

The logo for Melvyn Danes Estate Agents is a yellow oval with a green border. Inside the oval, the word "melvyn" is written in a small, lowercase, sans-serif font. Below it, the word "Danes" is written in a large, bold, green, sans-serif font. Underneath "Danes", the words "ESTATE AGENTS" are written in a smaller, uppercase, sans-serif font.

melvyn
Danes
ESTATE AGENTS

A photograph of a two-story brick house with a tiled roof and a large garden. The house has a patio area with outdoor furniture and several potted plants. The garden is well-maintained with a large lawn, a tall conical hedge, and various shrubs. The sky is clear and blue.

Lydon Court
Coventry Road
Offers Over £110,000

Description

A well presented, ground floor retirement apartment in a purpose built complex near to a wealth of amenities with NO ONWARD CHAIN.

Lydon Court is located just off the Coventry Road in Sheldon and has a good range of shops facilities and transport links on it's doorstep.

The complex is designed for over 60s or over 55s with a disability and there are many communal facilities such as a resident's lounge, laundry facilities and well maintained communal gardens.

This lovely apartment comprises a secure communal entrance, a private entrance hall, lounge, fitted kitchen, two bedrooms and a shower room.

Further benefiting from double glazing, electric heating, residents parking (not allocated) and extended lease.



Accommodation

Secure Communal Entrance

Private Entrance Hall

7'1 max x 13'2 max (2.16m max x 4.01m max)

Lounge/Diner

12'7 max x 20'3 max (3.84m max x 6.17m max)

Kitchen

9'3 x 6'9 (2.82m x 2.06m)

Bedroom One

9'9 max x 10' max (2.97m max x 3.05m max)

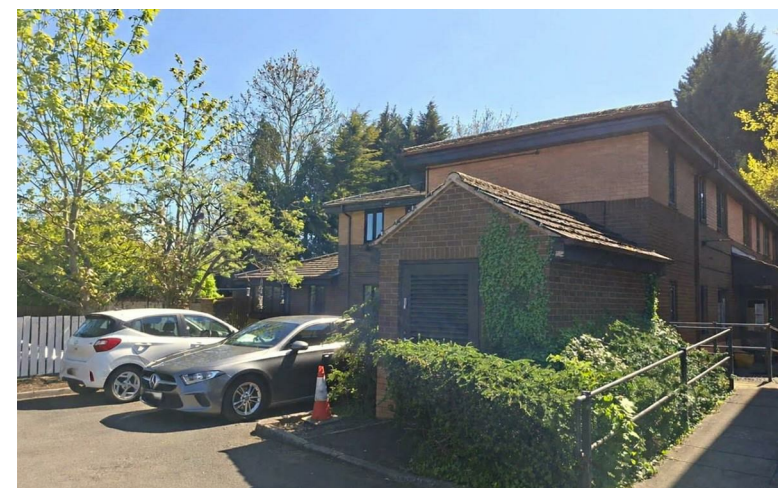
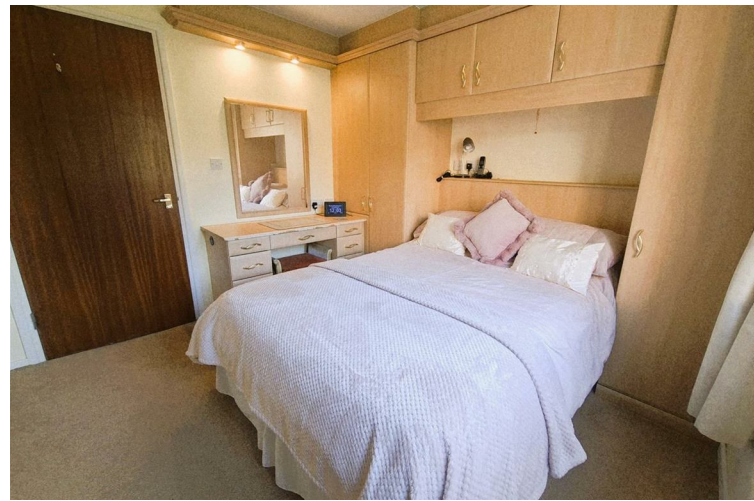
Bedroom Two

6'7 max x 11'0' max (2.01m max x 3.35m max)

Shower Room

7'8 x 5'5 (2.34m x 1.65m)

Communal Gardens



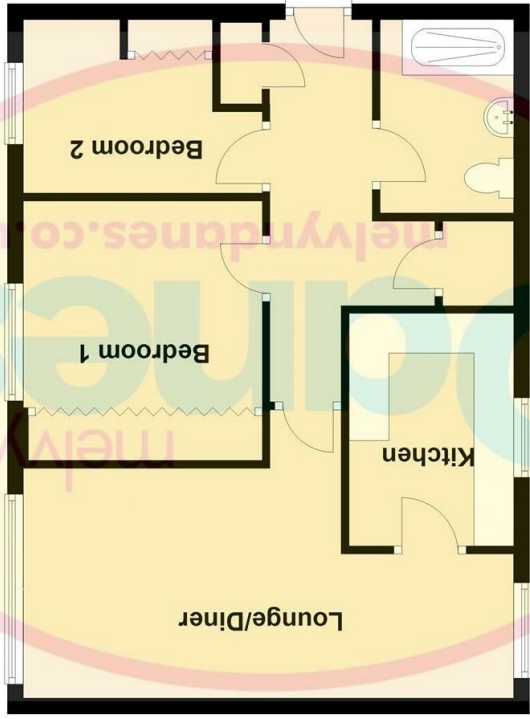
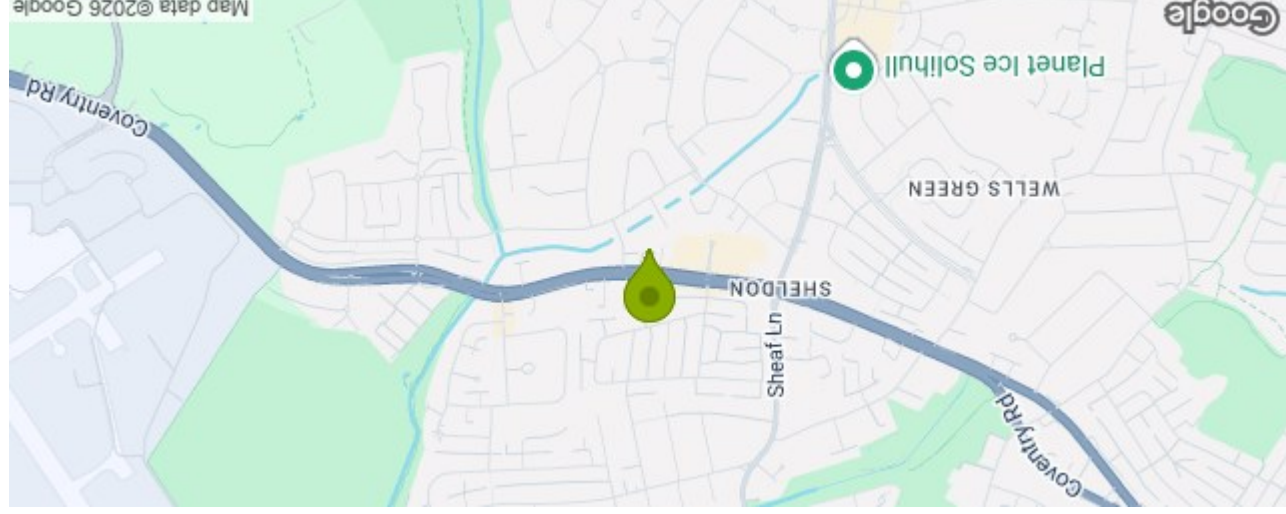
TENURE: We are advised that the property is LEASEHOLD.

These particulars are for general guidance only and are based on information supplied and approved by the seller. Complete accuracy cannot be guaranteed and may be subject to errors and/or omissions. They do not constitute representations of fact or form part of any offer or contract. Any Prospective Purchaser should obtain verification of all legal and factual matters and information from their Solicitor, Licensed Conveyancer or Surveyors as appropriate. The agent has not sought to verify the legal title of the property and the buyers must obtain verification from their solicitor. Photographs are provided for illustrative purposes only and the items shown in these are not necessarily included in the sale, unless specifically stated. The agent has not tested any apparatus, equipment, fixtures, fittings or services mentioned and do not by these Particulars or otherwise verify or warrant that they are in working order.

BROADBAND/MOBILE: Please refer to checker www.ofcom.gov.uk for broadband and mobile coverage at the property. From data taken on 27/4/2026 we understand that the standard broadband download speed at the property is around 16 Mbps, and the estimated fastest download speed currently achievable for the property post code area is around 1000 Mbps. Actual service availability or speeds received may be different and may vary depending on the time a speed test is carried out. Mobile coverage can vary depending on the network provider and other factors that can affect the local mobile reception and actual services available may be different depending on the particular circumstances, precise location and network outages.

MONEY LAUNDERING REGULATIONS: Under anti-money laundering legislation, we are obliged to confirm the identity of individuals and companies and the beneficial owners of organisations and trusts before accepting new instructions, and to review this from time to time. To avoid the need to request detailed identity information from vendors and intending purchasers, we may use approved external services which review publicly available information on companies and individuals. However, should those checks, for any reason, fail adequately to confirm identity, we may write to you to ask for identification evidence. If you do not provide satisfactory evidence or information within a reasonable time, we may have to stop acting for you and we would ask for your co-operation in order that there will be no delay in agreeing a sale. Any purchaser who has a provisional offer accepted via this company will be liable to pay an administration fee of £25 (incl VAT) for each person connected with the transaction to cover these checks. If we are instructed by a third party selling agent they may carry out their own AML checks and any prospective purchaser will be required to pay any additional costs involved – please speak to the office for confirmation.

REFERRAL FEES: We may refer you to recommended providers of ancillary services such as Conveyancing, Financial Services and Surveying. We may receive a commission payment fee or other benefit (known as a referral fee) for recommending their services. You are not under any obligation to use the services of the recommended provider.



Approx. 52.6 sq. metres (566.1 sq. feet)

Total area: approx. 52.6 sq. metres (566.1 sq. feet)

Lydon Court Coventry Road Sheldon B26 3PG Council Tax Band: B

Energy Efficiency Rating	
Potential	77
Current	54

England & Wales	
EU Directive 2002/91/EC	
Very energy efficient - lower running costs	(92 plus) A
(81-91) B	
(69-80) C	
(55-68) D	
(39-54) E	
(21-38) F	
(1-20) G	
Not energy efficient - higher running costs	

Please note that all measurements and floor plans are approximate and quoted for general guidance only and whilst every attempt has been made to ensure accuracy, they must not be relied on and do not form part of any contract.