



ACTON LANE, W4

£649,950

Views of Acton Green

Two bedrooms

Open-plan

Great condition

Transport links

Energy rating: e

@marshandparsons
marshandparsons.co.uk

MARSH &
PARSONS



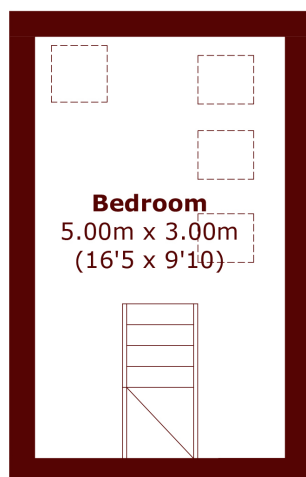
ABOUT THE PROPERTY

This split-level apartment is within a period converted Victorian house and is in good condition throughout. On the second floor the apartment has a large open-plan kitchen and reception room with views over Acton Green, a double bedroom that has a Juliet balcony and a family bathroom. The third floor/mezzanine comprises a further bedroom/sleeping area. There is an abundance of storage throughout the apartment.

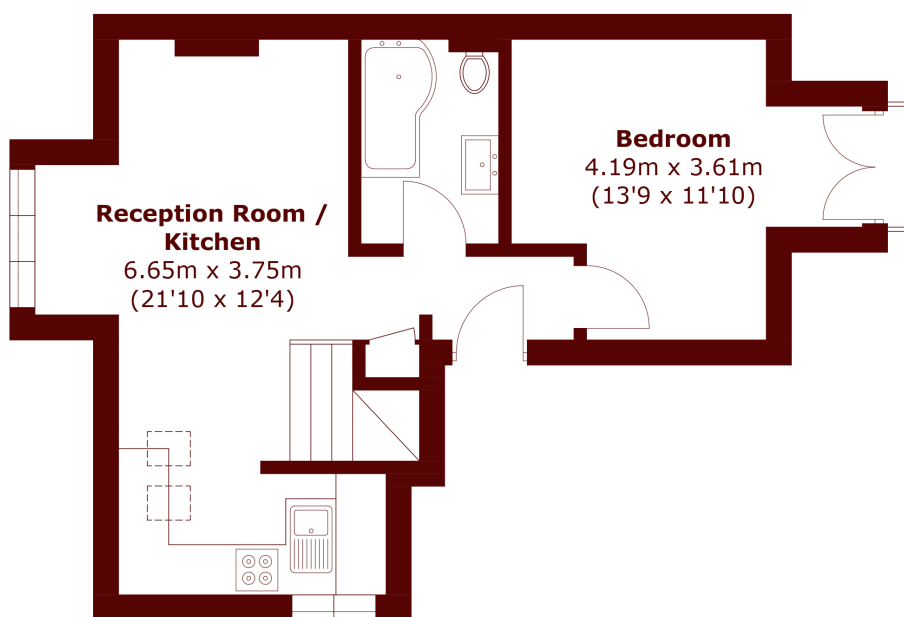
Acton Lane is moments from the wide array of shops and restaurants Chiswick has to offer. There are also excellent transport links with Chiswick Park and Turnham Green train stations close by.



STEP INSIDE ACTON LANE



Third Floor



Second Floor

Total area (approx.): 57.1 sq. m (614.6 sq. ft)

Chiswick
020 8994 2556

Energy Rating: E We aim to make our particulars both accurate and reliable. However, they are not guaranteed; nor do they form part of an offer or contract. If you require clarification on any points then please contact us, especially if you're traveling some distance to view. Please note that appliances and heating systems have not been tested and therefore no warranties can be given as to their good working order

MARSH &
PARSONS