



Atfield Grove, Windlesham

**£675,000**





## Atfield Grove, Windlesham, Surrey GU20 6DP

This attractive Georgian style four bedroom link detached home in a cul-de-sac position is a short walk of the village and Field of Remembrance playing fields.

### FEATURES

- Approximately 1183 sq. ft including garage
- Link detached
- Short walk to village amenities
- Tall Georgian style windows to front
- Modern fitted kitchen
- Herringbone flooring to sitting room
- Gas central heating
- Double glazing

### ACCOMMODATION

- Entrance hall
- Downstairs cloakroom
- Sitting room
- Open plan kitchen/dining room
- Sun room
- Four bedrooms
- Two bath/shower rooms

### OUTSIDE

- Front garden
- Driveway parking
- Garage
- South east facing rear garden with patio

### LOCAL AUTHORITY/COUNCIL TAX

Surrey Heath – Band E

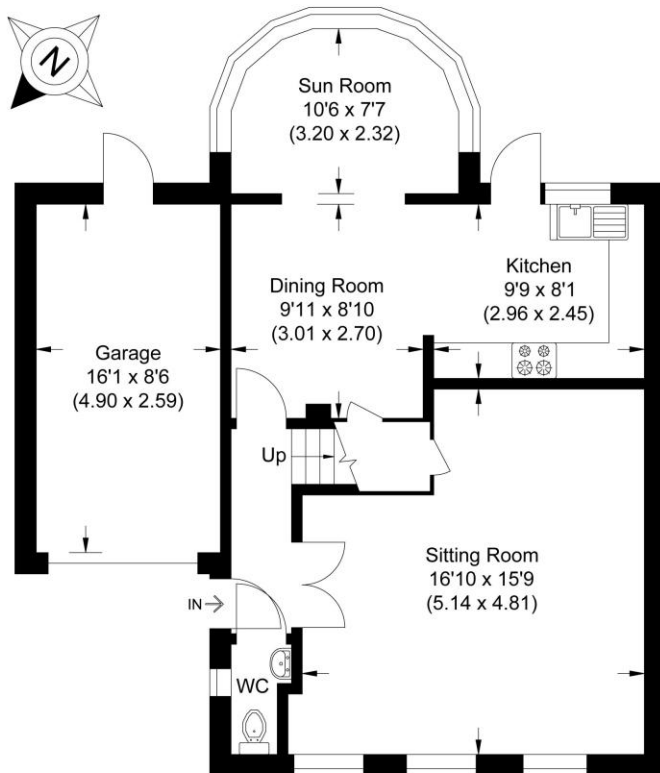
### EPC RATING

D



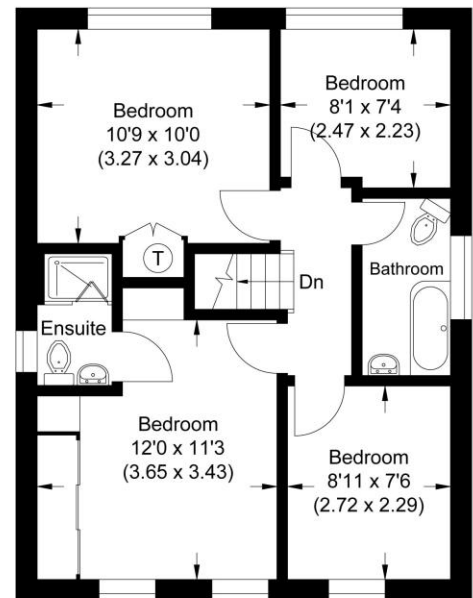






Ground Floor

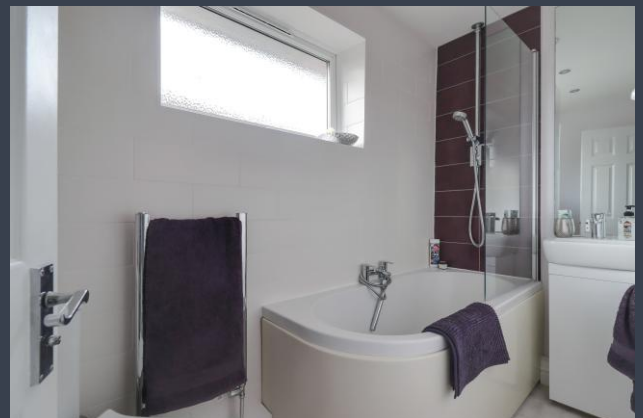
Approximate Gross Internal Area  
97.30 sq m / 1047.32 sq ft  
(Excludes Garage)  
Garage Area 12.70 sq m / 136.70 sq ft



First Floor

Illustration for identification purposes only, measurements are approximate, not to scale.

**Disclaimer:** We wish to inform prospective purchasers that we have prepared these sales particulars as a general guide. We have not carried out a detailed survey, nor tested the services, appliances and specific fittings. Room sizes are approximate and rounded: they are taken between internal wall surfaces and therefore include cupboards / shelves, etc. Accordingly, they should not be relied upon for carpeting, curtains / blinds.



**NEWTON ROWE**  
SALES & LETTINGS

The Old Dairy, 7 Updown Hill, Windlesham, Surrey GU20 6AF  
enquiries@newtonrowe.co.uk | 01276 986900