

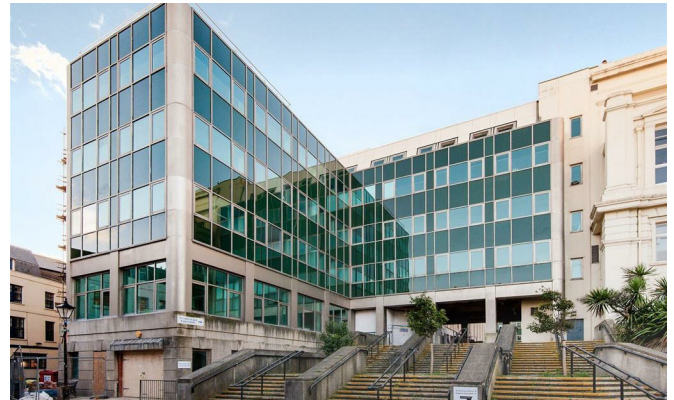


Bartholomew Square

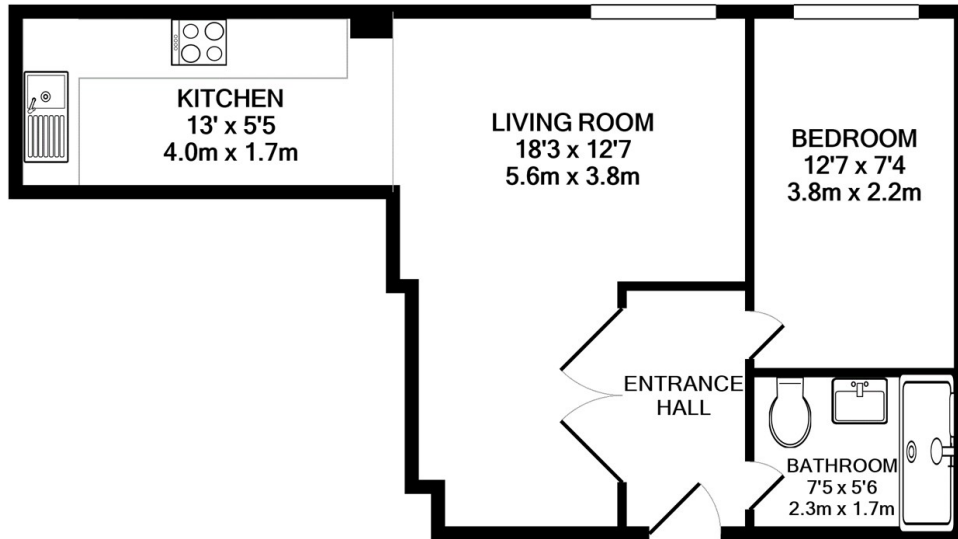
, Brighton BN1 1JS

- *****AVAILABLE SEPTEMBER*****
 - Double Bedroom
- First Floor (with Lift access)
- Central Brighton Location
 - Students Welcome
- Spacious Open Plan Living Area
 - Integrated Kitchen Appliances
 - Underfloor Heating
- Excellent Transport Links & Local Amenities
 - Pet Friendly

£1,500 PCM



Local Authority Brighton &
Hove City Council
Council Tax Band B
EPC Rating C



TOTAL APPROX. FLOOR AREA 441 SQ.FT. (41.0 SQ.M.)

Whilst every attempt has been made to ensure the accuracy of the floor plan contained here, measurements of doors, windows, rooms and any other items are approximate and no responsibility is taken for any error, omission, or mis-statement. This plan is for illustrative purposes only and should be used as such by any prospective purchaser. The services, systems and appliances shown have not been tested and no guarantee as to their operability or efficiency can be given

Made with Metropix ©2020



Moretons Lettings Office
30-31 North Street, Brighton,
East Sussex, BN1 1EB

Contact

Agents Note: Whilst every care has been taken to prepare these particulars, they are for guidance purposes only. All measurements are approximate and for general guidance purposes only and whilst every care has been taken to ensure accuracy, they should not be relied upon and potential buyers/tenants are advised to recheck the measurements.