






MAITLAND COURT, LANCASTER TERRACE

Notting Hill W2



PRIME LATERAL LIVING ADJACENT TO HYDE PARK

Maitland Court is perfectly positioned on Lancaster Terrace, situated directly opposite the entrance to the vast green open spaces of Hyde Park.

			EPC
2	1	1	C

Local Authority: City of Westminster

Council Tax band: F

Tenure: Share of Freehold with approximately 980 years remaining

Service charge: £6,893.44 per annum reviewed every year, next review due 2027

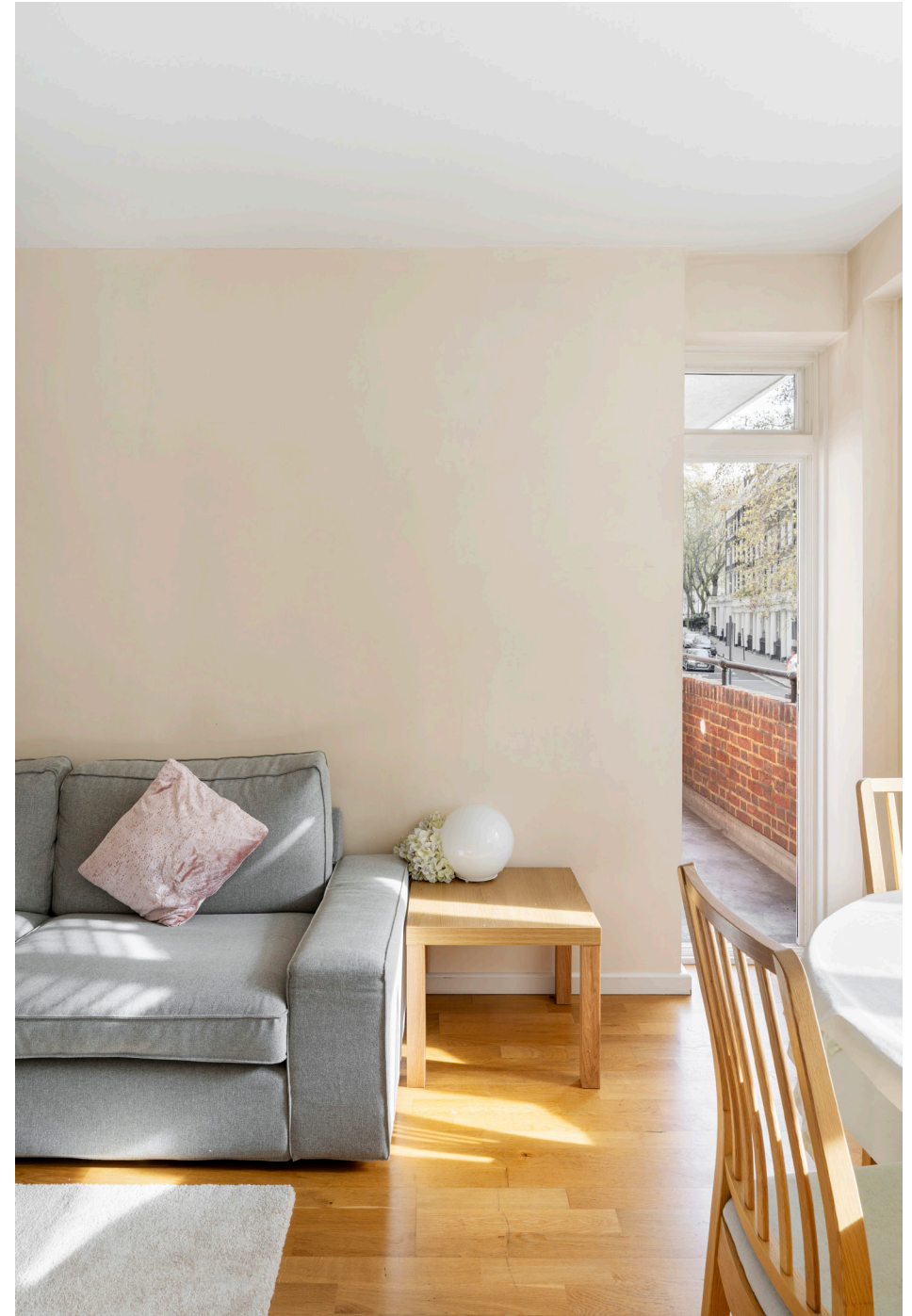
Guide Price: £750,000



SET ON THE FIRST FLOOR OF A HIGHLY REGARDED, PURPOSE BUILT MANSION BLOCK, THIS TWO BEDROOM APARTMENT OFFERS EXCEPTIONAL LATERAL LIVING SPACE.

The accommodation is comprised of a bright reception room featuring a private balcony, a separate fully fitted kitchen, a principal bedroom with integrated wardrobes, a second double bedroom, and a modern shower room. The residence is further enhanced by the inclusion of a Chimni digital logbook, while the building itself provides passenger lift access and an exemplary security service maintained by a dedicated 24 hour portage team. The property is placed for the world class transport links of Paddington Station and is just moments from Lancaster Gate station, offering effortless access to the West End and the City.

We have been informed of some fire safety matters that applicants should be aware of when considering this property. Further information will be provided.

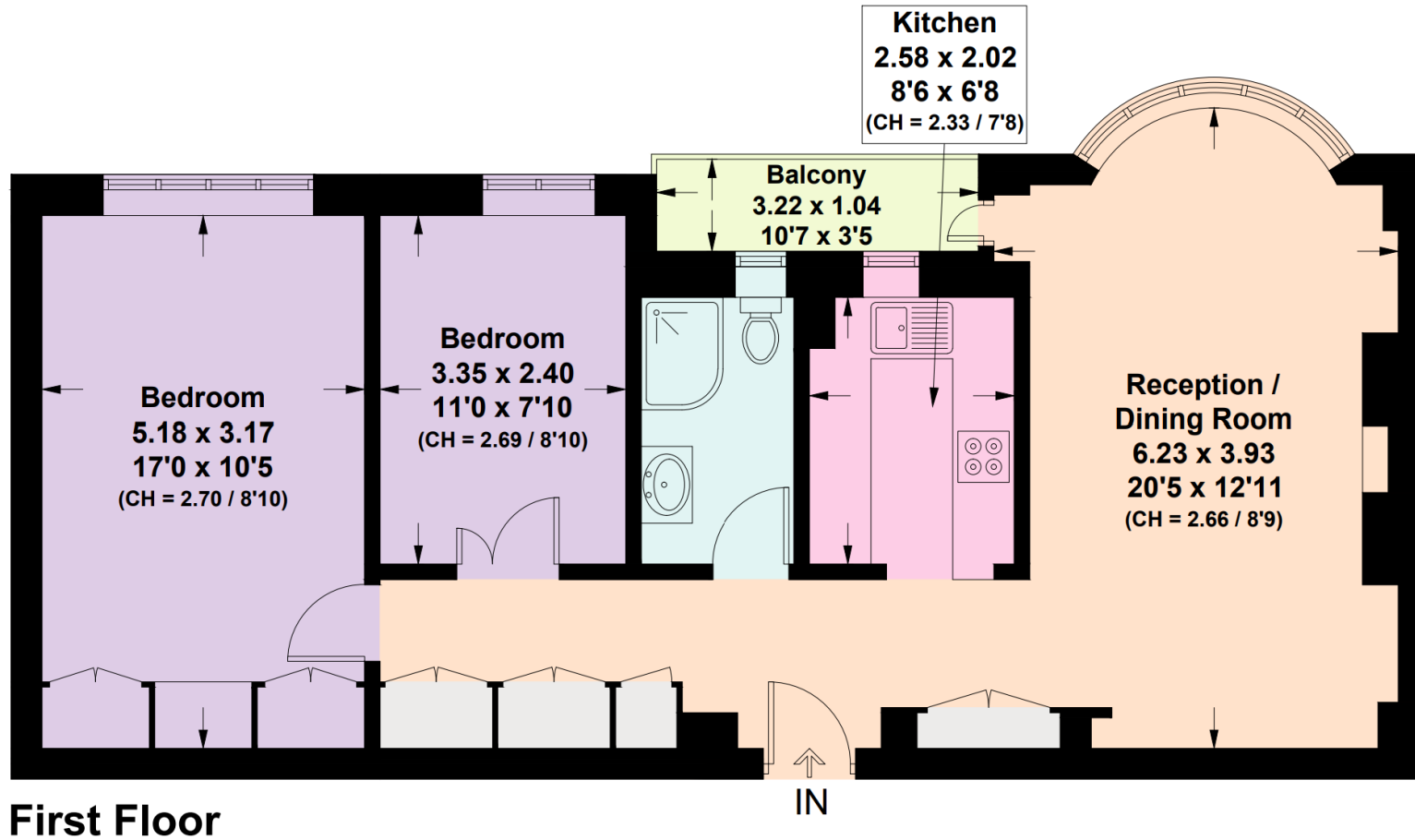






Maitland Court, W2

Approximate Gross Internal Area = 70.1 sq m / 754 sq ft
Including Limited Use Area (1.5 sq m / 16 sq ft)



This plan is for layout guidance only. Not drawn to scale unless stated. Windows and door openings are approximate. Whilst every care is taken in the preparation of this plan, please check all dimensions, shapes and compass bearings before making any decisions reliant upon them. (ID1291251)

Approximate Gross Internal Area = 70.1 sq m / 754 sq ft

This plan is for layout guidance only. Not drawn to scale unless stated. Windows and door openings are approximate. Whilst every care is taken in the preparation of this plan, please check all dimensions, shapes and compass bearings before making any decisions reliant upon them. (ID767266)

We would be delighted
to tell you more.

Jack Thomas
jack.thomas@knightfrank.com

+44 2039109732

Notting Hill Sales
294 Westbourne Grove
W11 2PS

[knightfrank.co.uk](https://www.knightfrank.co.uk)

Your partners in property

1. Particulars: These particulars are not an offer or contract, nor part of one. You should not rely on statements given by Knight Frank in the particulars, by word of mouth or in writing ("information") as being factually accurate about the property, its condition or its value. Neither Knight Frank nor any joint agent has any authority to make any representations about the property, and accordingly any information given is entirely without responsibility on the part of Knight Frank. 2. Material Information: Please note that the material information is provided to Knight Frank by third parties and is provided here as a guide only. While Knight Frank has taken steps to verify this information, we advise you to confirm the details of any such material information prior to any offer being submitted. If we are informed of changes to this information by the seller or another third party, we will use reasonable endeavours to update this as soon as practical. 3. Photos, Videos etc: The photographs, property videos and virtual viewings etc. show only certain parts of the property as they appeared at the time they were taken. Areas, measurements and distances given are approximate only. 4. Regulations etc: Any reference to alterations to, or use of, any part of the property does not mean that any necessary planning, building regulations or other consent has been obtained. A buyer must find out by inspection or in other ways that these matters have been properly dealt with and that all information is correct. 5. Fixtures and fittings: A list of the fitted carpets, curtains, light fittings and other items fixed to the property which are included in the sale (or may be available by separate negotiation) will be provided by the Seller's Solicitors. 6. VAT: The VAT position relating to the property may change without notice. 7. To find out how we process Personal Data, please refer to our Group Privacy Statement and other notices at <https://www.knightfrank.com/legals/privacy-statement>.

Particulars dated May 2026. Photographs and videos dated May 2026. All information is correct at the time of going to print. Knight Frank is the trading name of Knight Frank LLP. Knight Frank LLP is a limited liability partnership registered in England and Wales with registered number OC305934. Our registered office is at 55 Baker Street, London W1U 8AN. We use the term 'partner' to refer to a member of Knight Frank LLP, or an employee or consultant. A list of members names of Knight Frank LLP may be inspected at our registered office. If you do not want us to contact you further about our services then please contact us by either calling 020 3544 0692, email to marketing.help@knightfrank.com or post to our UK Residential Marketing Manager at our registered office (above) providing your name and address.