



Dinerman Court

38-42 Boundary Road, NW8

Asking Price £385,000

Sole Agent. A bright one double bedroom flat on the 2nd floor of this purpose-built block on Boundary Road.

The apartment consists of an 18ft reception room, separate kitchen and double bedroom and further benefits from first come first served parking, a Share of Freehold, a resident caretaker and very well-kept communal gardens.

Dinerman Court is ideally located for both Swiss Cottage (0.3 miles) St John's Wood (0.4 miles) Underground stations (Jubilee line) as well as South Hampstead Overground station.

CHESTERTONS



Dinerman Court

38-42 Boundary Road, NW8

- One Bedroom Apartment
- Share of Freehold
- 534 sq. ft.
- Good Condition
- Lift
- Communal Garden



Tenure: Share of Freehold
Service Charge: £3,245.60pa
Ground Rent: £0
Local Authority: Camden
Council Tax Band: C

Score	Energy rating	Current	Potential
92+	A		
81-91	B		86 B
69-80	C	71 C	
55-68	D		
39-54	E		
21-38	F		
1-20	G		

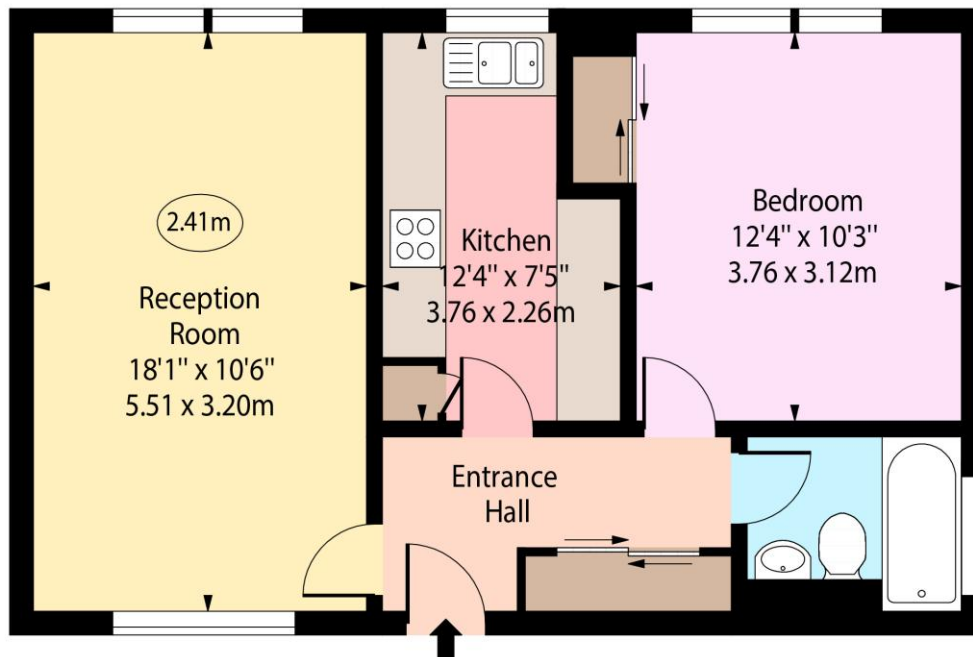
Chestertons St John's Wood Sales

105 St. John's Wood Terrace
London
NW8 6PL
stjohnswood@chestertons.co.uk
020 3040 8611
chestertons.co.uk

Dinerman Court,
Boundary Road,
St John's Wood, NW8



○ - Ceiling Height



Second Floor

Approx Gross Internal Area 534 Sq Ft - 49.61 Sq M

Every attempt has been made to ensure the accuracy of the floor plan shown. However, all measurements, fixtures, fittings, and data shown are approximate interpretations and for illustrative purposes only.

Measured according to the RICS IPMS 2. Not To Scale.

www.goldlens.co.uk

Produced for Chestertons

Ref. No. 028240E