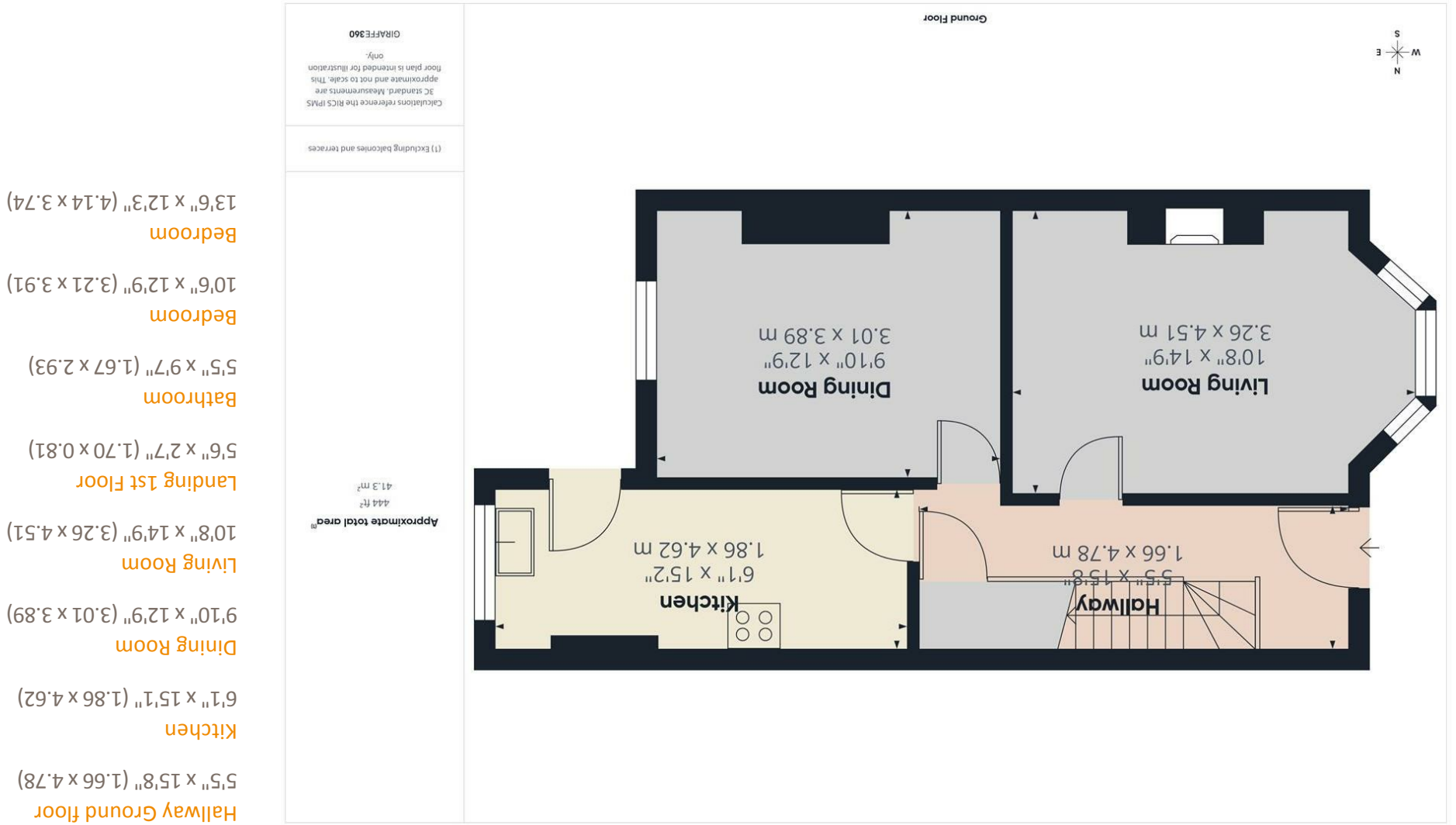


Consumer Protection from Unfair Trading Regulations 2008 We have not tested any apparatus, equipment, fittings or services and so cannot verify that they are in working order or fit for purpose. You are advised to obtain verification from your solicitor or surveyor. References to the tenure of a property are based on information supplied by the seller. We have not had sight of the title documents and a buyer is advised to obtain verification from their solicitor. Items shown in photographs are not included unless specifically mentioned within the sales particulars, but may be available by separate negotiation. We advise you to book an appointment to view before embarking on any journey to see a property, and check its availability.



- Lounge
- Dining room
- Kitchen
- Two bedrooms
- Modern bathroom
- Courtyard garden

15 Congleton Road, St George, BRISTOL, BS5 7AP  
**£1,475 PCM**

PROPERTY TYPE House - Terraced

BEDROOMS 2

RECEPTION ROOMS 2

BATHROOMS 1

EPC RATING D

COUNCIL TAX BAND B



Coming to the market for rent is this two-bedroom Victorian house. On the ground floor you will find a Modern kitchen, dining room and separate living room, all with hard wooden floors. Upstairs comprises of a family bathroom and two decent sized bedrooms.

The property further benefits from a private courtyard.

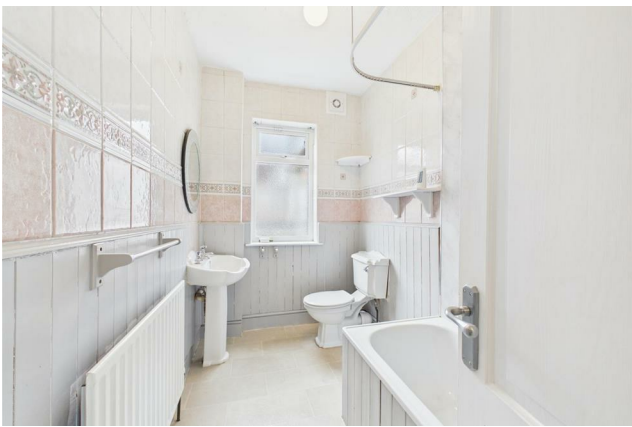
Available now. EPC D. Council tax band B.

Viewing advised.



## the location

This property is situated close to St Georges park, therefore offering good access to the Bristol City Centre.



## what the owners will miss

just a thought...