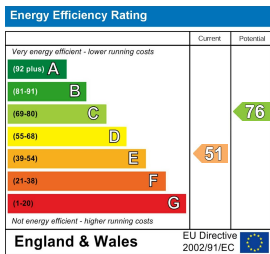


- Beautiful two bedroom cottage
- Many original features and beams
- Good size living room
- Two double bedrooms
- Kitchen with breakfast bar
- Spacious bathroom
- Gas Central Heating
- Large South facing garden
- Walking distance of local amenities
- Close to Marks Tey Train Station



GREENWOOD
PROPERTY CONSULTANTS

London Road
Colchester, CO6 1LH

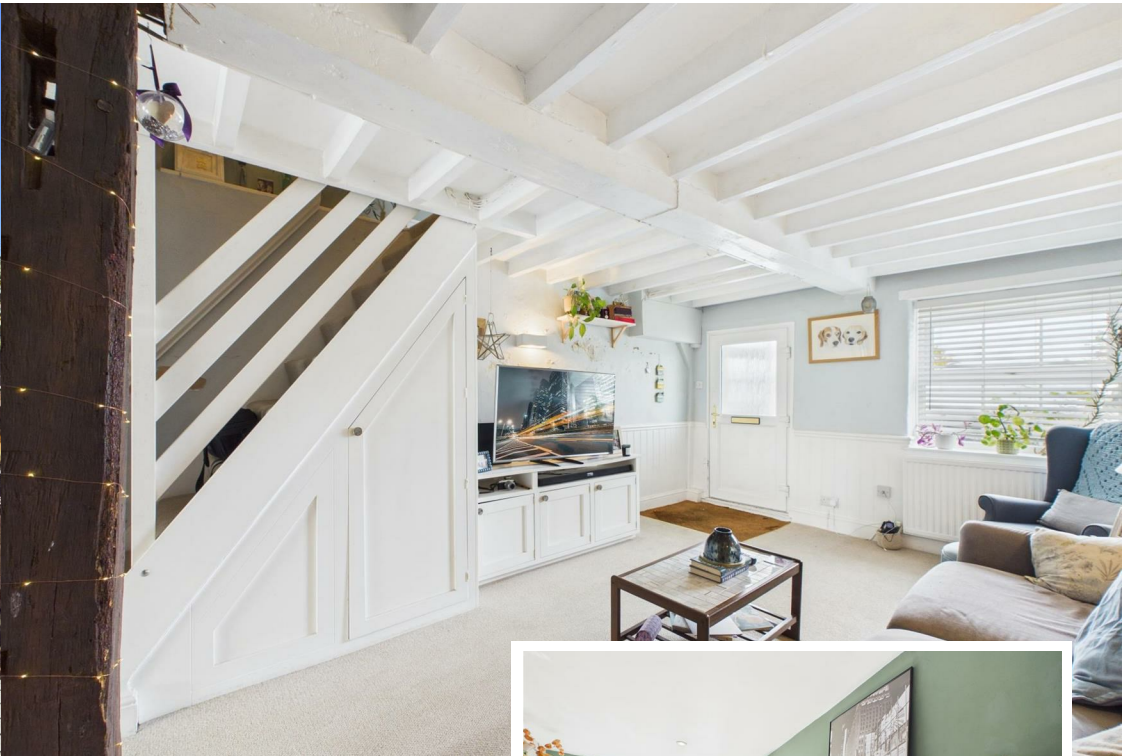
£1,300 PCM
£1,500: Deposit
1st May 2026: Available Date



87 Crouch Street
Colchester
Essex
CO3 3EZ

<http://www.greenwoodpc.co.uk>
info@greenwoodpc.co.uk
01206 616820

Agents Note: Whilst every care has been taken to prepare these particulars, they are for guidance purposes only. All measurements are approximate and are for general guidance purposes only and whilst every care has been taken to ensure their accuracy, they should not be relied upon and potential buyers/tenants are advised to recheck the measurements



Property Description

Nestled on London Road in the charming village of Copford, Colchester, this delightful property offers a unique blend of historical charm and modern comfort. Built in 1800, the home boasts many original features, including beautiful beams that add character and warmth to the living spaces.

Upon entering, you are welcomed into a good-sized living room, complete with a feature fireplace that serves as a perfect focal point for cosy evenings. The room is bathed in natural light, creating an inviting atmosphere for both relaxation and entertaining.

The property comprises two well-proportioned bedrooms, providing ample space for rest and privacy. The bathroom is thoughtfully

designed, ensuring convenience for daily routines. Throughout the home, you will find it in very good order, ready for you to move in without the need for immediate renovations.

One of the standout features of this property is the generous south-facing garden, which offers a lovely outdoor space for gardening, relaxation, or enjoying sunny days with family and friends.

Additionally, the location is highly convenient, being close to Marks Tey Train Station, which provides excellent transport links for commuting or exploring the wider area.

This charming home is perfect for those seeking a blend of historical elegance and modern living in a peaceful village setting. Don't miss the opportunity to make this delightful property your own.

