



## 14 Park Grove

, Portsmouth, PO6 2PH

**Guide price £375,000**

This beautifully presented three bedroom, three reception room, end of terrace home with garage and parking has been thoughtfully improved by the current owners to create a stylish and characterful family home.

- Three Bedroom, End of Terrace Home
- South Facing, Landscaped Garden
- Detached Garage & Driveway
- Attic Room with Velux Window & Potential Loft Conversion (STPP)
- Open Fireplace & Period Features
- Downstairs W.C. with Upstairs Family Bathroom
- Beautifully Presented Throughout
- Three Reception Rooms

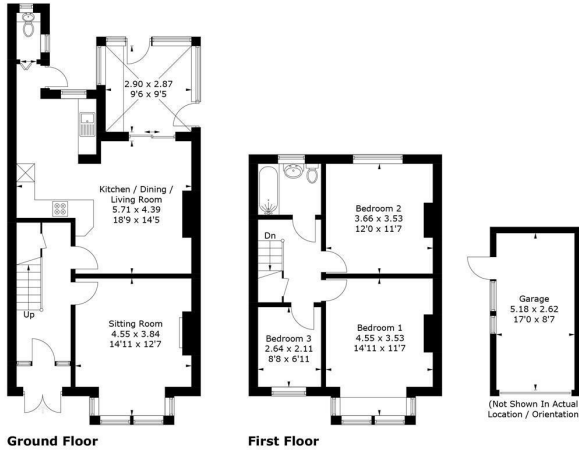
Please contact our ROK Marsh Office on 02393233267 if you wish to arrange a viewing appointment for this property or require further information.



# Floor Plan

## Park Grove, Portsmouth, PO6

Approximate Gross Internal Area = 110.3 sq m / 1187 sq ft  
 Garage = 13.5 sq m / 145 sq ft  
 Total = 123.8 sq m / 1332 sq ft



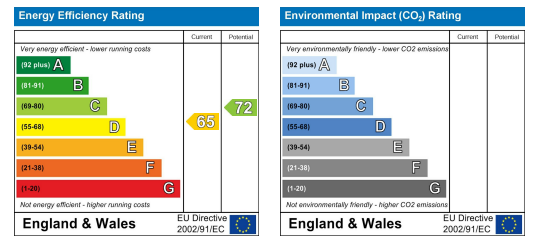
PRODUCED FOR ROK MARSH

Whilst every attempt has been made to ensure the accuracy of the floorplan, measurements of doors, windows and rooms are approximate. These plans are for representation purposes only as defined by RICS Code of Measuring Practice and used as such by any prospective purchaser. (ID1306135)

# Area Map



# Energy Efficiency Graph



These particulars, whilst believed to be accurate are set out as a general outline only for guidance and do not constitute any part of an offer or contract. Intending purchasers should not rely on them as statements of representation of fact, but must satisfy themselves by inspection or otherwise as to their accuracy. No person in this firm's employment has the authority to make or give any representation or warranty in respect of the property.