



CHATTERTON | REES



Glendale Beech Hill Road, Ascot, SL5 0BW  
Guide price £875,000





# Glendale Beech Hill Road

Ascot, SL5 0BW

- Four Bedrooms
- Kitchen/Diner
- Driveway Parking
- Potential to Extend
- Detached
- Garage
- Utility
- Charters Catchment

A beautifully refurbished four-bedroom detached family home, ideally positioned within easy reach of Sunningdale train station, local shops, and excellent amenities.

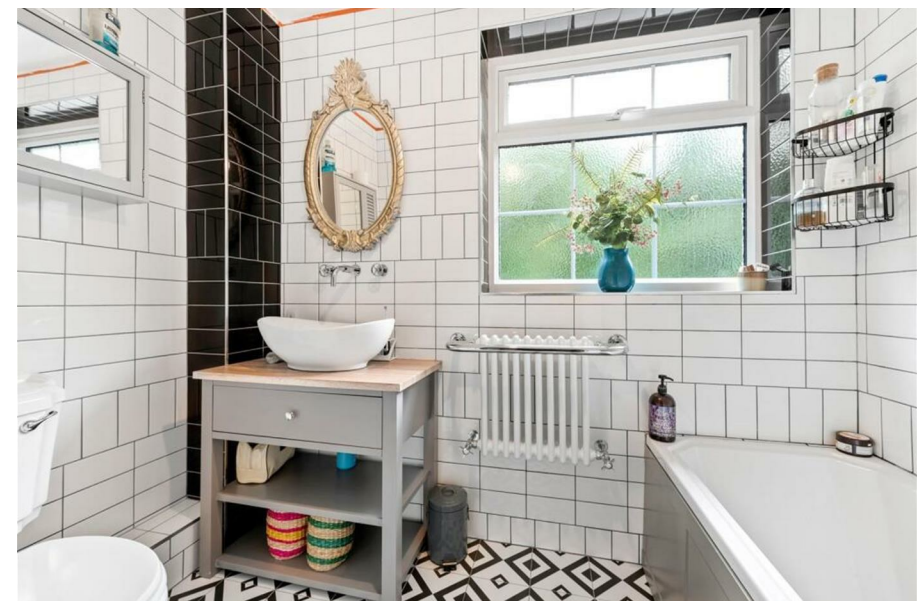
This stylish home offers well-balanced and versatile living accommodation, perfect for modern family life. The ground floor features a contemporary kitchen with a central island, flowing seamlessly into the open-plan living and dining space, where bi-fold doors open onto the rear garden and create an ideal setting for both entertaining and everyday living. There is also a spacious separate reception room with bespoke built-in storage, along with a practical utility room and downstairs cloakroom.

On the first floor, the property offers four well-proportioned bedrooms, two of which benefit from built-in wardrobes, all served by a modern family bathroom.

Outside, the property enjoys driveway parking, access to the garage, a rear garden ideal for families and outdoor entertaining, and an attractive lawned frontage.

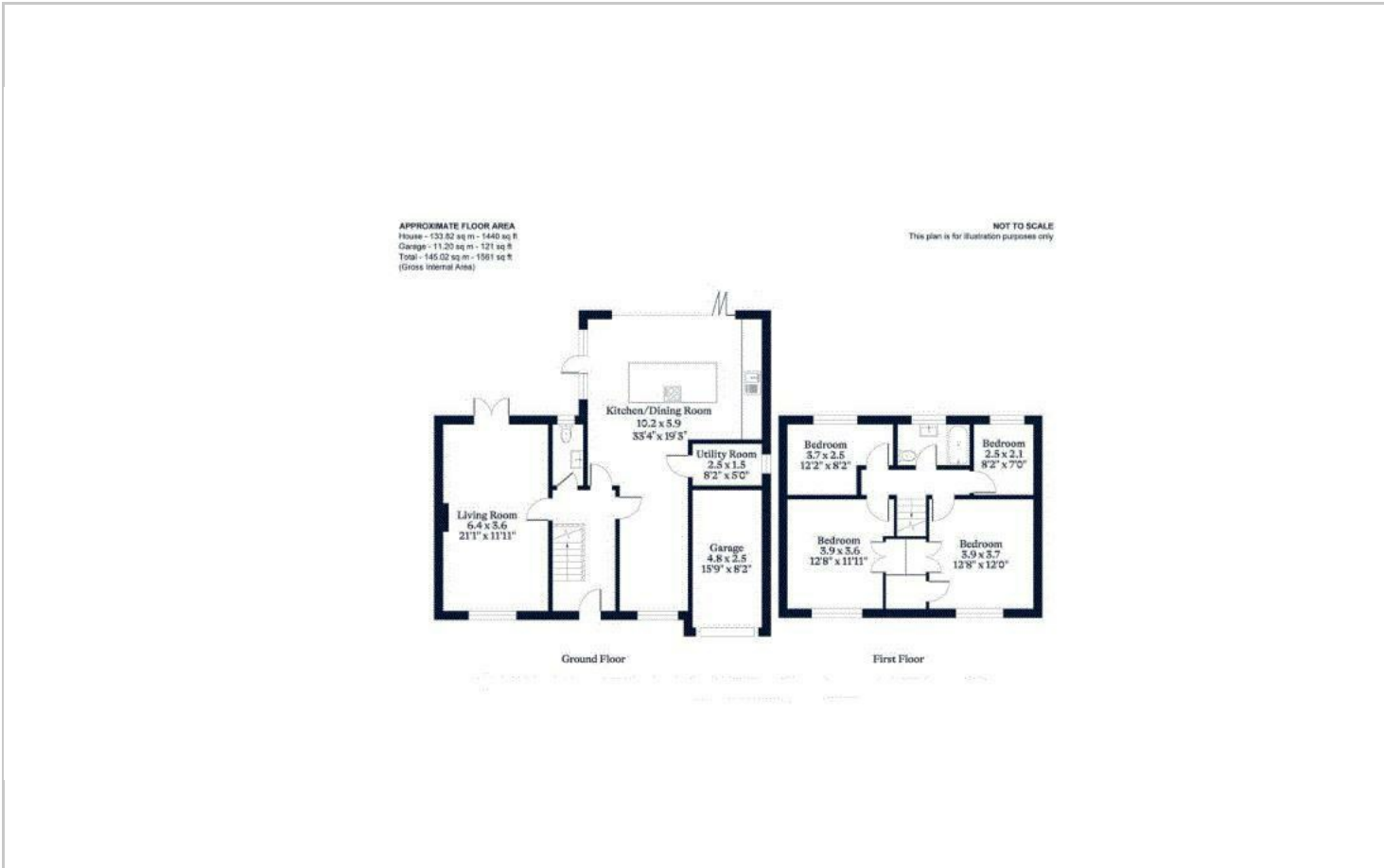
Guide price £875,000



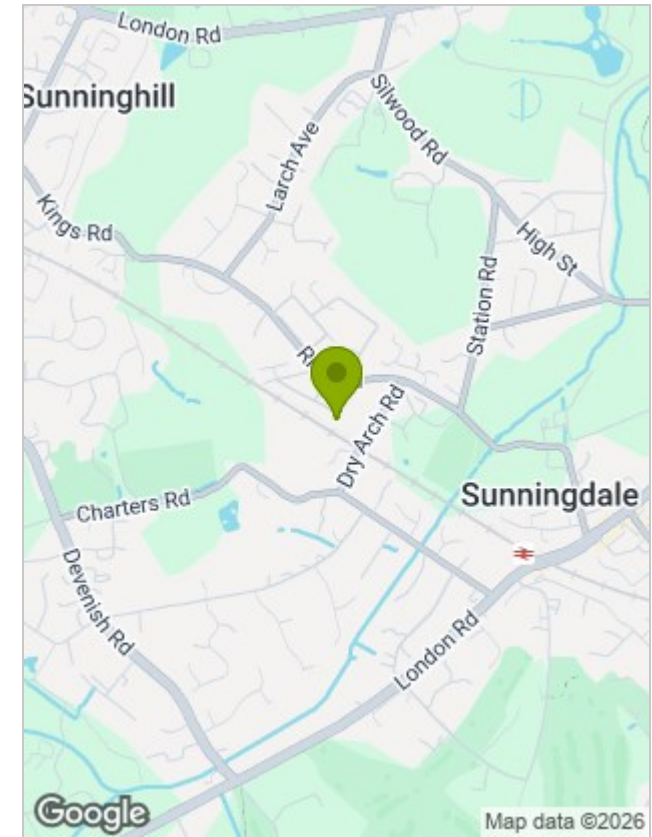




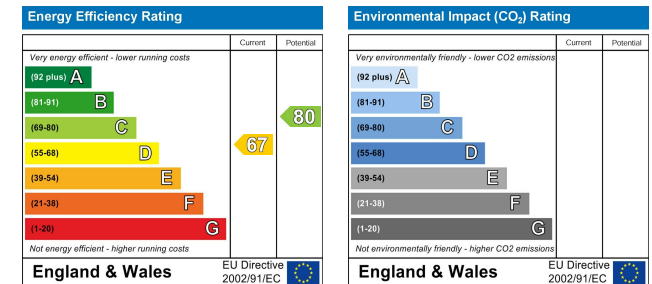
## Floor Plans



## Location Map



## Energy Performance Graph



## Viewing

Please contact our Sunningdale Country Homes Office on 020 3780 0580 if you wish to arrange a viewing appointment for this property or require further information.

The particulars are set out as a general outline only for the guidance of intended purchasers or lessees, and do not constitute, any part of a contract. Nothing in these particulars shall be deemed to be a statement that the property is in good structural condition or otherwise nor that any of the services, appliances, equipment or facilities are in good working order. Purchasers should satisfy themselves of this prior to purchasing.