



Headland Avenue

Elkesley, Retford, DN22 8AH

£140,000

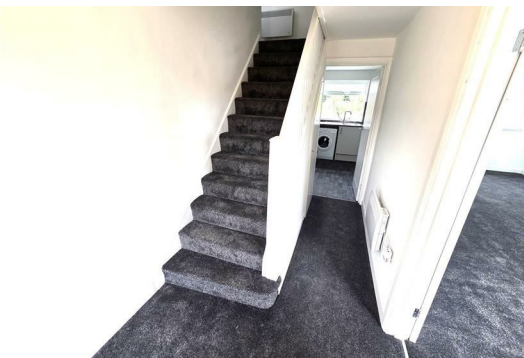


Located in the village of Elkesley, close to local amenities and schools with the market town of Retford also within easy reach, offering a variety of shops, restaurants, and transport links.

This four bedroom semi detached house has undergone an extensive refurbishment throughout to a high standard.

The ground floor features a large living room / dining room, kitchen and a welcoming hallway with understairs storage. Upstairs, there are three generous double bedrooms, a single bedroom and a bathroom.

Externally, the property boasts a substantial front garden with parking for up to three cars and a large rear garden with outside storage.



Description

Don't miss this newly renovated family home to let in Elkesley. Move in and pop your feet up! Briefly comprising of an entrance hall, lounge / diner, kitchen, bathroom and four bedrooms. Externally there is amply of parking to the front, out buildings and garden to the rear.

Call now not to miss this gem!

Entrance Hallway

The property is entered through the brand new front upvc door into the carpet hallway with the open plan stairs leading to the first floor, electric panel radiator and under stairs storage cupboard.

Lounge/Diner 22'9" x 11'7" (6.94m x 3.54m)

The lounge / dining room can be entered from the hallway or from the kitchen and has dual aspect windows allowing the natural light to flood within. A fire place with a tiled hearth and space for an electric fire is a focal point to the centre of the room. With new carpets and two wall mounted modern electric fan heaters.

Kitchen 10'1" x 8'10" (3.08m x 2.70m)

The kitchen has a range of high gloss white soft closing wall and base units with all new appliances; an electric induction four ring hob, fan assisted oven, chimney style extractor above, integrated fridge / freezer and a free standing washing machine with black speckled worktops. Part tiled walls and vinyl flooring and recess lighting. A side upvc door leads into the rear garden where an utility room can be accessed.

Landing

A fully carpentered, split level landing with white spindle staircase, window and panel radiator leading to all the bedrooms and family bathroom.

Bedroom One 12'5" x 10'5" (3.81m x 3.18m)

The master bedroom is a double room with a carpet, panel radiator, built in wardrobes and a front facing window.

Bedroom Two 11'6" x 9'11" (3.52m x 3.04m)

Bedroom two is a double room with a carpet, panel radiator, cupboard which houses the boiler and a rear facing window.

Bedroom Three 12'1" x 9'2" (3.69m x 2.81m)

Bedroom three is a double room with a carpet, panel radiator and a front facing window.

Bedroom Four 9'5" x 7'2" (2.88m x 2.20m)

Bedroom four is a single bedroom or study/office space with a carpet, radiator and front facing window.

Bathroom 6'11" x 6'10" (2.12m x 2.10m)

The modern bathroom comprises of a white three piece suite; bath with an electric shower over, glass shower screen, w/c and hand basin with part aqua board walls and Herringbone style vinyl flooring with a chrome ladder towel rail recess lighting and extractor.

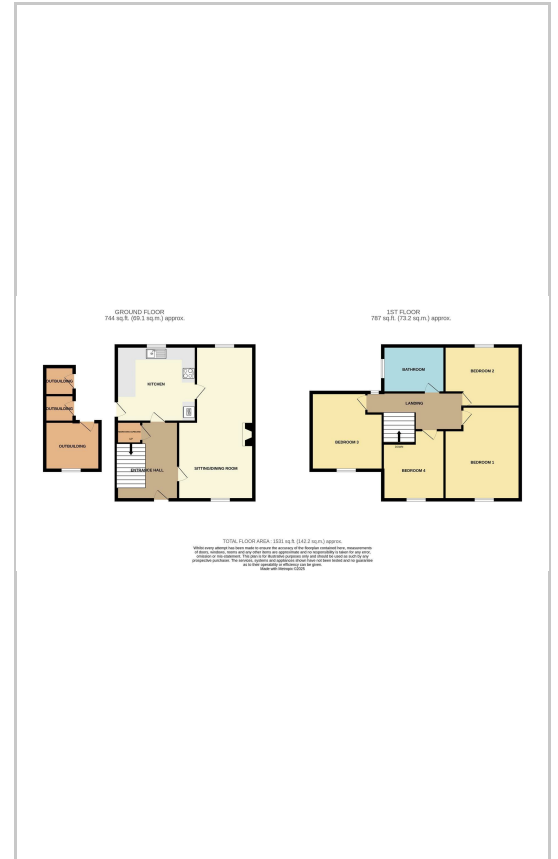
Disclaimer

1. MONEY LAUNDERING REGULATIONS: Intending purchasers will be asked to produce identification documentation at a later stage and we would ask for your co-operation in order that there will be no delay in agreeing the sale.
2. General: While we endeavour to make our sales particulars fair, accurate and reliable, they are only a general guide to the property and, accordingly, if there is any point which is of particular importance to you, please contact the office and we will be pleased to check the position for you, especially if you are contemplating travelling some distance to view the property.
3. Measurements: These approximate room sizes are only intended as general guidance. You must verify the dimensions carefully before ordering carpets or any built-in furniture.
4. Services: Please note we have not tested the services or any of the equipment or appliances in this property, accordingly we strongly advise prospective buyers to commission their own survey or service reports before finalising their offer to purchase.
5. THESE PARTICULARS ARE ISSUED IN GOOD FAITH BUT DO NOT CONSTITUTE REPRESENTATIONS OF FACT OR FORM PART OF ANY OFFER OR CONTRACT. THE MATTERS REFERRED TO IN THESE PARTICULARS SHOULD BE INDEPENDENTLY VERIFIED BY PROSPECTIVE BUYERS OR TENANTS. NEITHER Clark Estates OR ANY OF ITS EMPLOYEES OR AGENTS HAS ANY AUTHORITY TO MAKE OR GIVE ANY REPRESENTATION OR WARRANTY WHATSOEVER IN RELATION TO THIS PROPERTY.

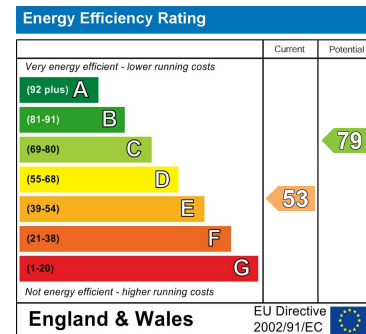
Area Map



Floor Plans



Energy Efficiency Graph



These particulars, whilst believed to be accurate are set out as a general outline only for guidance and do not constitute any part of an offer or contract. Intending purchasers should not rely on them as statements of representation of fact, but must satisfy themselves by inspection or otherwise as to their accuracy. No person in this firm's employment has the authority to make or give any representation or warranty in respect of the property.

14-16 Eldon Street, Tuxford, NG22 0LH

Tel: 01777 801 901 Email: dawn@clark-estates.co.uk www.clark-estates.co.uk