



**Connells**

Jubilee Street  
Sittingbourne



### Property Description

Connells are pleased to bring to the market this well-maintained two-bedroom first-floor apartment, ideally situated just a short walk from Sittingbourne town centre and mainline train station.

The apartment has been tastefully maintained by the current owners meaning the lucky buyer could literally move straight in. The accommodation comprises a spacious open-plan living and kitchen area, which opens on to a generously sized balcony - perfect for relaxing. Both bedrooms are well-proportioned doubles, with the main bedroom having an en-suite. There is also a modern family bathroom and a large, useful airing cupboard providing additional storage.

The apartment is located on Jubilee Street, a popular and convenient area within Sittingbourne. The town centre, train station, shops and a supermarket are all within half a mile, making this an excellent choice for commuters and those seeking easy access to local amenities.

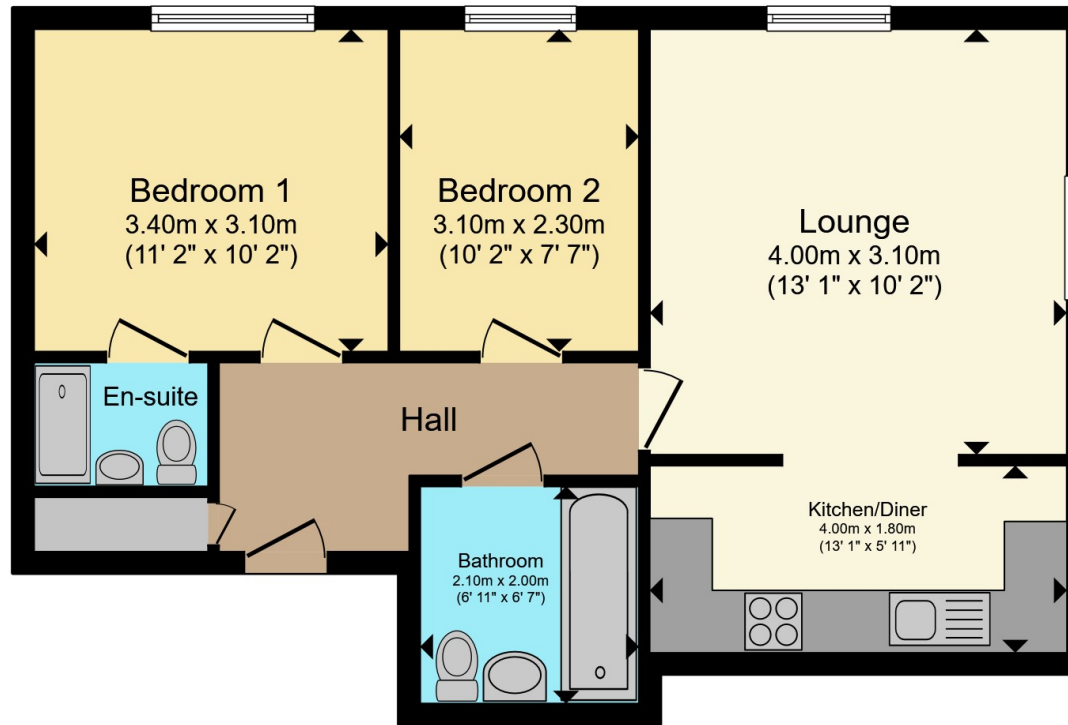
Please contact Connells to book a viewing.











Total floor area 56.8 m<sup>2</sup> (611 sq.ft.) approx

This floor plan is for illustrative purposes only. It is not drawn to scale. Any measurements, floor areas (including any total floor area), openings and orientation are approximate. No details are guaranteed, they cannot be relied upon for any purpose and they do not form part of any agreement. No liability is taken for any error, omission or misstatement. A party must rely upon its own inspection(s). Powered by [www.propertybox.io](http://www.propertybox.io)



To view this property please contact Connells on

**T 01795 477859**  
**E [sittingbourne@connells.co.uk](mailto:sittingbourne@connells.co.uk)**

68 High Street  
 SITTINGBOURNE ME10 4PB

EPC Rating: C Council Tax  
 Band: B

Service Charge:  
 2148.00

Ground Rent:  
 220.00

Tenure: Leasehold

**view this property online [connells.co.uk/Property/SIT104073](http://connells.co.uk/Property/SIT104073)**

This is a Leasehold property with details as follows; Term of Lease 125 years from 24 Jun 2018. Should you require further information please contact the branch. Please Note additional fees could be incurred for items such as



1. MONEY LAUNDERING REGULATIONS Intending purchasers will be asked to produce identification documentation at a later stage and we would ask for your co-operation in order that there will be no delay in agreeing the sale. 2. These particulars do not constitute part or all of an offer or contract. 3. The measurements indicated are supplied for guidance only and as such must be considered incorrect. Potential buyers are advised to recheck measurements before committing to any expense. 4. We have not tested any apparatus, equipment, fixtures, fittings or services and it is in the buyers interest to check the working condition of any appliances.

Connells Residential is registered in England and Wales under company number 1489613, Registered Office is Cumbria House, 16-20 Hockliffe Street, Leighton Buzzard, Bedfordshire, LU7 1GN. VAT Registration Number is 500 2481 05.

**See all our properties at [www.connells.co.uk](http://www.connells.co.uk) | [www.rightmove.co.uk](http://www.rightmove.co.uk) | [www.zoopla.co.uk](http://www.zoopla.co.uk)**

Property Ref: SIT104073 - 0008