



Eaton Rise, Ealing, W5

Helena Court | 3 Bedrooms

£2,450 per month



LONDON ESTATES



THREE DOUBLE BEDROOMS | GROUND FLOOR | SEPARATE FULLY FITTED KITCHEN | WALKING DISTANCE TO EALING BROADWAY | DIRECT ACCESS TO

Available Date: 4th July 2026

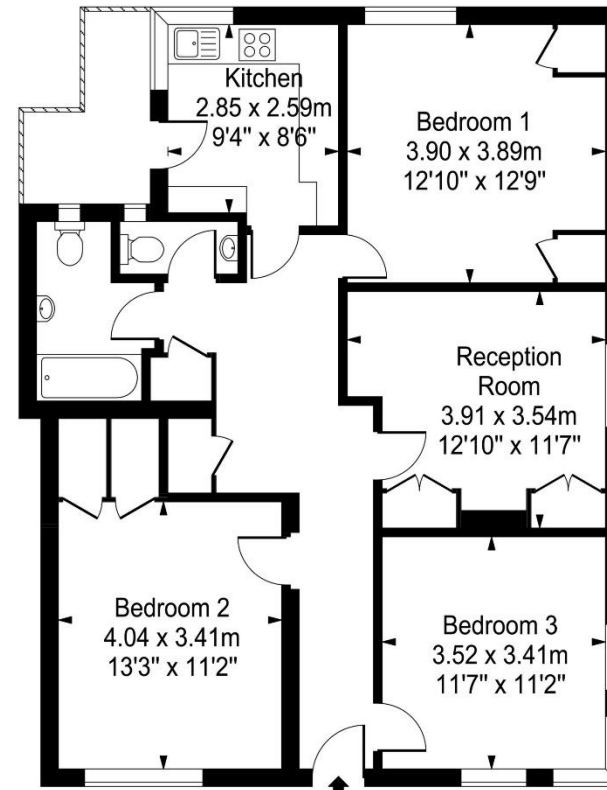
EPC Rating: C | Council Tax: D - £2,450 per month



LONDON ESTATES

Helena Court

Approx. Gross Internal Area
90 Sq M - 973 Sq Ft



Ground Floor

Every attempt is made to assure accuracy, however measurements are approximate and for illustrative purposes only. Not to scale.
Floor plan by www.frameworkphotos.co.uk