



Cadbury Way, SE16

£2,200 Per calendar month

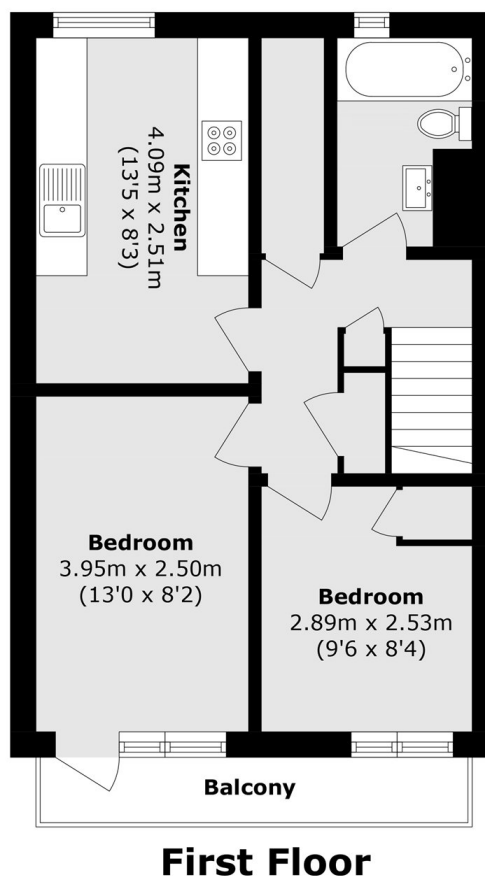
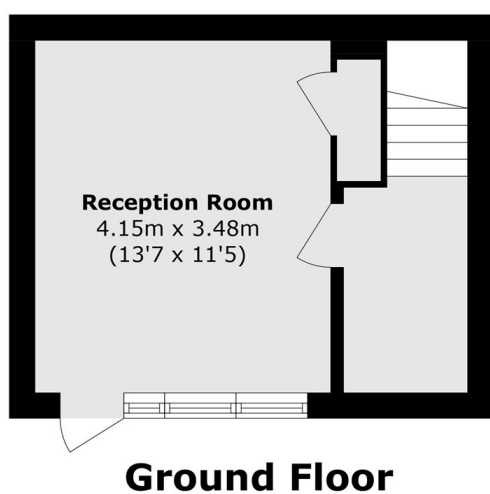
A furnished split level two double bedroom, one bathroom property in the heart of Bermondsey. This property comes with ample storage and heating is included.

Cadbury Way is located less than 300 yards from Bermondsey Station and is surrounded by shops, café's, restaurants and trendy food markets. Shad Thames and London Bridge are also close by.

Features

- Two Double Bedrooms
- Furnished
- Split-Level
- Ample Storage
- Heating Included
- Bermondsey Station

Cadbury Way,
London, SE16



Total area (approx.): 63.0 sq. m (678.1 sq. ft)
Balcony area (approx.): 4.2 sq. m (45.2 sq. ft)