

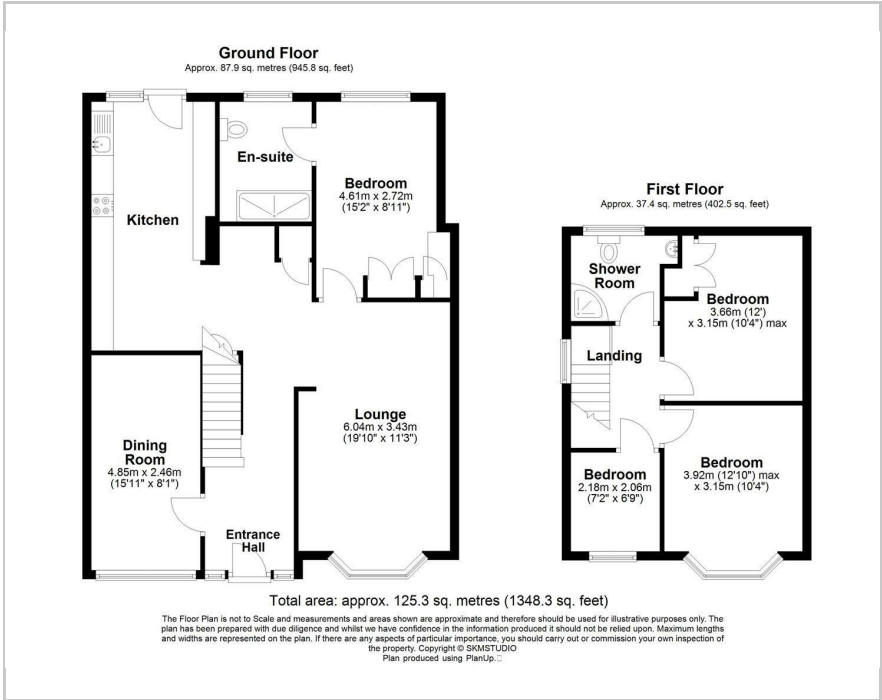
grosvenor
estate agents



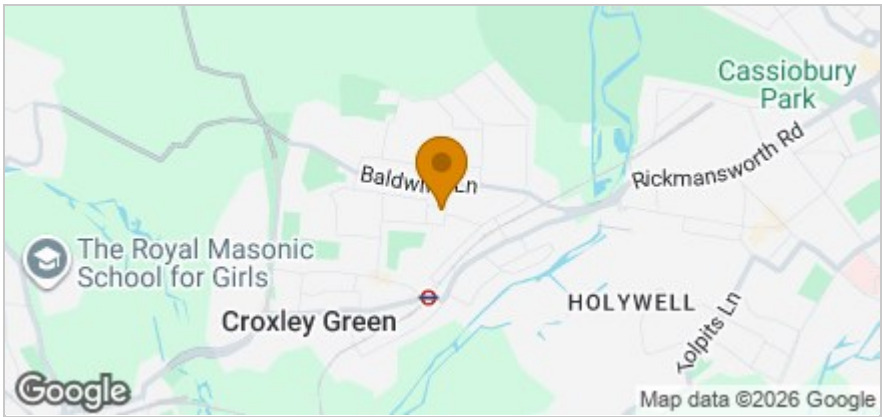
20 Malvern Way, Rickmansworth, WD3 3QJ
Offers In Excess Of £750,000



Floor Plan



Area Map



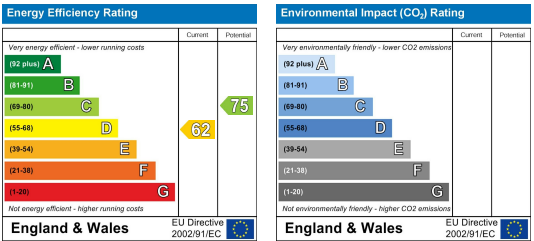
Accommodation

- Extended 3/4 semi detached family home
- Stones throw from outstanding junior school
- Easy walking distance to the Met Line Station
- 2 separate reception rooms and good size kitchen
- Good size rear garden
- Scope to reconfigure layout
- NO UPPER CHAIN

Viewing

Please contact our Grosvenor Estate Agents Ltd Office on 01923 711651 if you wish to arrange a viewing appointment for this property or require further information.

Energy Efficiency Graph



These particulars, whilst believed to be accurate are set out as a general outline only for guidance and do not constitute any part of an offer or contract. Intending purchasers should not rely on them as statements of representation of fact, but must satisfy themselves by inspection or otherwise as to their accuracy. No person in this firms employment has the authority to make or give any representation or warranty in respect of the property.