



Symonds  
& Sampson

Plot 214, 32 The Drove  
Nottingham Park, Weymouth, Dorset



# Plot 214

32 The Drove  
Nottingham Park  
Weymouth  
Dorset DT3 5FY

A beautiful 4 bedroom brick built detached family home backing onto fields.



- Spacious detached home
- Kitchen/dining room with separate utility room
  - Bathroom & ensuite facilities
    - Enclosed garden
- Double garage and four parking spaces
- Please call Symonds & Sampson Poundbury office on 01305 251154

Guide Price **£595,000**

Freehold

Poundbury Sales  
01305 251154  
[poundbury@symondsandsampson.co.uk](mailto:poundbury@symondsandsampson.co.uk)



## INTRODUCTION

This attractive brick built home includes a sitting room with patio doors, kitchen/dining room, a utility room, three double bedrooms, principal bedroom with en-suite, a single bedroom, bathroom, double garage with additional parking for two cars.

## THE PROPERTY

On the ground floor, a welcoming hall with stairs rising to the first floor, and downstairs cloakroom. The spacious sitting room to one side has a bright and airy feel with a window to the front and a set of rear double glazed patio doors leading out onto the fully enclosed rear garden. A spacious kitchen/dining room is the hub of the home offering a range of eye and base level units with work surfaces over, integrated appliances, plenty of space for a dining table and chairs, and room for a sofa. There is a utility room off the kitchen with a rear aspect door leading out onto the garden.

The first floor offers a spacious landing area leading to the family bathroom and four bedrooms, three double rooms and a single with the principal bedroom benefitting a contemporary shower en-suite.

Please Note:  
The drawings and particulars are for illustrative purposes

only and shall not form part of any contract. Example images on the brochure are from a typical show home.

## OUTSIDE

Outside offers a generous sized level garden laid to lawn and patio. To the side of the property there is a double garage and two allocated parking spaces

## SITUATION

Nottingham Park is an exciting new development designed around green open spaces, tree lined avenues, woodland play area and walkways. A good range of amenities can be found within approximately 1 mile including a general store, petrol station, florist, veterinary clinic, supermarket and sport centre, all located on Dorchester Road. There are also both primary and secondary schools close by.

Weymouth town centre can be found within approximately 2 miles and offers a comprehensive range of shops, marina and picturesque harbour, blue flag sandy beach and a range of recreational and cultural facilities. The area also provides the opportunity to enjoy a range of sailing and water sports activities, beaches and walks along the World Heritage Jurassic. There is a mainline rail station at Upwey, approximately  $\frac{3}{4}$  of a mile from the property which provides rail links to London Waterloo and Bristol Temple Meads.

## DIRECTIONS

What3words:///dispose.glass.nylon

## SERVICES

Mains gas, electric, water and drainage. Gas fired central heating system.

The property will include a NHBC 10-year warranty and benefits from a gas fired central heating system.

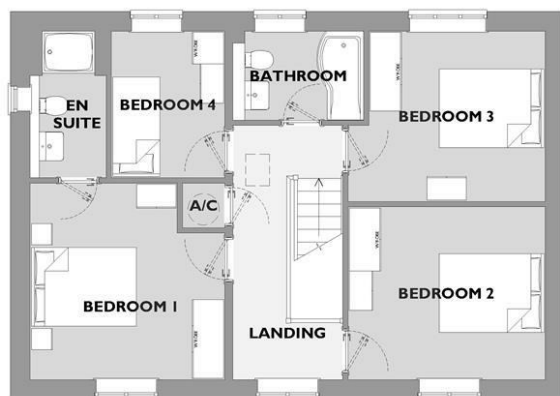
Local Authority Dorset Council - Tel: 01305 251010

Council tax band – new build to be assessed  
Predicted EPC band - B

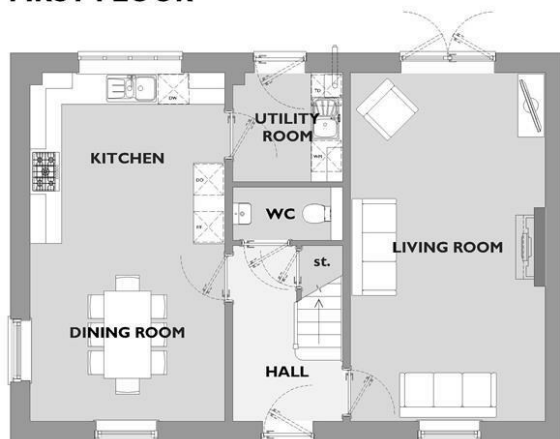
Estate management charge  
£205.53 per annum(2026)







**FIRST FLOOR**



**GROUND FLOOR**

## PLOT 214

### FOUR BEDROOM HOME

#### FIRST FLOOR

Bedroom 1  
3.71 x 3.75m (12'2 x 12'4ft max)  
(Dimensions including airing cup'd)

Bedroom 2  
3.76 x 3.30m (12'4 x 10'10ft)

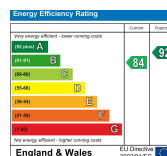
Bedroom 3  
3.36 x 3.25m (11'0 x 10'8ft max)  
(Dimensions excluding door recess)

Bedroom 4  
2.16 x 2.80m (7'1 x 9'2ft)

#### GROUND FLOOR

Living Room  
3.71 x 6.65m (12'2 x 21'10ft max)

Kitchen / Dining Room  
3.71 x 6.65m (12'2 x 21'10ft max)



Poundbury/PGS/19.02.26



01305 251154

poundbury@symondsandsampson.co.uk  
Symonds & Sampson LLP  
Arch Point House, 7 Queen Mother Square,  
Poundbury, Dorset DT1 3BY



Important Notice: Symonds & Sampson LLP and their Clients give notice that: 1. They have no authority to make or give any representations or warranties in relation to the property. These particulars do not form part of any offer or contract and must not be relied upon as statements or representations of fact. 2. Any areas, measurements or distances are approximate. The text, photographs and plans are for guidance only and are not necessarily comprehensive. It should not be assumed that the properties have all necessary planning, building regulation or other consents and Symonds & Sampson LLP have not tested any services, equipment or facilities. 3. We have not made any investigation into the existence or otherwise of any issues concerning pollution of the land, air or water contamination and the purchaser is responsible for making his/her own enquiries in this regard. 4. The property is sold subject to and with the benefit of all existing wayleaves, easements and rights of way whether public or private, specifically mentioned or not. The vendors shall not be required to define any such rights, privileges or advantages.

**SALES | LETTINGS | AUCTIONS | FARMS & LAND | COMMERCIAL | NEW HOMES | PLANNING & DEVELOPMENT**