



Arthur Street, Eccles

Manchester



Offers in Region of £325,000

Arthur Street

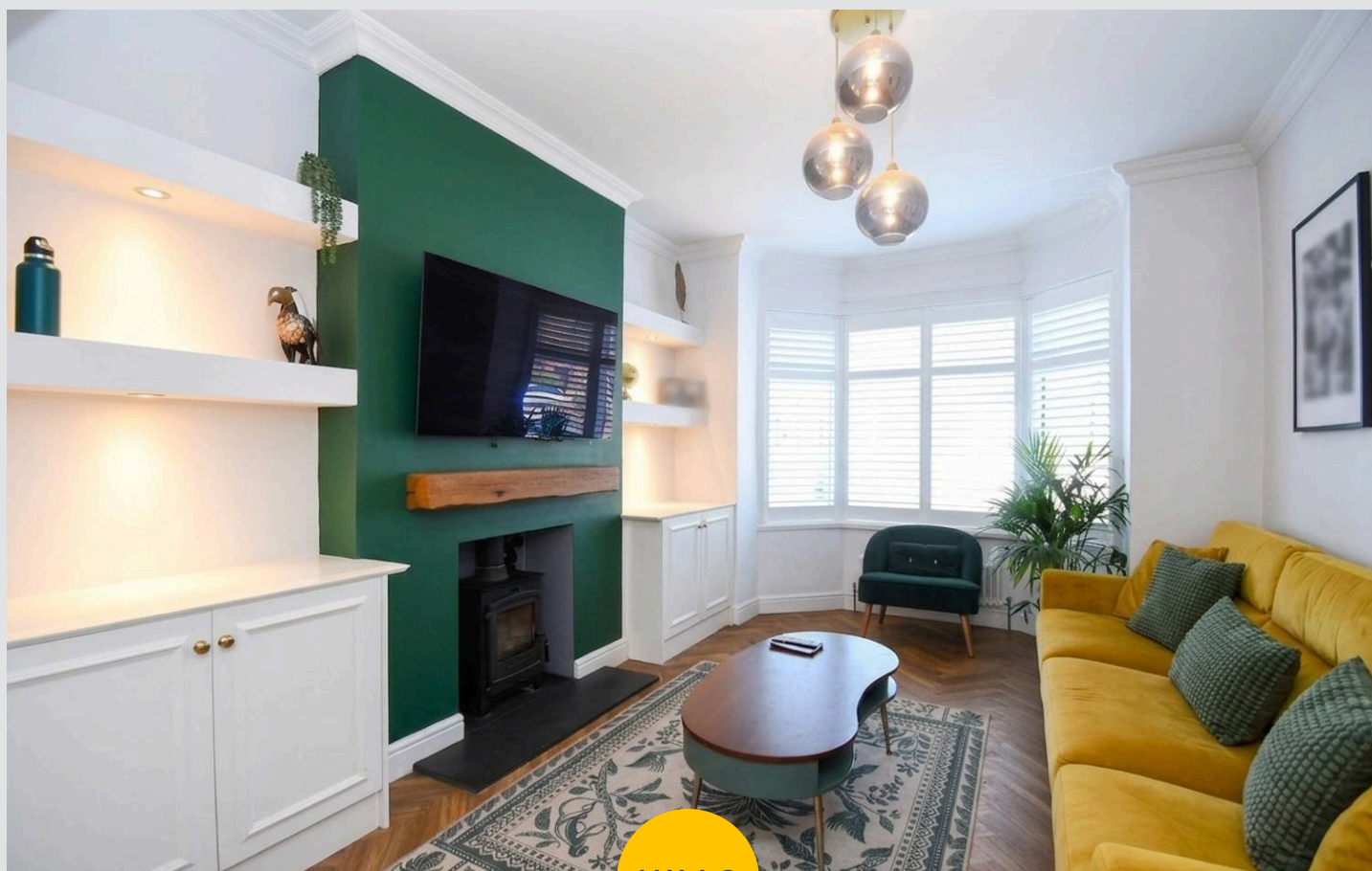
Eccles, Manchester

Stunning four bed semi-detached home with bay lounge, dining room, shaker kitchen, modern bathroom, off-road parking, and prime location near schools, amenities, and transport links.

Council Tax band: B

Tenure: Leasehold

- Beautifully Presented Family Home Laid across Three Fabulous Floors
- Bay Fronted Lounge with Log Burner and Separate Dining Room
- Timeless Shaker Style Kitchen with Granite Worksurfaces
- Four Generously Sized Bedrooms, Master with Fitted Wardrobes
- Modern Bathroom Suite Updated in the Last Five Years
- Off Road Parking for Multiple Cars
- Private, Sun Drenched Low Maintenance Rear Garden with Artificial Lawn
- Well Connected to Amenities, Schools and Brilliant Transport Links



HILLS



Entrance Hallway

11' 1" x 3' 3" (3.38m x 0.99m)

Reception Room One

16' 3" x 11' 1" (4.95m x 3.38m)

Reception Two

13' 9" x 11' 9" (4.19m x 3.58m)

Kitchen

16' 6" x 8' 4" (5.03m x 2.54m)

First Floor Landing

Bedroom Two

13' 8" x 12' 6" (4.17m x 3.81m)

Bedroom Three

14' 0" x 9' 7" (4.27m x 2.92m)

Bedroom Four

8' 4" x 7' 7" (2.54m x 2.31m)

Bathroom

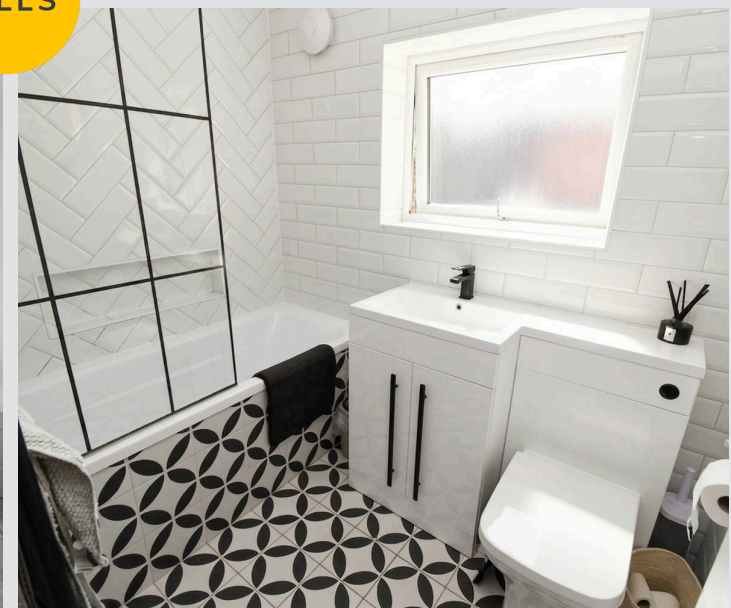
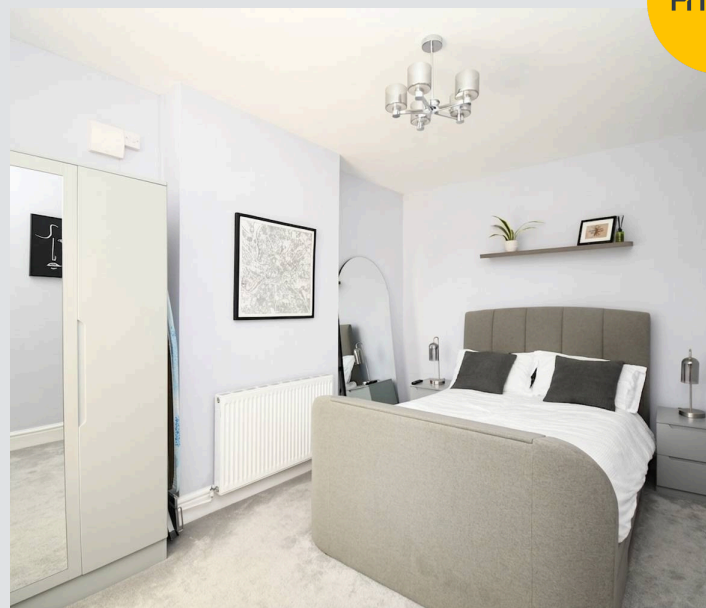
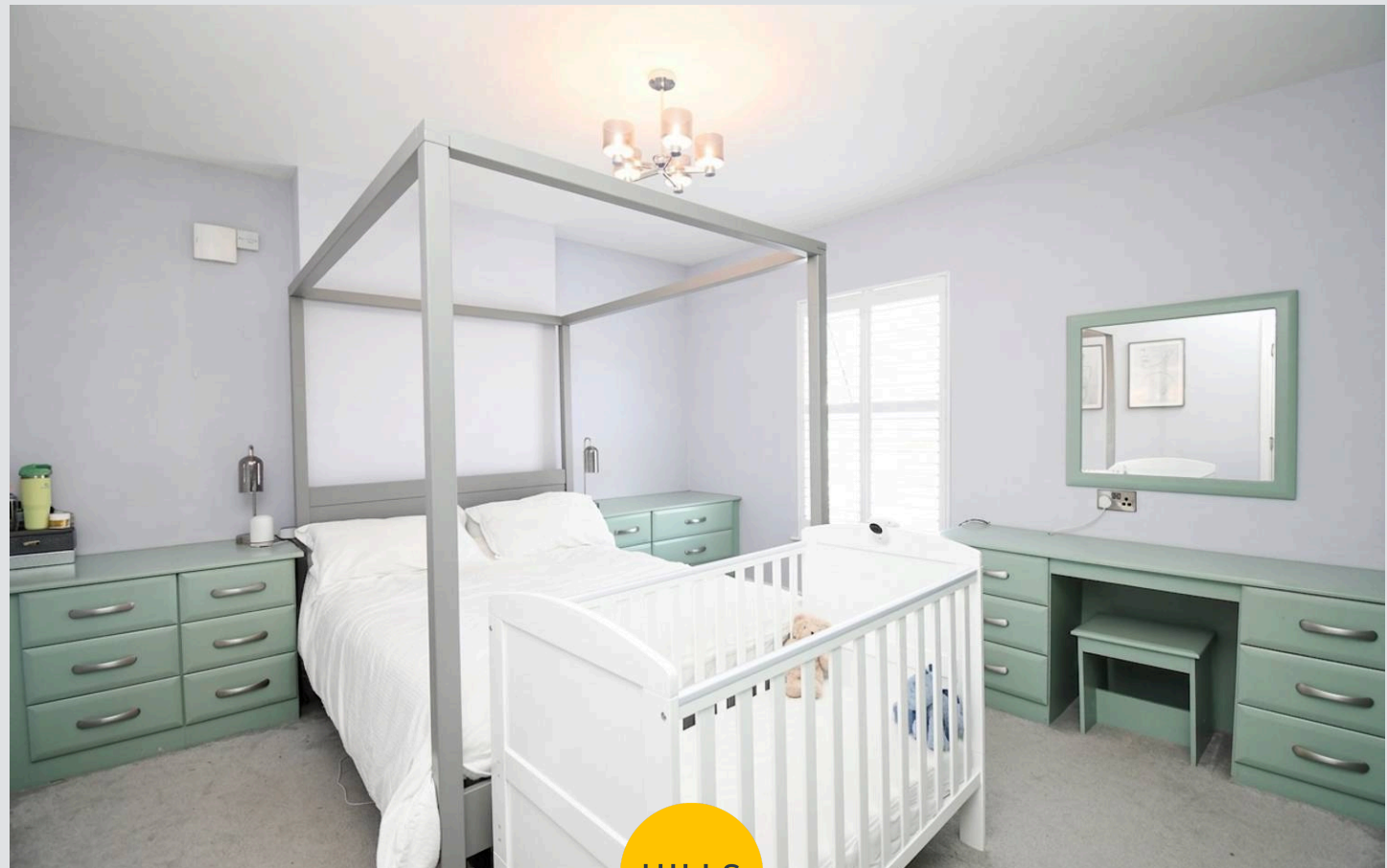
7' 1" x 5' 2" (2.16m x 1.58m)

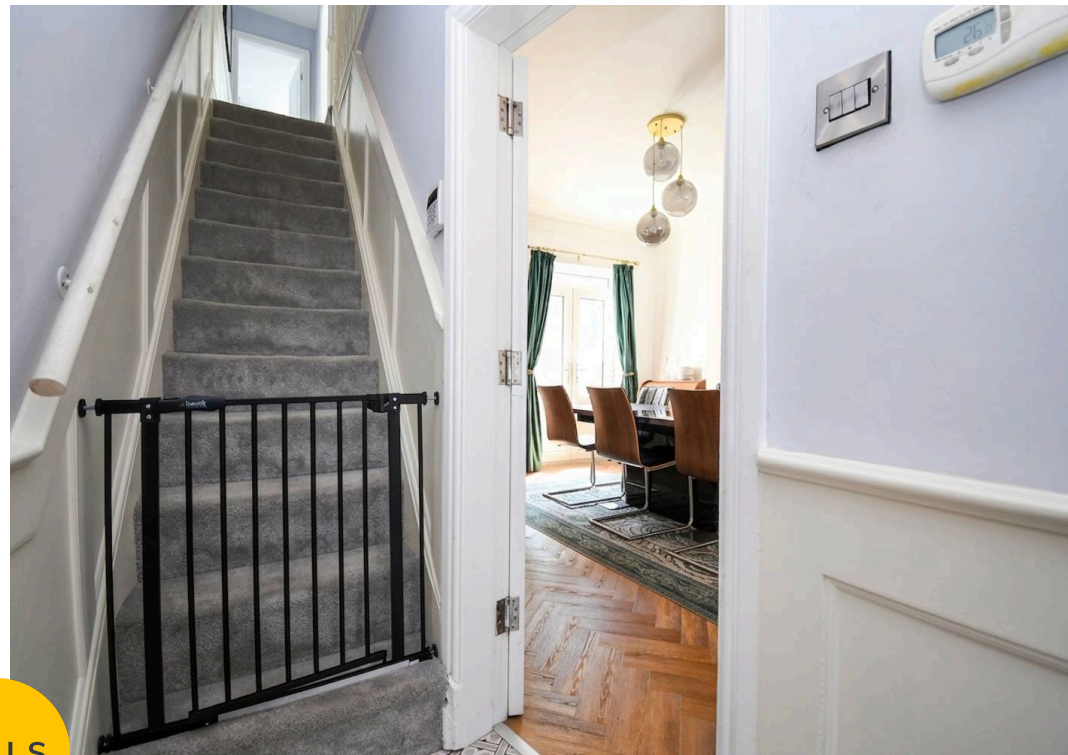
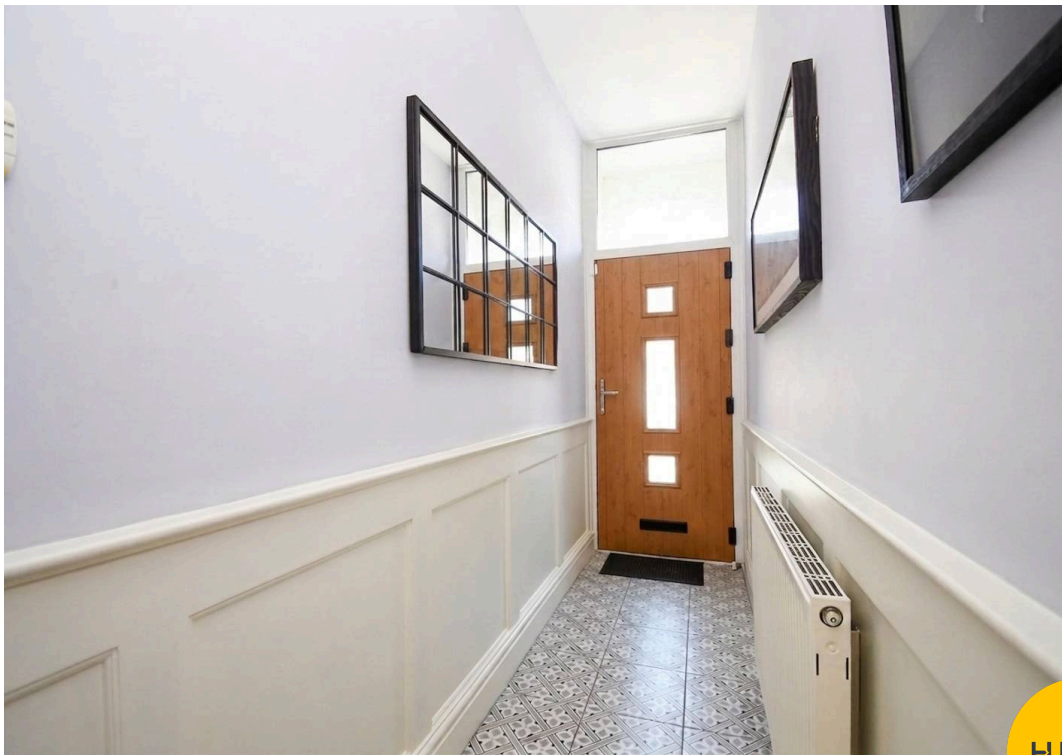
Second Floor Landing

Ceiling light point.

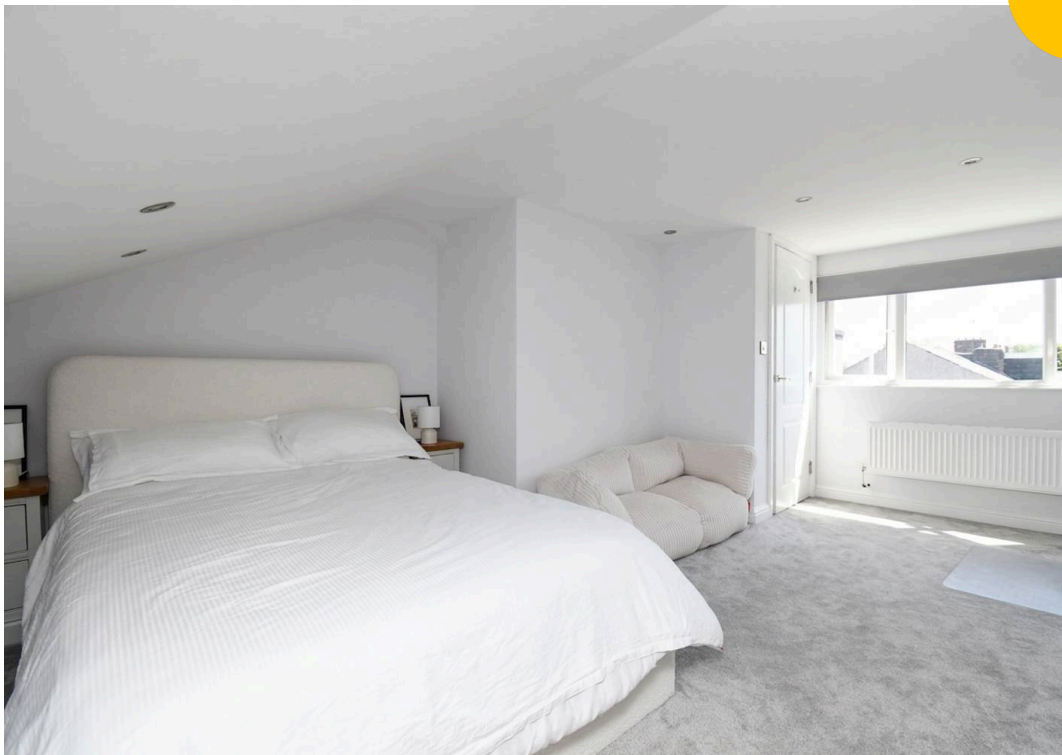
Bedroom One

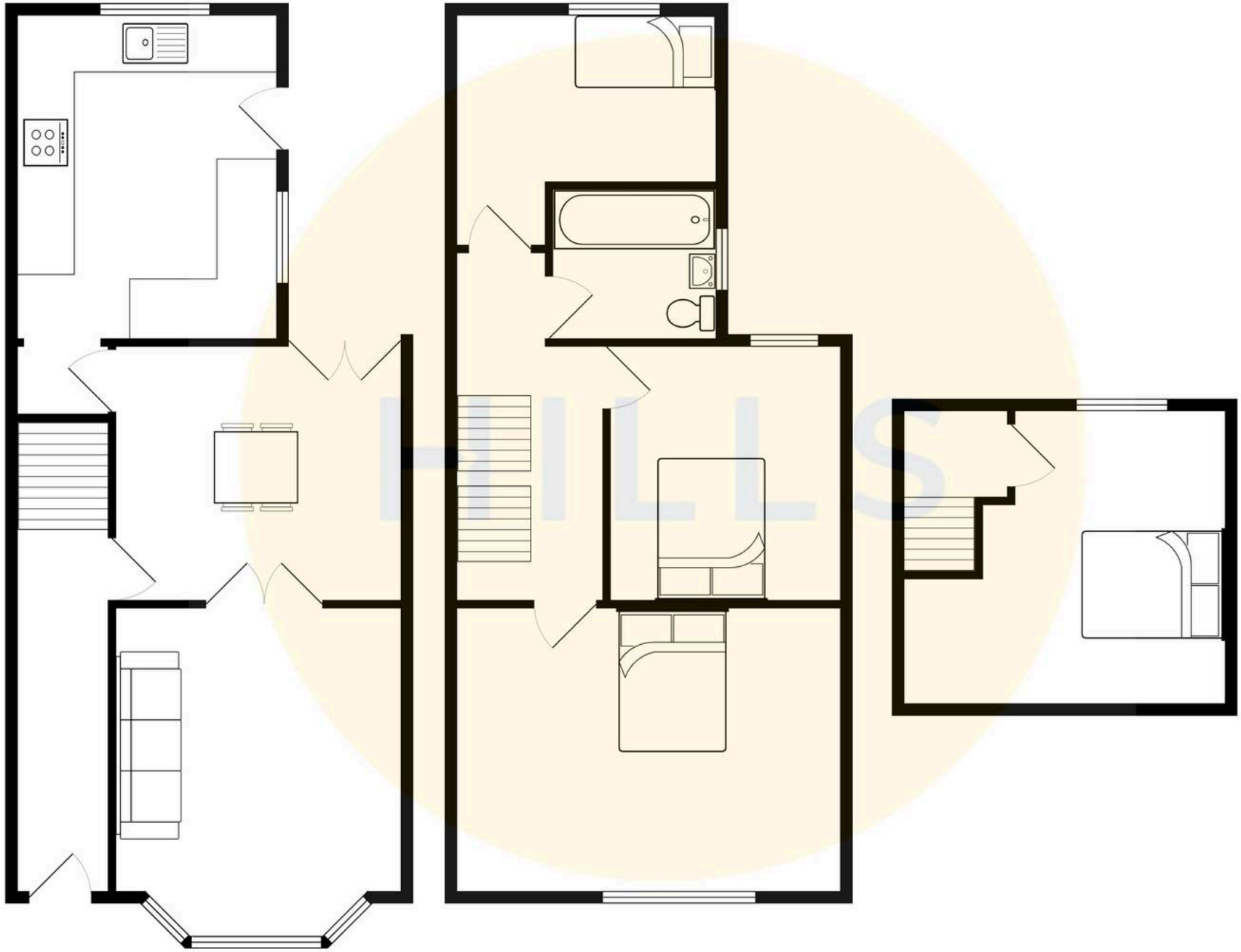
19' 1" x 13' 4" (5.81m x 4.06m)





HILLS







Hills | Salfords Estate Agent

Hills Residential, Sentinel House Albert Street – M30 0SS

0161 707 4900

sales@hills.agency

www.hills.agency/



By law, we are required to conduct anti-money laundering checks on all potential buyers and sellers. In line with HMRC guidelines, our trusted partner, Coadjute, will securely manage these checks on our behalf. A non-refundable fee of £45 + VAT per person will apply, and Coadjute will handle the payment. Once an offer is accepted, Coadjute will send a secure link for you to complete the biometric checks. These checks must be completed before we can send the memorandum of sale to all parties. PLEASE NOTE: The Agent has not tested any equipment, fixtures, fittings or services so cannot verify that they are in working order or fit for the purpose. References to the properties tenure are based on information supplied by the seller. You are advised to check the availability of this property before travelling any distance to view. Every effort has been made to ensure these particulars are correct and not misleading but their accuracy is not guaranteed nor do they form part of any contract.