



## Rosslyn Road, TW1

### £380,000

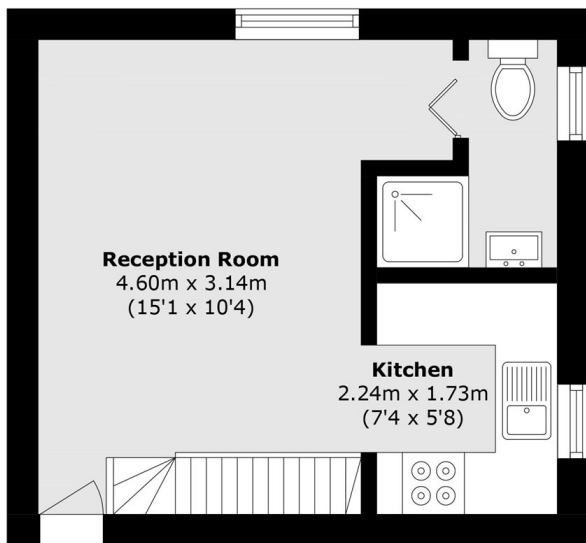
Situated in the heart of East Twickenham, is this charming first floor studio apartment boasting high ceilings, an abundance of period features, a modern kitchen and a bathroom. Further benefits include access to unallocated off-street parking and a share of the freehold. Ideally suited to first time buyers or investors, the property offers character, comfort and convenience in a sought after location.

Rosslyn Road is a premier road in East Twickenham just 0.2 miles of St Margarets village with its boutique shops, cafés and train station. Richmond Bridge and Richmond town centre are only 1 mile away with its popular shops, restaurants, fast overground service to London Waterloo and tube lines. Moor Mead Park, Marble Hill Park and the River Thames are also close by.

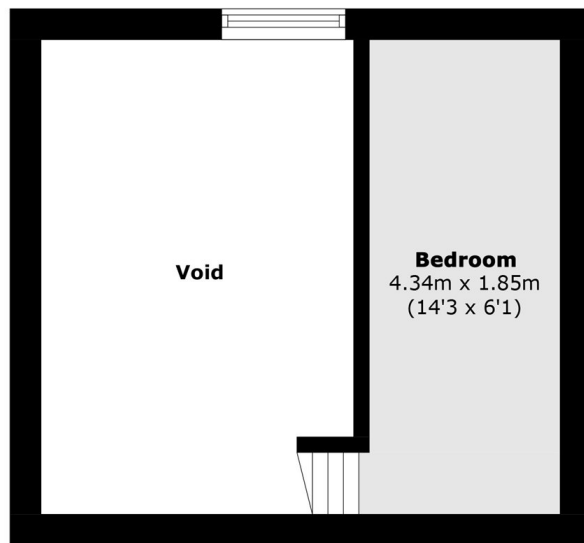
### Features

- Victorian Conversion
- High Ceilings
- Central Location
- First Floor
- Share Of Freehold
- Excellent Condition

# Rosslyn Road, East Twickenham, TW1



**First Floor**



**Mezzanine**

Total area (approx.): 31.6 sq. m (340.1sq. ft)  
(Excluding Void)