



Archel Road, W14

£2,100 Per calendar month

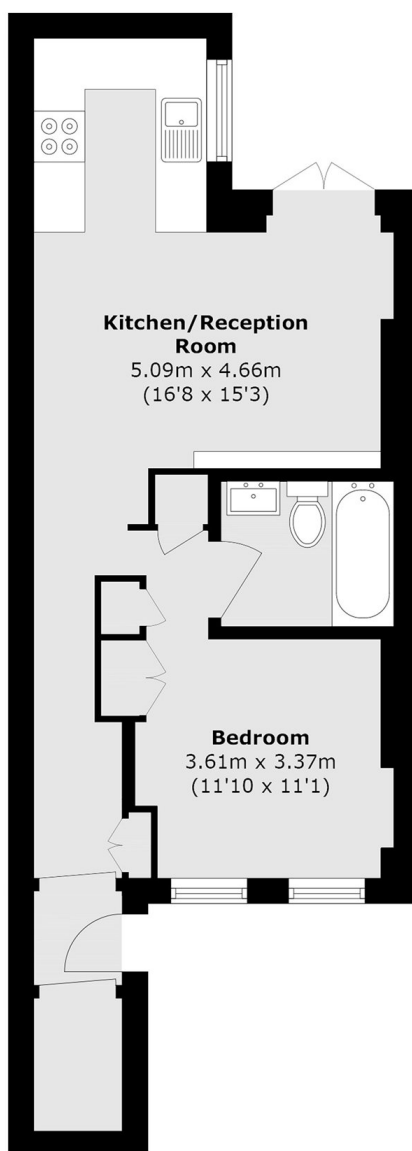
This one bedroom garden flat offers fantastic proportions throughout with fantastic private garden, semi open plan living and fitted storage. This property is ideal for a single professional or couple.

Archel Road is close to all the shops, bars, cafés and restaurants that West Brompton, Fulham Broadway and West Kensington have to offer.

Features

- One Bedroom
- One Bathroom
- Private Entrance
- Private Garden
- Semi Open Plan Living
- Fitted Storage

Archel Road, London, W14



Total area (approx.): 40.3 sq. m (433.8 sq. ft)