



**46 Limestone Way, Bleadon**

Weston-Super-Mare

**£399,995**



## 46 Limestone Way

Bleadon, Weston-Super-Mare

Plot 21 - The Chepstow - A Brand new 3 bed semi by Edenstone Homes at Eden's Green. Features open plan kitchen, underfloor heating, private garden, garage, parking, NHBC warranty. Council Tax band: D

Tenure: Freehold

- Plot 21 - The Chepstow - Eden's Green Development
- New development - Eden's Green, Edenstone Homes.
- NHBC warranty
- High specification throughout
- Open plan kitchen/diner with beautiful velux
- Single garage with two additional parking spaces
- Underfloor heating
- Private rear garden
- Excellent transport links
- Popular village location





### **Kitchen/diner**

Located on the ground floor towards the rear of the property, the space has storage, a double oven, breakfast bar area. Downlighting comes as standard.

### **Family area**

Located on the ground floor towards the rear of the property. The space has bi fold doors that open up onto the rear garden. The velux skylight allows light to flow into the space.

### **Lounge**

Spacious lounge located on the ground floor towards the front of the property. The space has a bay window at the front of the room.

### **Hallway**

Direct access to the kitchen & lounge.

### **Wc**

Located on the ground floor, accessed off the hallway.

### **Principal Bedroom**

Located on the first floor, the space is a double room with direct access to the en suite. Photos are of a show home.

### **En Suite**

Located on the first floor the space has a double shower tray en suite.

### **Bedroom 2**

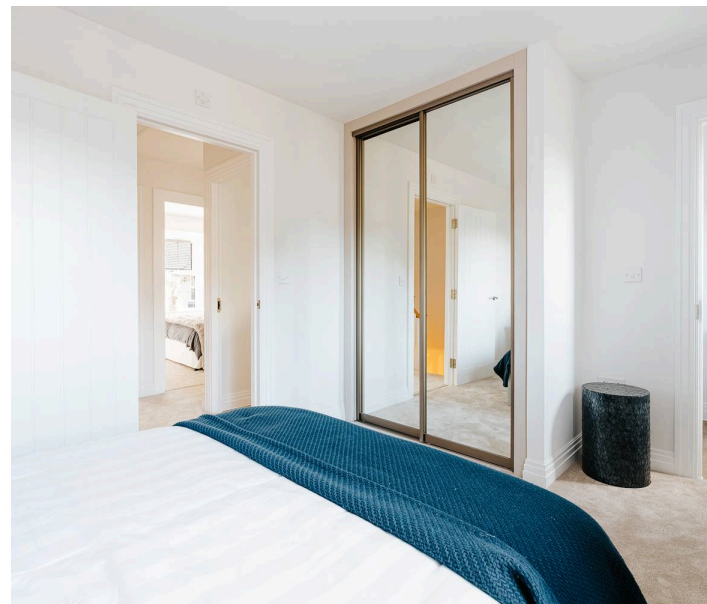
Located on the first floor towards the front of the property, the room is a double with a bay window area.

### **Bedroom 3**

Located on the first floor towards the front of the property.

### **Bathroom**

Family bathroom located off the hallway serving all bedrooms.





EDEN'S GREEN  
BLEADON

# VIEW HOME OPEN WEEKEND

16/17 May 2026

## REAR GARDEN

Rear garden accessed through bifold doors.

## DRIVEWAY

2 Parking Spaces

2 Parking Spaces.

## GARAGE

Single Garage

Single garage.



# THE CHEPSTOW

A THREE BEDROOM SEMI-DETACHED FAMILY HOME



## GROUND FLOOR

Kitchen / Dining	5.20m x 3.58m	17'1" x 11'9"
Family	3.75m x 2.81m	12'4" x 9'3"
Lounge	4.67m x 3.06m	15'4" x 10'0"

## FIRST FLOOR

Bedroom 1	3.82m x 3.02m	12'6" x 9'11"
Bedroom 2	2.86m x 2.80m	9'5" x 9'2"
Bedroom 3	2.88m x 2.31m	9'5" x 7'7"

Elevation treatments may vary by plot.



# Site Plan

- 4 bedroom
  - Kingsholm
  - Monmouth
  - Tintern
  - Dartford
- 3 bedroom
  - Chepstow
  - Affordable housing
- Bat house
- Play area
- Community orchard



Housen Estates is proud to partner with **Custom Insurance & Mortgage Solutions** to offer expert mortgage and insurance advice tailored to your property journey. Whether you're buying your first home, moving up the ladder, or expanding your portfolio, our trusted partners provide personalised support, access to a wide panel of lenders, and guidance every step of the way. Together, we make securing your dream home simple, smart, and stress-free.

Scan the QR code or visit [www.custominsurancemortgagesolutions.co.uk](http://www.custominsurancemortgagesolutions.co.uk) and click on 'Start Your Journey' at the top of any page.