



Stratford Road, Wolverton, Milton Keynes  
Guide Price £250,000 Freehold

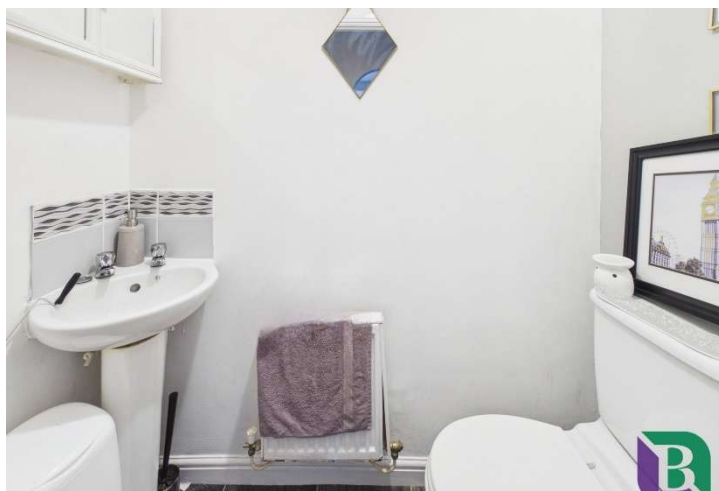


A well presented two bedroom mid terrace property situated on the popular Stratford Road in Wolverton, offering comfortable living space ideal for first time buyers or investors.



# Stratford Road

Wolverton, MK12 5FD



- No Upper Chain
- Great Investment Or First Time Buy
- Access To Train Station
- Two Double Bedrooms
- Cloakroom
- Allocated Parking
- Family Bathroom



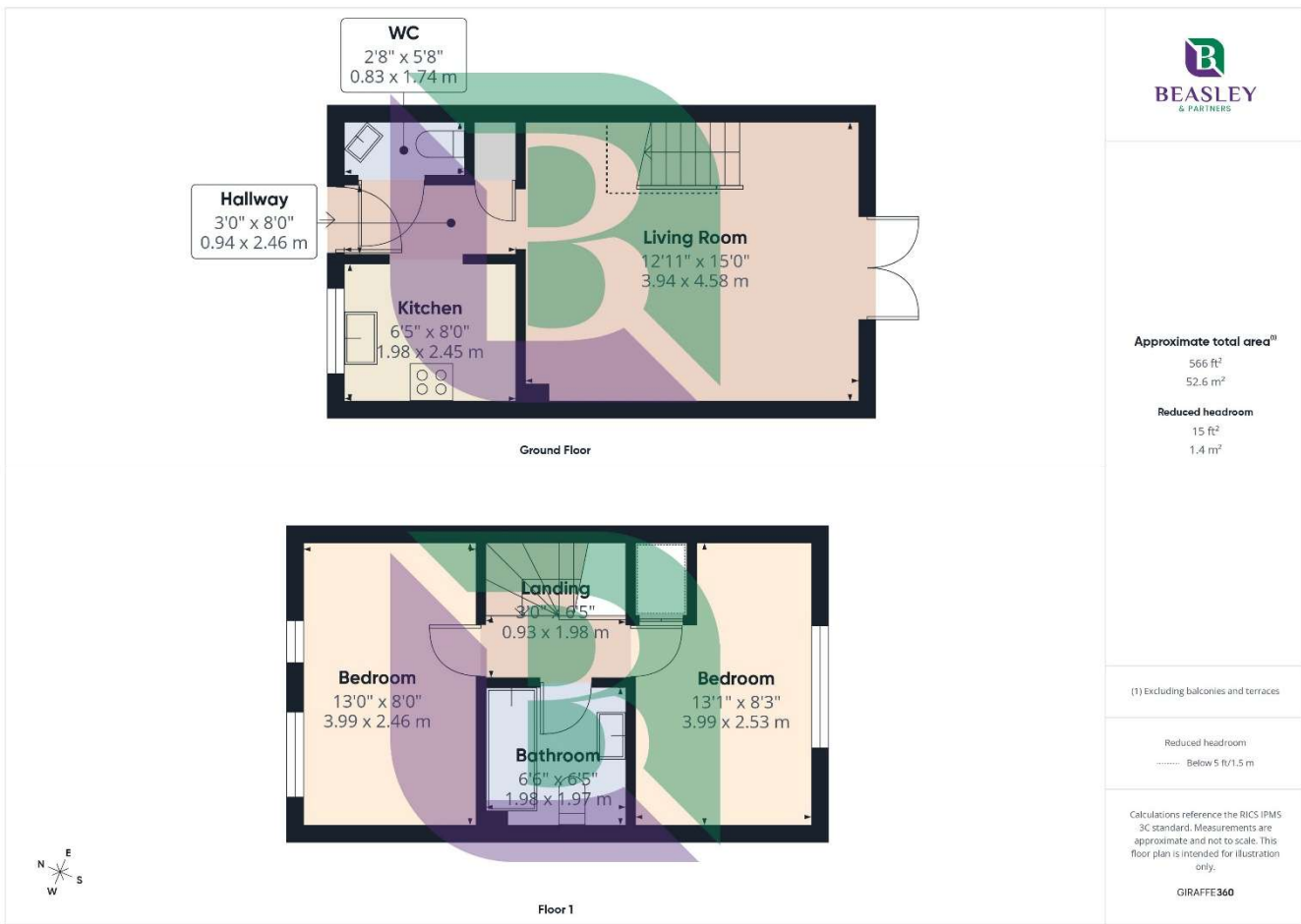
The ground floor features a re fitted modern kitchen, a convenient cloakroom, and a spacious lounge with doors opening directly onto the rear garden, creating a bright and welcoming living area perfect for both relaxing and entertaining.

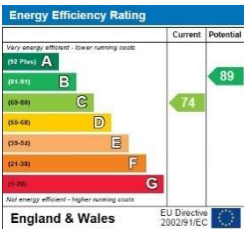
Upstairs, the property boasts two generously sized double bedrooms along with a family bathroom, providing ample accommodation.

Outside, the home benefits from an enclosed rear garden and allocated parking, adding to its practicality and appeal.

Ideally positioned, Stratford Road offers easy access to Wolverton town centre, where a range of local shops, cafés, and everyday amenities can be found. Wolverton railway station is also nearby, providing direct links to Milton Keynes Central and London, making the area particularly appealing for commuters.

The surrounding area benefits from a selection of local schools, parks, and green spaces, adding to its family-friendly appeal. With good road connections to the A5 and wider Milton Keynes Road network, Stratford Road combines convenience with a pleasant residential setting.





### Notice

Please note we have not tested any apparatus, fixtures, fittings, or services. Interested parties must undertake their own investigation into the working order of these items. All measurements are approximate and photographs provided for guidance only.



6 High Street  
Woburn Sands  
Buckinghamshire  
MK17 8RL

