



Sunrise Drive, The Bay, Filey, YO14 9GE

- End Terrace House
- The Bay Holiday Village
- Perfect Holiday Home / Holiday Let
- Two Bedrooms
- Communal Gardens & Parking
- EPC Grade: C

Offers In Excess Of £140,000



Sunrise Drive, The Bay, Filey, YO14 9GE

DESCRIPTION

Discover this delightful end-terrace home set on Sunrise Drive within The Bay, an award-winning coastal holiday village just outside the popular seaside town of Filey. The Bay offers direct access to the beach together with a fantastic range of on-site amenities including a gym, tennis court, leisure centre, beauty salon, shop, and a lovely public house.

The property features a bright and spacious open-plan living and dining area, creating the perfect spending time with loved ones. Patio doors open out to the rear patio and shared gardens, while the separate, modern kitchen is fitted with an oven, hob, microwave, dishwasher, washing machine, and fridge freezer. A handy downstairs WC adds extra convenience.

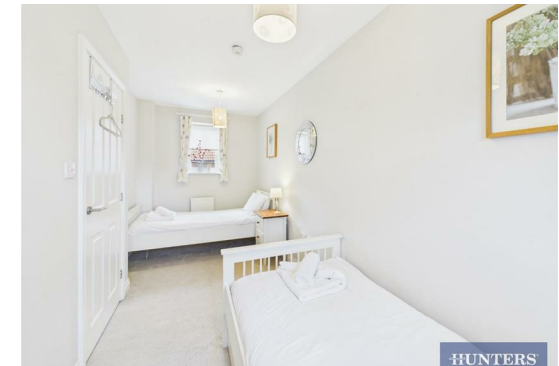
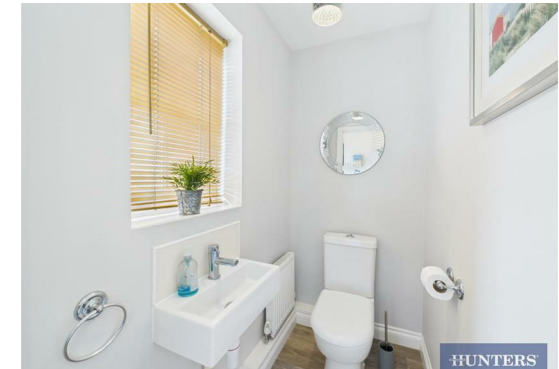
Upstairs, there are two generous bedrooms, one complete with fitted wardrobes. The contemporary family bathroom offers a shower over the bath, vanity unit with sink, and low-level WC.

Externally, the house benefits from communal parking and access to well-kept shared gardens. The rear patio is ideal for enjoying the sunshine or giving children a safe space to play.

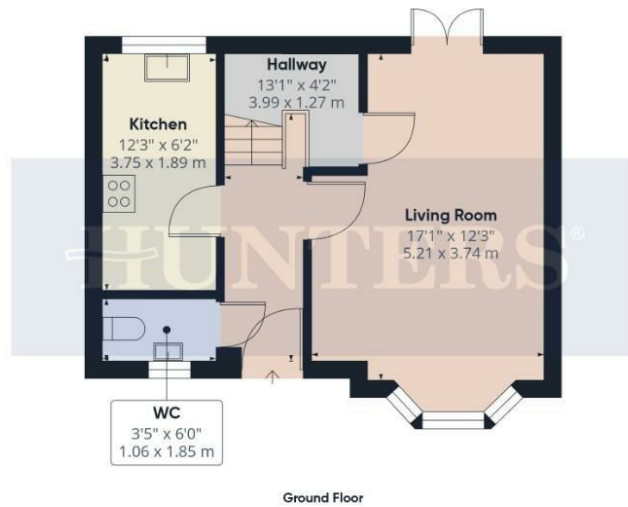
Perfectly located, this house provides a peaceful coastal retreat with all local amenities and natural beauty close at hand. It represents an excellent choice whether you are seeking a personal holiday getaway or a profitable holiday let investment.

We understand the property is leasehold with approximately 981 years remaining, and a current annual service charge (including ground rent) of around £5,055.12. Pets and holiday letting are permitted, though AST tenancies are not allowed.

This is a wonderful chance to secure your own slice of Filey's coastline within this sought-after holiday development. Get in touch today to arrange a viewing and take the next step toward making this inviting property yours.







HUNTERS

Approximate total area⁽¹⁾
712 ft²
66.2 m²

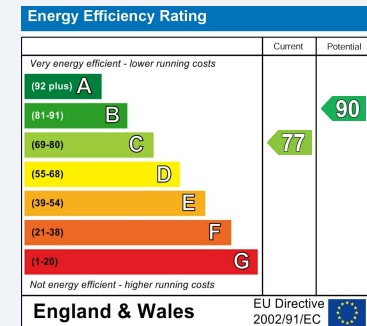
(1) Excluding balconies and terraces

Calculations reference the RICS IPMS 3C standard. Measurements are approximate and not to scale. This floor plan is intended for illustration only.

GIRAFFE360

ENERGY PERFORMANCE CERTIFICATE

The energy efficiency rating is a measure of the overall efficacy of a home. The higher the rating the more energy efficient the home is and the lower the fuel bills will be.



These particulars are intended to give a fair and reliable description of the property but no responsibility for any inaccuracy or error can be accepted and do not constitute an offer or contract. We have not tested any services or appliances (including central heating if fitted) referred to in these particulars and the purchasers are advised to satisfy themselves as to the working order and condition. If a property is unoccupied at any time there may be reconnection charges for any switched off/disconnected or drained services or appliances - All measurements are approximate.

THINKING OF SELLING? If you are thinking of selling your home or just curious to discover the value of your property, Hunters would be pleased to provide free, no obligation sales and marketing advice. Even if your home is outside the area covered by our local offices we can arrange a Market Appraisal through our national network of Hunters estate agents.

Viewings

Please contact filey@hunters.com, if you wish to arrange a viewing appointment for this property or require further information.

Valuations

For a valuation of your property, please email the team with your property details, contact information and the times you are available.



7a Murray Street, Filey, YO14 9DA
Tel: 01723 338958 Email: filey@hunters.com <https://www.hunters.com>

