



## Grove Avenue, TW1

£399,950

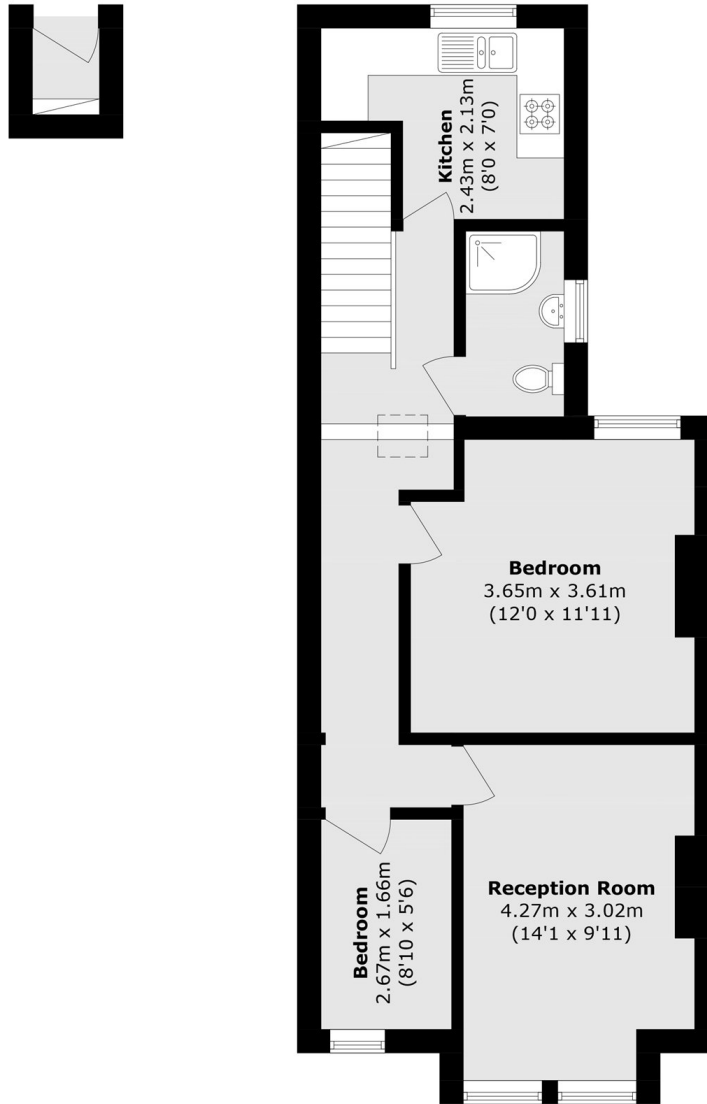
Offer Over £399,950. This first floor two bedroom flat is in an excellent location just off Twickenham high street and is also close to Twickenham mainline station. The property comes with a bright kitchen, a spacious living area and the benefit of a private garden. There is no onward chain.

Grove Avenue is located just off Twickenham high street where there are a vast array of shops, pubs and restaurants. Twickenham station with its fast link to Waterloo is just a few hundred yards away and there are many excellent state and private schools nearby.

### Features

- First Floor Apartment
- Two Bedrooms
- No Onward Chain
- Large Private Garden
- Excellent Location
- Share of Freehold

# Grove Avenue, Twickenham, TW1



**Ground Floor**

**First Floor**

Total area (approx.): 54.2 sq. m (582.9 sq. ft)