



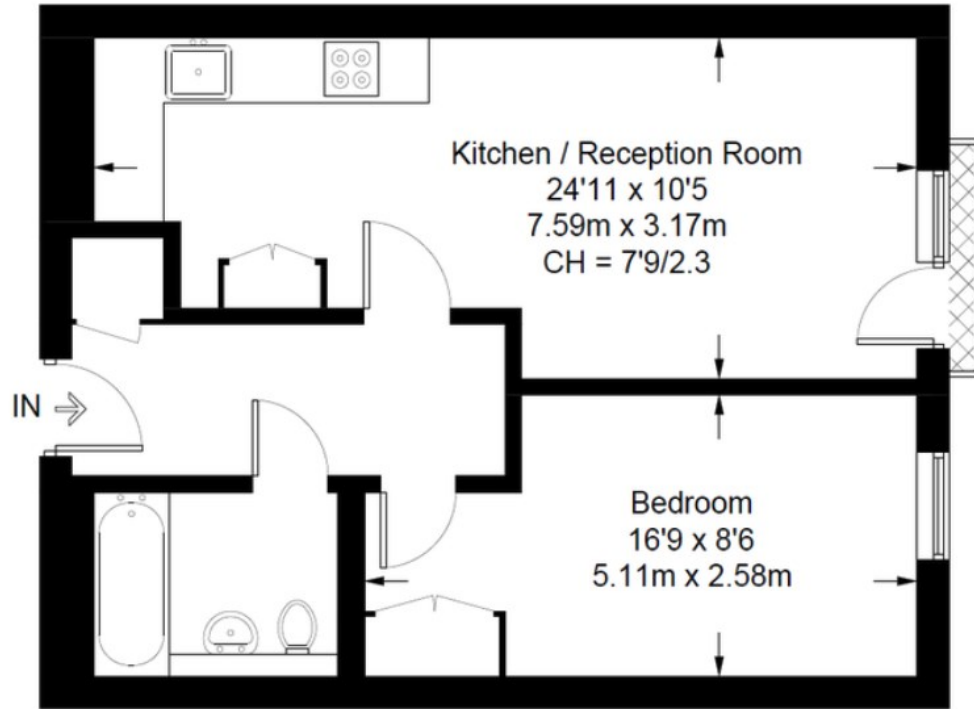
## Wood House, Grosvenor Waterside, Chelsea SW1W 8DF

£2,500 Per Month

- Sought after Development
- 10 Minutes Walk to Battersea
- Modern
- Gym, Spa Included
- 24 Hr Concierge
- 10 Minutes Walk to Victoria and Sloane Square Stations
- Secure Access

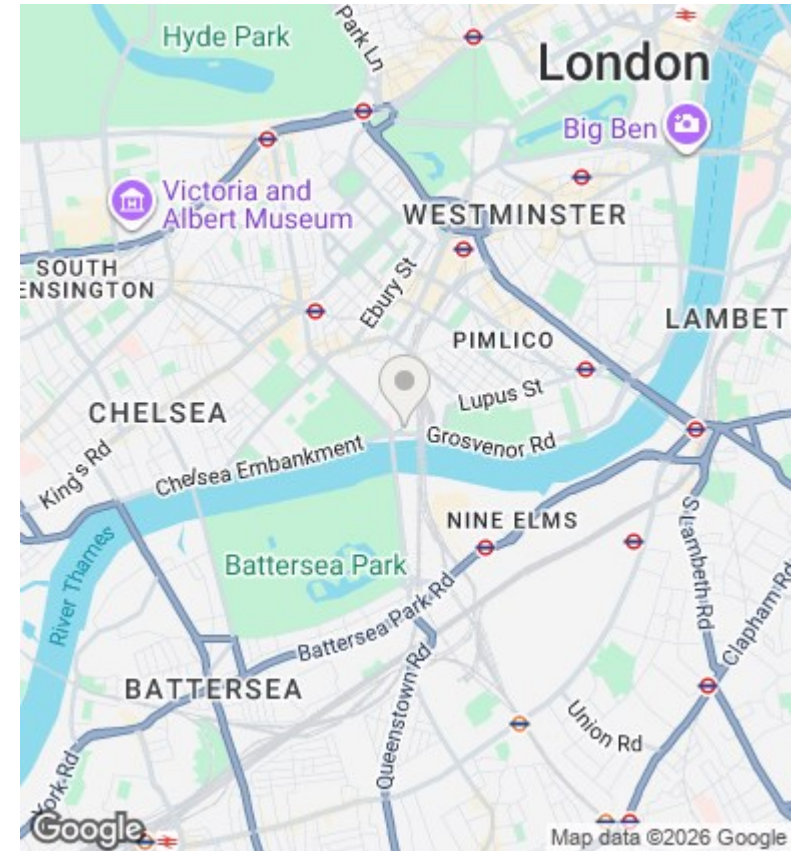
## Woods House

Approximate Gross Internal Area = 498 sq ft / 46.3 sq m



Kitchen / Reception Room  
24'11 x 10'5  
7.59m x 3.17m  
CH = 7'9/2.3

Bedroom  
16'9 x 8'6  
5.11m x 2.58m



## Viewings

Viewings by arrangement only.  
Call 02077225022 to make an appointment.

## Council Tax Band

D

## EPC Rating:

B

Energy Efficiency Rating		Current	Potential
<i>Very energy efficient - lower running costs</i>			
(92 plus) <b>A</b>			
(81-91) <b>B</b>		82	82
(69-80) <b>C</b>			
(55-68) <b>D</b>			
(39-54) <b>E</b>			
(21-38) <b>F</b>			
(1-20) <b>G</b>			
<i>Not energy efficient - higher running costs</i>			
<b>England &amp; Wales</b>		EU Directive 2002/91/EC	