

CHESTERTONS



Ham Yard Residences

Soho, W1D 7AH

“A unique two or three bedroom duplex residence located in the heart of Soho with floor to ceiling windows, a large terrace, beautiful oak floors and access to incredible amenities at Ham Yard Hotel including 24 hour concierge and room service gym, spa and roof garden.”

Long let: £17,528 per week / £75,954.67 per month

2



2



1,506
sqft





Property Description

Located on the fifth and sixth floors, this two or three-bedroom duplex apartment offers the best of chic city living. This light and airy space showcases creative design by Kit Kemp, featuring bespoke fabrics and unique artwork. The residence provides a large private terrace with views across the rooftops of Soho, an open-plan living and dining room space, a sleek Boffi kitchen and comfortable king size bedrooms with en suite bathrooms.

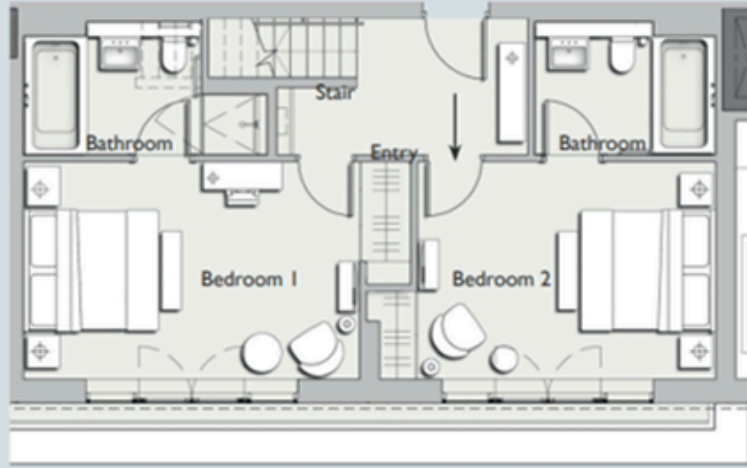
Warehouse-style windows flood the space with natural light. The bathrooms are designed in marble and oak and feature deep bath tubs and walk-in showers. There is also a powder room, ideal for guests.

Residents benefit from all of the hotel amenities which include 24-hour concierge, room service and daily housekeeping service, as well as facilities including a restaurant & bar, spa, gym, private event spaces, lounges, roof terrace, outside courtyard and a bowling alley. The residence can be accessed via the main hotel entrance or from a dedicated private entrance for the residences.

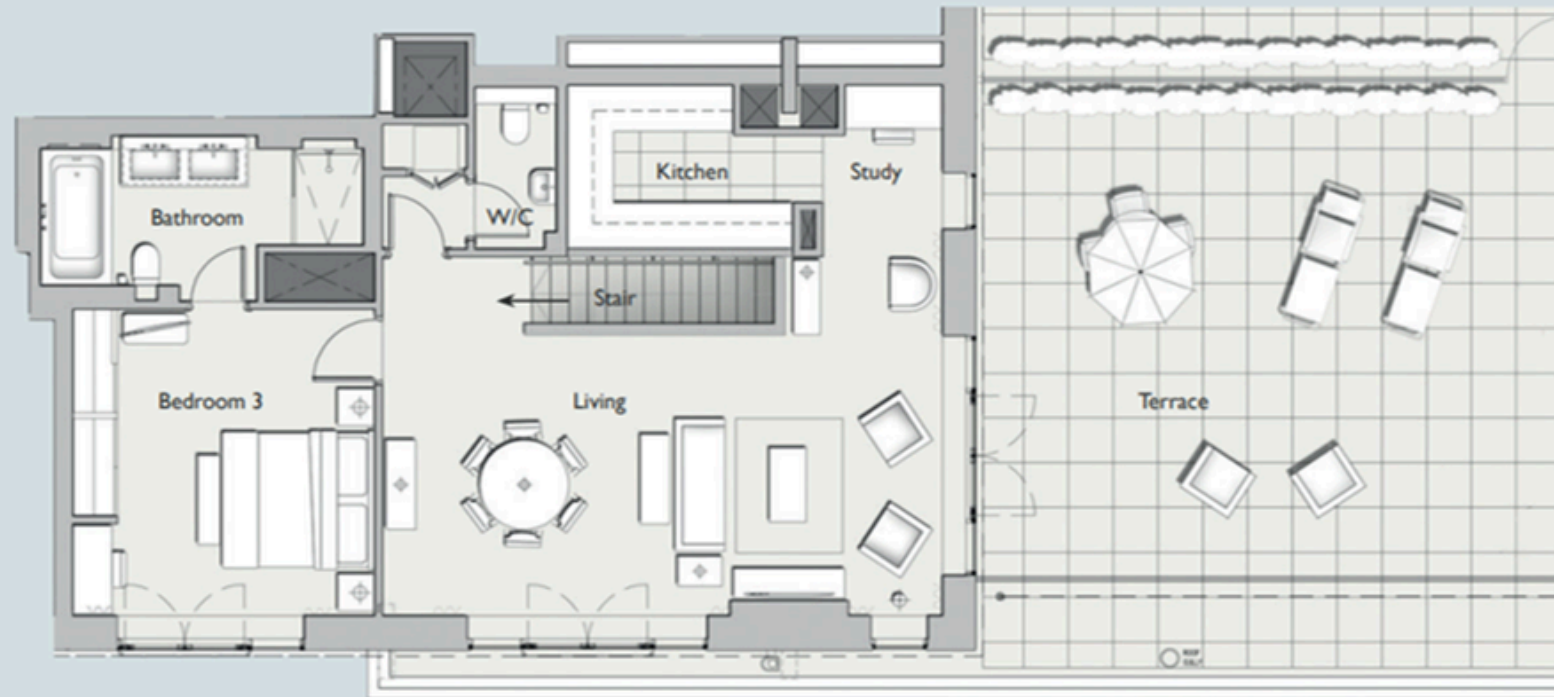








FLOORPLAN LOWER



FLOORPLAN UPPER