

FOR SALE



House - Detached (EPC Rating: D)

153 SHEPHERDS LANE, DARTFORD,
DA1 2PA

Guide Price

£1,200,000

BEXLEY HOMES



4 Bedroom House – Detached located in Dartford

Stunning Four-Bedroom Detached Family Home | High-Spec Finish | Very Large Garden & Ample Parking.

Positioned on one of the largest plots on Shepherds Lane, this exceptional four-bedroom detached family home offers approximately 2,646 sq ft of beautifully finished accommodation, combining generous proportions, high-end finishes and outstanding natural light throughout.

You are welcomed by a large entrance hallway, which leads through to the impressive open-plan kitchen, living and dining area. This stunning space features high-quality integrated appliances, top-end tiling, and striking glazed sections to the ceiling and roof, allowing natural light to flood the home throughout the day. Large glass patio doors open directly onto the garden, creating a seamless indoor-outdoor living experience.

The ground floor also benefits from a private reception room, ideal as a formal lounge, snug or home office, a separate utility room, and a stylish ground-floor bathroom.

On the first floor, there are four bedrooms and a modern family bathroom. The master bedroom features its own en-suite bathroom, alongside one generous double bedroom and two further well-proportioned bedrooms. Additional attic space is also available, offering excellent storage potential.

Externally, the property boasts a very large rear garden, ideal for families, featuring a patio area, children's play area, and a shed, with ample lawn space beyond. Side access connects the front and rear of the property. To the front, a private driveway provides parking for up to 4-5 vehicles, a rare and highly desirable feature.

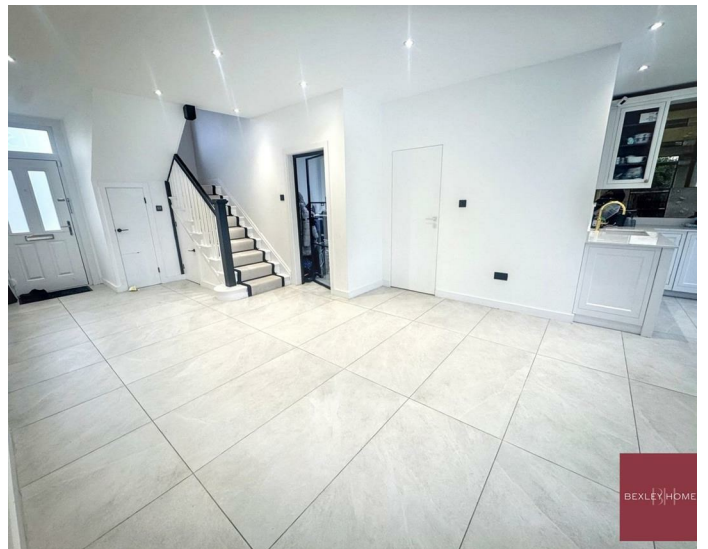
Ideally located within the catchment area for well-regarded local schools and close to amenities, transport links and green spaces, this outstanding home offers premium family living in a sought-after Dartford location.

Early viewing is highly recommended to fully appreciate the size, finish and plot on offer.

Contact Bexley Homes Today To Arrange A Viewing.



BEXLEY HOMES - SALES | UNIT C JARVIS & ROWELL BURNHAM ROAD,
DARTFORD, KENT, DA1 5BN

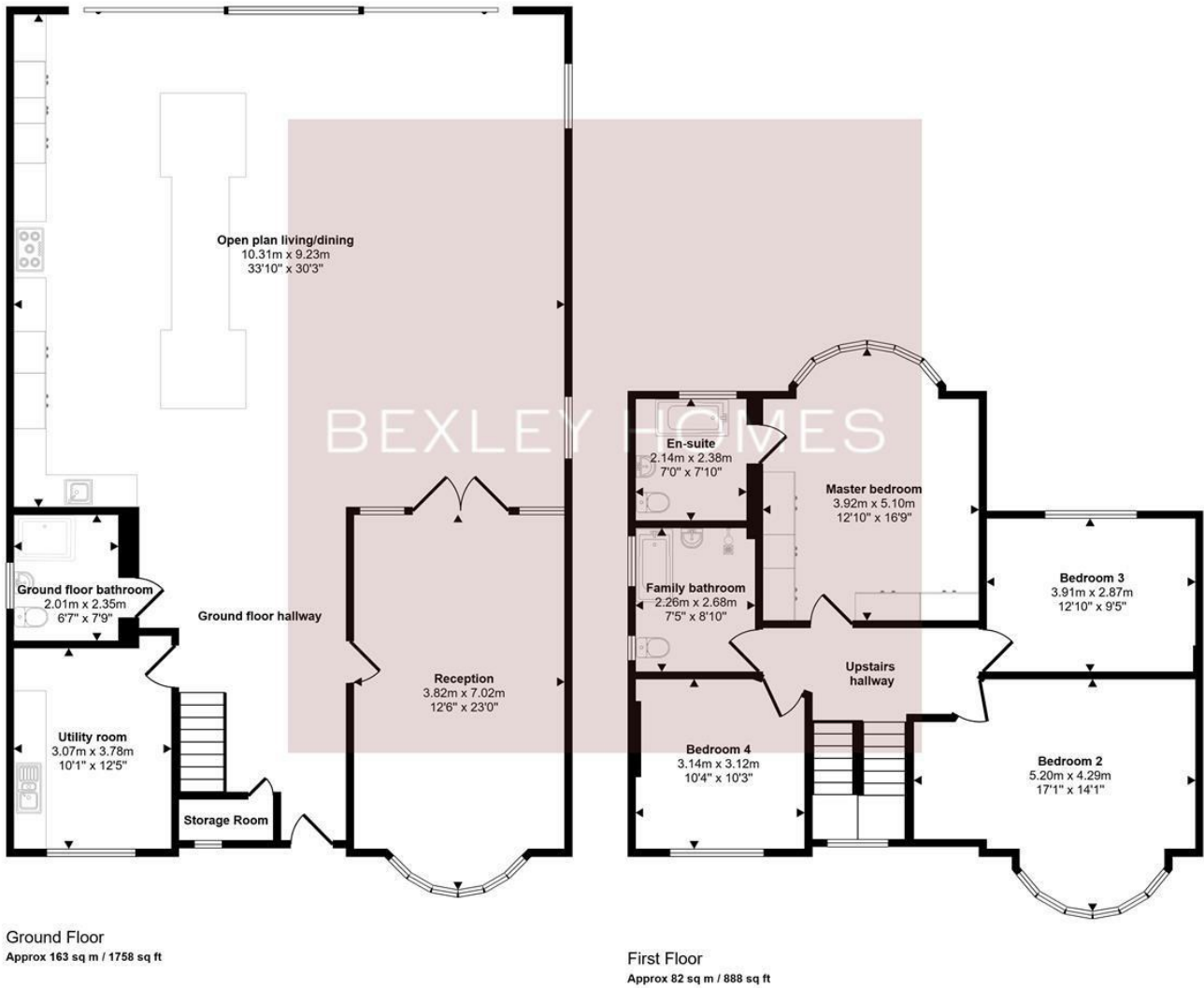


BEXLEY HOMES - SALES | UNIT C JARVIS & ROWELL BURNHAM ROAD, DARTFORD, KENT, DA1 5BN



BEXLEY HOMES - SALES | UNIT C JARVIS & ROWELL BURNHAM ROAD,
DARTFORD, KENT, DA1 5BN

Approx Gross Internal Area
246 sq m / 2646 sq ft

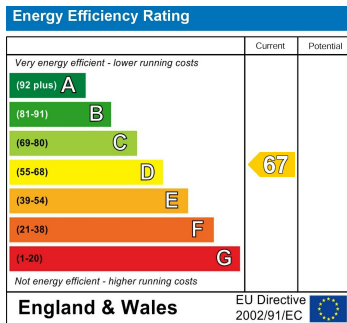


This floorplan is only for illustrative purposes and is not to scale. Measurements of rooms, doors, windows, and any items are approximate and no responsibility is taken for any error, omission or mis-statement. Icons of items such as bathroom suites are representations only and may not look like the real items. Made with Made Snappy 360.

Council Tax Band

F

Energy Performance Graph



Call us on

01322 948500

Belvedere@bexleyhomes.co.uk

Agents Note: Whilst every care has been taken to prepare these particulars, they are for guidance purposes only. All measurements are approximate and are for general guidance purposes only and whilst every care has been taken to ensure their accuracy, they should not be relied upon and potential buyers are advised to recheck the measurements.

BEXLEY HOMES