



Connells

Talbot Road North
Wellingborough



Property Description

*** WELL PRESENTED TWO BEDROOM SEMI-DETACHED BARRATT BUILT HOME.... Located less than 1 mile from the train station, this home is a must see, call now to arrange a viewing*** Benefiting from ground floor cloakroom, first floor bathroom and en-suite to bedroom one as well as enclosed rear garden and driveway.

Entrance Hall

Double glazed window and door to front elevation, cupboard and radiator.

Cloakroom

Low level WC and wash hand basin with tiling to water sensitive areas, radiator.

Lounge

Double glazed French doors to garden and double glazed windows to rear elevation, radiator.

Kitchen

Double glazed window to front elevation, fitted kitchen with a range of wall & base units with work surfaces over, stainless sink/drainer with tiling to water sensitive areas, electric oven and gas hob with cooker hood over, integrated dishwasher, fridge freezer and washing machine, radiator.

Landing

Loft access

Bedroom 1

Two double glazed windows to rear elevation, built in cupboard, radiator.

En Suite

Shower cubicle, Low level WC and wash hand basin with tiling to water sensitive areas, extractor fan, radiator.

Bedroom 2

Two double glazed windows to front elevation.

Bathroom

Double glazed window to side elevation, Bath, Low level WC and wash hand basin with tiling to water sensitive areas, extractor fan, radiator.

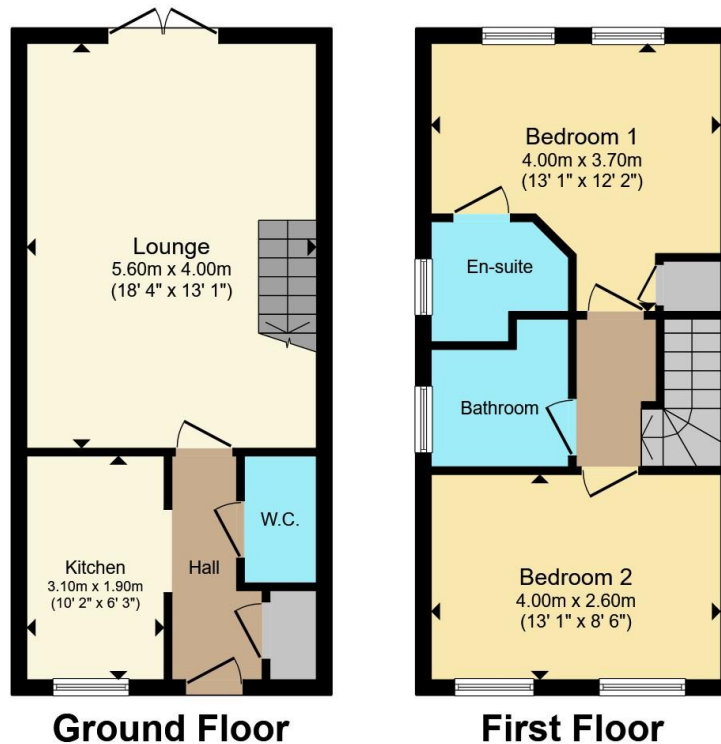
Rear Garden

Fully enclosed rear garden with lawn area and patio area.









Total floor area 70.4 m² (758 sq.ft.) approx

This floor plan is for illustrative purposes only. It is not drawn to scale. Any measurements, floor areas (including any total floor area), openings and orientation are approximate. No details are guaranteed, they cannot be relied upon for any purpose and they do not form part of any agreement. No liability is taken for any error, omission or misstatement. A party must rely upon its own inspection(s). Powered by www.propertybox.io



To view this property please contact Connells on

T 01933 312 363
E rushden@connells.co.uk

66 High Street
 RUSHDEN NN10 0PJ

EPC Rating: B Council Tax
 Band: B

Tenure: Freehold

view this property online connells.co.uk/Property/RDN406036



1. MONEY LAUNDERING REGULATIONS Intending purchasers will be asked to produce identification documentation at a later stage and we would ask for your co-operation in order that there will be no delay in agreeing the sale. 2. These particulars do not constitute part or all of an offer or contract. 3. The measurements indicated are supplied for guidance only and as such must be considered incorrect. Potential buyers are advised to recheck measurements before committing to any expense. 4. We have not tested any apparatus, equipment, fixtures, fittings or services and it is in the buyers interest to check the working condition of any appliances.

Connells Residential is registered in England and Wales under company number 1489613, Registered Office is Cumbria House, 16-20 Hockliffe Street, Leighton Buzzard, Bedfordshire, LU7 1GN. VAT Registration Number is 500 2481 05.

See all our properties at www.connells.co.uk | www.rightmove.co.uk | www.zoopla.co.uk

Property Ref: RDN406036 - 0009