



## Ilbert Street, W10

£575,000

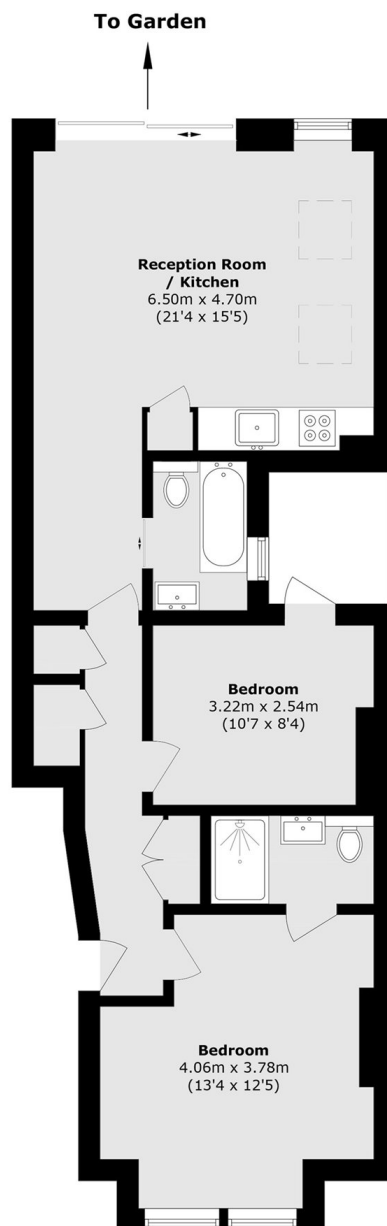
The property features a bright reception room with patio doors opening onto a private garden. An open-plan kitchen with integrated appliances flows seamlessly into the living space. There is a bay-fronted double bedroom with a stylish en-suite shower room, while a second double bedroom benefits from access to a private patio and is served by a contemporary family bathroom.

Ilbert Street is a quiet residential street close to Queen's Park, with its popular cafés, shops and gastropubs nearby. The amenities of Salusbury Road and Lonsdale Road are also within walking distance. Excellent transport links are available from Queen's Park (Overground and Bakerloo line, Zone 2) and Kensal Rise (Overground, Zone 2), providing easy access into Central London.

### Features

- Two Bedrooms
- Two Bathrooms
- Excellent Condition
- Private Garden
- Close to Amenities
- Chain Free

# Ilbert Street, London, W10



## Ground Floor

Total area (approx.): 58.8 sq. m (632.9 sq. ft)