



ZAFER CETINEL POWERED BY **exp** TM UK

@ zafer.cetinel@exp.uk.com

zafercetinel.exp.uk.com

01242 374 844

Swindon Lane, Cheltenham, GL50 4PB

£395,000

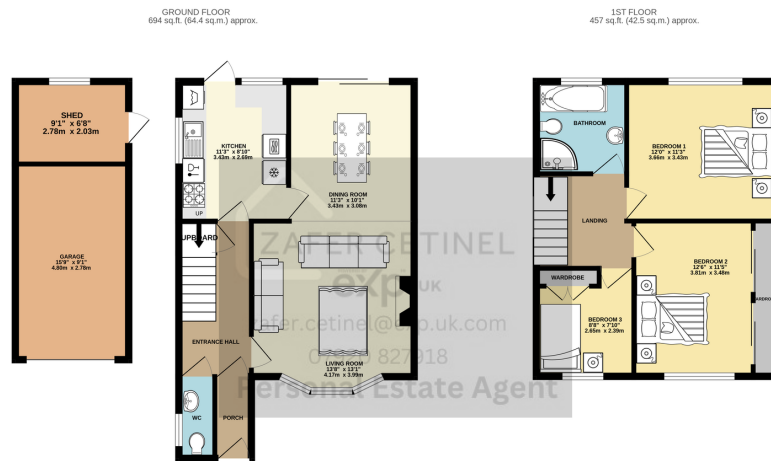
🛏️ 3 🚿 1 🚗 2



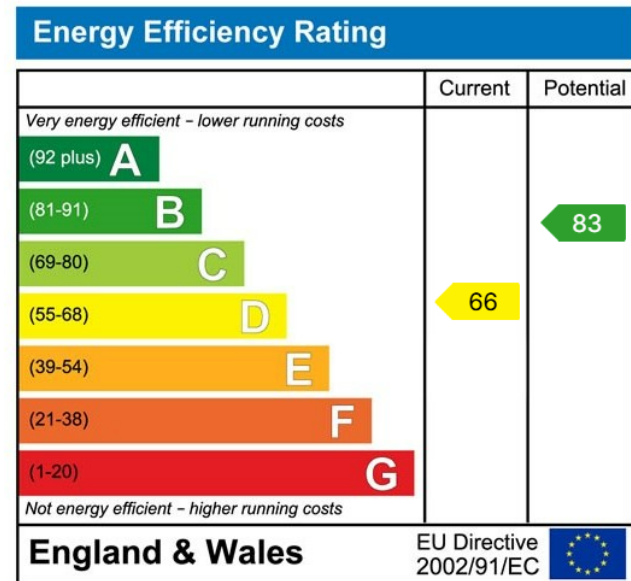
- SWINDON LANE, CHELTENHAM, NEAR RACECOURSE
- IMMACULATE CONDITION WITH HIGH END FINISHES
- STUNNING KITCHEN WITH ALL INTEGRATED NEFF APPLIANCES AND QUARTZ WORKTOPS
- MAKING UP A FOUR PIECE BATHROOM SUITE WITH A JACUZZI BATH
- ALL NEW WIRING, NEW HEATING SYSTEM AND UPGRADED INTERNET
- BEST GARDENS IN THE AREA OVER LOOKING TO THE FIELDS
- OPEN PLAN LOUNGE / DINER WITH A LOG BURNER
- THREE GOOD SIZE BEDROOMS
- GARAGE AND PARKING FOR TWO CARS
- REF ZAFER CETINEL



Charming three-bedroom semi-detached house on Swindon Lane, Cheltenham – minutes from the racecourse. Recently renovated to a high standard, the home offers an extended porch with downstairs WC, open-plan lounge/diner with log burner and engineered oak flooring, plus a contemporary kitchen with integrated appliances. Upstairs: three good-sized bedrooms (built-in wardrobes to bedrooms 1 & 3) and a four-piece bathroom. Outside: paved front parking, shared driveway, garage, shed and an exceptional rear garden extending over 100 ft with field views. Viewing recommended.



TOTAL FLOOR AREA - 1151 sq.ft. (106.9 sq.m.) approx.
 Whilst every attempt has been made to ensure the accuracy of the floorplan contained here, measurements of doors, windows, rooms and any other items are approximate and no responsibility is taken for any error, omission or mis-statement. This plan is for illustrative purposes only and should be used as such by any prospective purchaser. The services, systems and appliances shown have not been tested and no guarantee as to their operability or efficiency can be given.
 Made with Memphis 10/2021



eXp World UK Ltd is a registered company at Level 37, 25 Canada Square, London, E14 5LQ.

Registered company number is 12016573. VAT Registration Number is 327 4120 29