



Yerbury Road, N19

£675,000

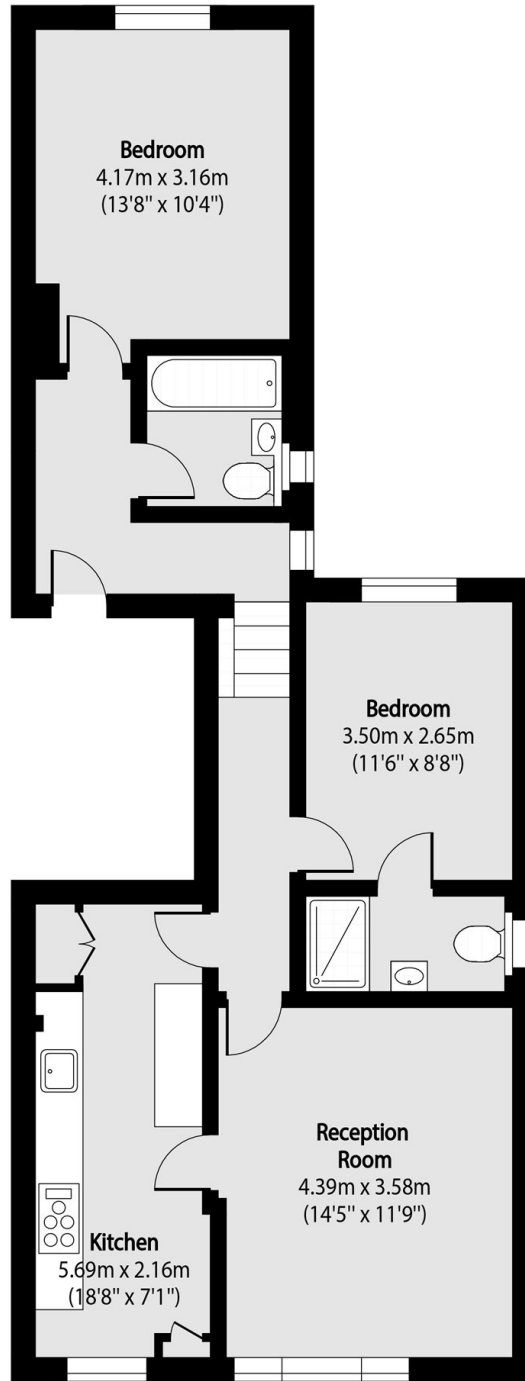
A beautifully presented and spacious first floor apartment offering two generous double bedrooms and two bathrooms. This property benefits from a secluded garden and will be sold with no onward chain.

Ideally located close to Tufnell Park station (Northern line), Upper Holloway (Overground), the diverse array of boutique shops and restaurants on Fortess Road, and in the catchment area of Yerbury Primary School.

Features

- Two Double Bedroom
- Two Bathrooms
- Secluded Garden
- Chain Free
- Yerbury Catchment
- Victorian Conversion

Yerbury Road, London, N19



Total area (approx): 71.07 sq m (765 sq. ft)