



15 Grosvenor Road
Banbury, Oxon, OX16 5HN



ROUND & JACKSON
ESTATE AGENTS





A very well presented three-bedroom Edwardian house which is conveniently located close to the town centre and train station. Available for sale with no onward chain.

The Property

15 Grosvenor Road, Banbury is a beautifully presented Edwardian property which is conveniently located close to the town centre, amenities and train station. The spacious accommodation is arranged over two floors and is well laid out with an entrance hallway, sitting room, dining room and kitchen on the ground floor. On the first floor there is a landing, three double bedrooms and a modern family bathroom. Outside of the property to the rear, there is an enclosed, low maintenance and private garden with side access leading to the front of the property. Parking is available on street where available and parking permits are available through the Cherwell District Council's website.

We have prepared a floorplan to show the room sizes and layout. Some of the main features include:

Entrance Hallway

Main door to the front, door into the dining room and access to the sitting room.

Dining Room

With ample space for a range of furniture, a central feature period fireplace with a bay window to the front aspect.

Sitting Room

With ample space for a range of furniture, a central fireplace, recessed cupboards, a window to the rear aspect and open doorway to the kitchen.

Kitchen

Fitted with a range of eye level cabinets with base units and drawers, work surfaces over and tiled splash backs. There is an inset sink and draining board, space and plumbing for a free standing washing machine and fridge/freezer, an integrated single over with a four-ring electric hob above and extractor hood. There is space for a small dining table and chairs, tiled flooring and dual aspect windows to the rear and side and door leading to the rear garden.

First Floor Landing

With doors to all first floor accommodation and airing cupboard which houses the boiler.

Bedroom One

A spacious double bedroom with a feature period fireplace and a window to the rear aspect.

Bedroom Two

A double bedroom with a feature period fireplace and a window to the front aspect.

Bedroom Three

A double bedroom with a window to the rear aspect.

Family Bathroom

Fitted with a modern white suite comprising a panelled bath with a rainfall shower and shower over, vanity unit, W.C., heated towel rail, attractive tiled splash backs and a window to the front aspect.



Outside

To the front of the property there is a short path with steps up to the front door and to the side there is access to the rear garden through a shared passageway. The main area of garden is located to the rear and is private and low maintenance. It is paved throughout with gravelled borders. Parking is available on street and resident parking permits can be purchased.

Situation

Banbury is conveniently located only 2 miles from junction 11 of the M40 putting Oxford (22 miles), Birmingham (43 miles), London (78 miles) and of course the rest of the motorway network within easy reach. There are regular trains from Banbury to London Marylebone (51 mins) and Birmingham Snow Hill (55mins). Birmingham International airport is 42 miles away for UK, European and New York Flights. Some very attractive countryside surrounds the Town and many places of historical interest are within easy reach.

Directions

From Banbury Cross proceed via the High Street and continue into George Street. Turn Right at the crossing into Newland Road then continue over the crossroads and take the second left hand turn into Grosvenor road. Number 15 will be found opposite the T-junction to the end of the terrace.



Services

All mains' services connected.

Local Authority.

Cherwell District Council. Tax band B.

Viewing arrangements

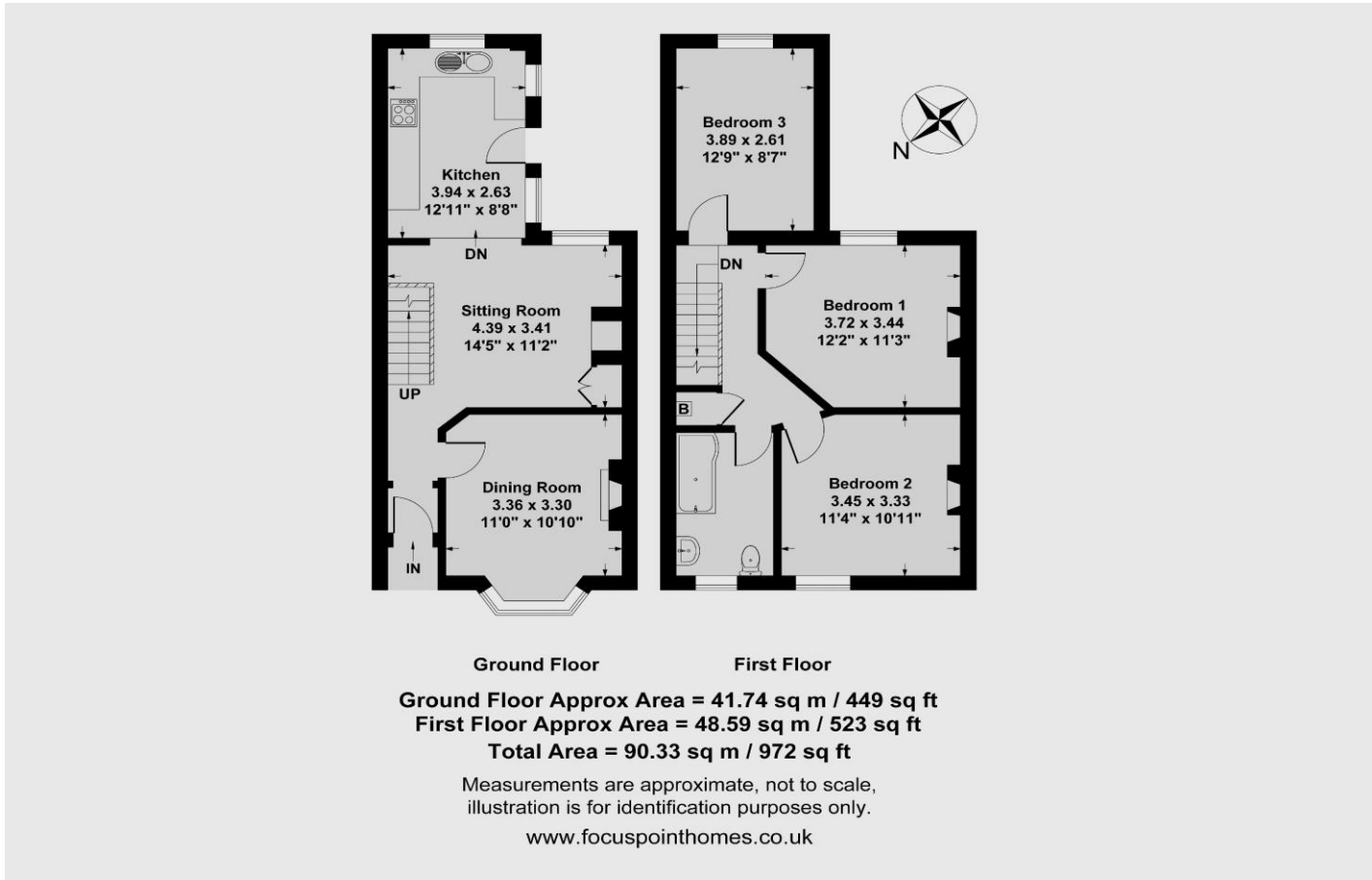
Strictly by prior arrangement with Round & Jackson.

Agents Notes

The current owners had the windows to the front of the house replaced in June 2026.

Asking Price: £295,000





IMPORTANT NOTE TO PURCHASERS: We endeavour to make our sales particulars accurate and reliable, however, they do not constitute or form part of an offer or any contract and none is to be relied upon as statements of representation or fact. The services, systems and appliances listed in this specification have not been tested by us and no guarantee as to their operating ability or efficiency is given. All measurements have been taken as guide to prospective buyers only, and are not precise. If you require clarification or further information on any points, please contact us, especially if you are travelling some distance to view.

Banbury - The Office, Oxford Road, Banbury, Oxon, OX16 9XA
 T: 01295 279953 E: office@roundandjackson.co.uk
 Bloxham – High Street, Bloxham, Oxon, OX15 4LU
 T: 01295 720683 E: office@roundandjackson.co.uk
www.roundandjackson.co.uk



ROUND & JACKSON
 ESTATE AGENTS

Property Misdescriptions Act 1991: The Agents have not tested any apparatus, equipment, fixtures and fittings, or services, so cannot verify that they are in working order or fit for the purpose. The buyer is advised to obtain verification from his or her professional buyer. References to the Tenure of the property are based on information supplied by the Vendor. The agents have not had sight of the title documents. The buyer is advised to obtain verification from their solicitor. You are advised to check the availability of any property before travelling any distance to view.