



## HAMILTON ROAD, SW19

£395,000

One bedroom apartment  
First floor  
Small modern development  
Underfloor heating  
No onward chain  
Energy rating: c



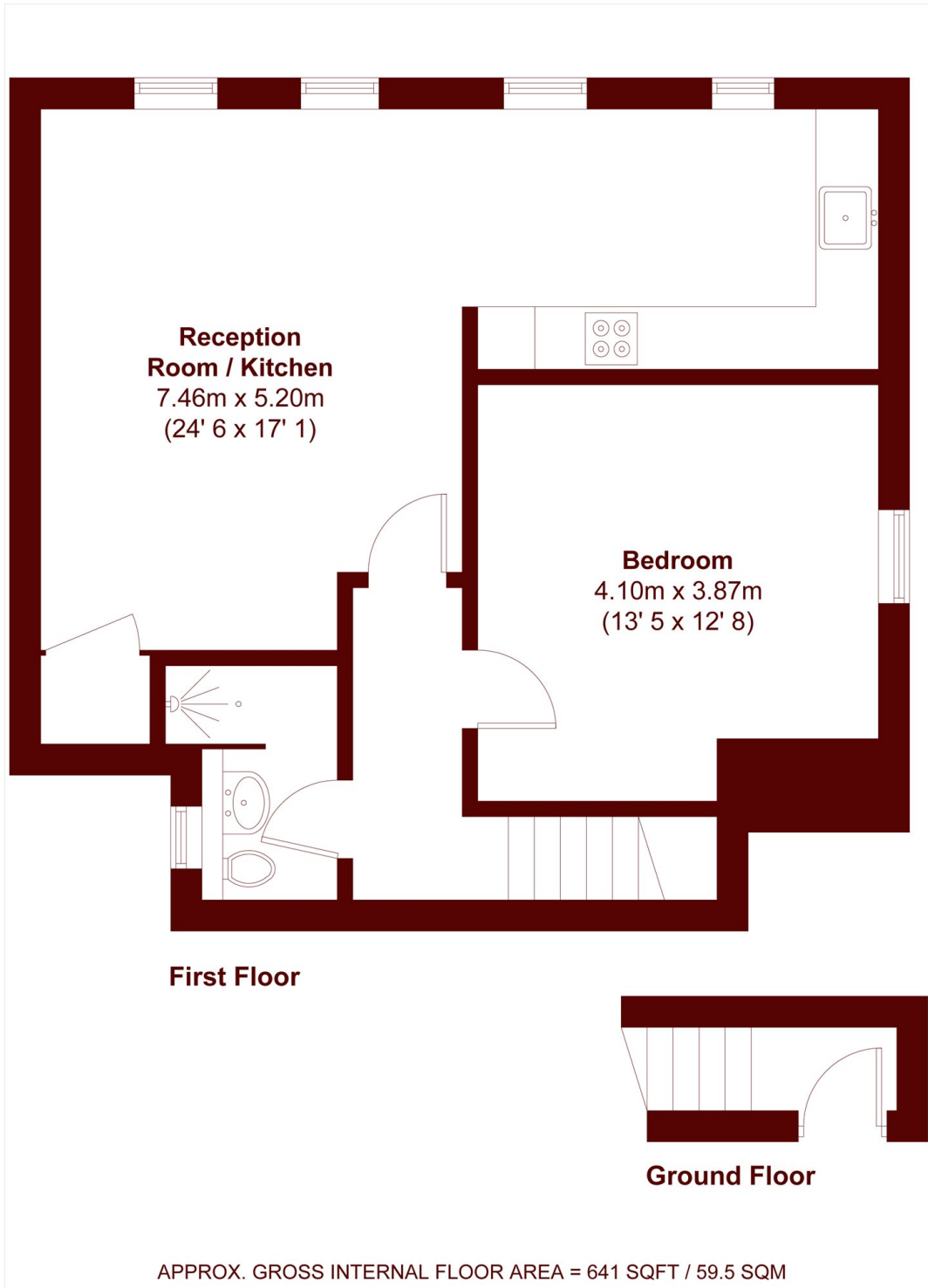
# ABOUT THE PROPERTY

A well-presented one bedroom apartment forming part of a select modern development, offering 641 sq ft of bright, contemporary accommodation finished to a high specification. Ideally suited to first-time buyers, professionals or investors.

The apartment is flooded with natural light due to extensive glazing, and features underfloor heating, Bosch integrated appliances and thoughtfully designed living space. The generous open-plan reception/kitchen provides an excellent area for both relaxing and entertaining, while the spacious double bedroom is complemented by a modern shower room/WC. NB: Photographs for information only as now furnished slightly differently.



# STEP INSIDE HAMILTON ROAD



Wimbledon  
020 8879 6660

Energy Rating: C We aim to make our particulars both accurate and reliable. However, they are not guaranteed; nor do they form part of an offer or contract. If you require clarification on any points then please contact us, especially if you're traveling some distance to view. Please note that appliances and heating systems have not been tested and therefore no warranties can be given as to their good working order

**MARSH &  
PARSONS**