



Newman Close, NW10

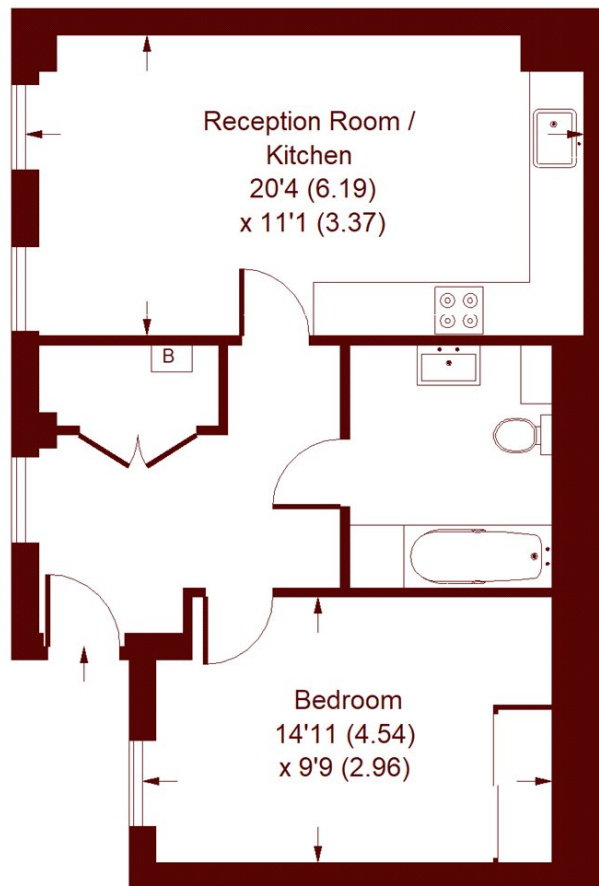
£1,800 pcm



- One Bedroom
- Ground floor
- Private Entrance
- Gated Parking
- New Build
- Willesden Green

Newman Close, NW10

APPROX. GROSS INTERNAL FLOOR AREA
549 SQFT / 51 SQM



GROUND FLOOR

Whilst every attempt has been made to ensure the accuracy of the floor plan, measurements are approximate and not to scale.
No guarantee is given on the total square footage of the property quoted on the plan. Figures given are for guidance.
Plan is for illustration purposes only, not to be used for valuations.

Marsh & Parsons Willesden Green

291-293 Willesden Lane,
London, NW2 5HY
020 8451 0420

We aim to make our particulars both accurate and reliable. However, they are not guaranteed; nor do they form part of an offer or contract. If you require clarification on any points then please contact us, especially if you're traveling some distance to view. Please note that appliances and heating systems have not been tested and therefore no warranties can be given as to their good working order.