



PERIOD
HOMES

Main Road, Howe Street. CM3 1BG

Guide Price £2,750,000

Nestled within a beautiful plot in the picturesque setting of Howe Street, The Mill House is an exceptional period residence extending to almost 6,200 sq ft, including an indoor pool complex, garaging, and annexe accommodation. Showcasing timeless character and refined interiors, this is an outstanding lifestyle opportunity within a prime Essex location.

Approached via a long gravel driveway and set amidst established boundaries, the property enjoys an imposing presence with beautifully manicured grounds, a charming mill pond, and mature landscaped gardens creating a truly idyllic setting.

Internally, the home has been sympathetically enhanced throughout whilst retaining an abundance of original character features including exposed beams, fireplaces and traditional detailing, all seamlessly combined with high-quality contemporary finishes.

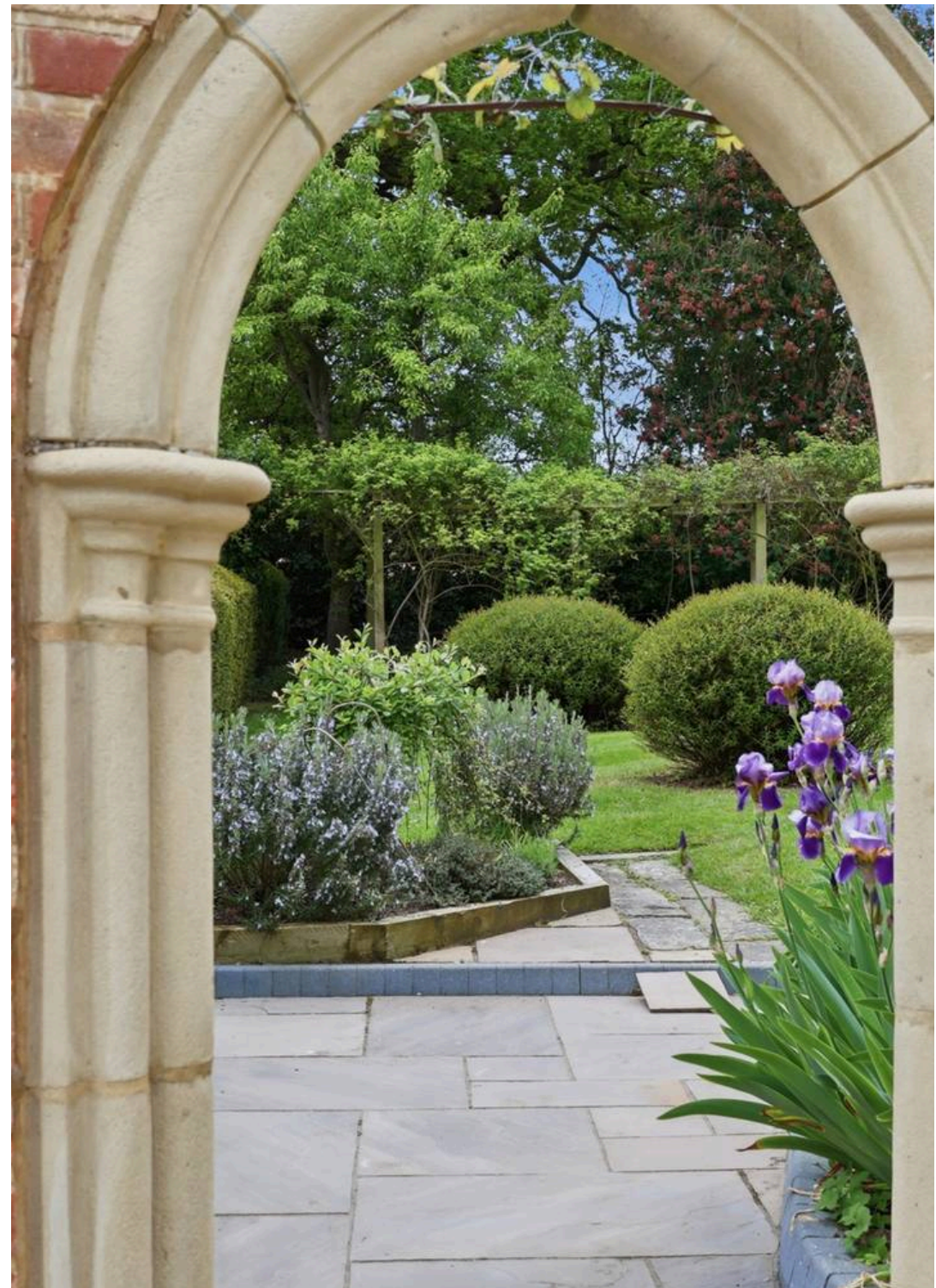
The ground floor offers an impressive arrangement of reception space ideally suited to modern family living and entertaining. A substantial drawing room provides an elegant principal reception area, complemented by a formal dining room, comfortable living room and separate study. The beautifully appointed kitchen/breakfast room forms the heart of the home, featuring bespoke cabinetry, quality integrated appliances and stylish finishes, with adjoining pantry and ancillary spaces adding further practicality.

The first floor hosts an impressive principal bedroom suite featuring a dressing room, luxurious en-suite and a private balcony enjoying views across the beautifully landscaped gardens. In addition, there are two further well-proportioned bedrooms, one benefitting from en-suite facilities, together with a stylishly appointed family bathroom. The accommodation continues onto the second floor where two additional bedrooms offer excellent versatility for growing families, guest accommodation or home office space.

A standout feature of the property is the exceptional leisure complex, comprising a superb indoor swimming pool with vaulted timber ceiling, changing facilities, kitchen, shower room and adjoining entertaining space, creating a remarkable wellness and recreational environment all year round. In addition, within the main house, a dedicated staircase leads to one bedroom annexe accommodation at first floor level.

Externally, the grounds are a particular feature of the property, offering expansive lawns, mature trees, tranquil water features and various seating and entertaining areas. There is an excellent range of outbuildings and garaging facilities, providing exceptional practicality and versatility. The grounds include a substantial detached double garage in addition to further garaging and dedicated storage buildings, ideal for car enthusiasts, workshop space or additional household storage requirements.

The extensive driveway offers ample parking for numerous vehicles, all set within the



Main Road

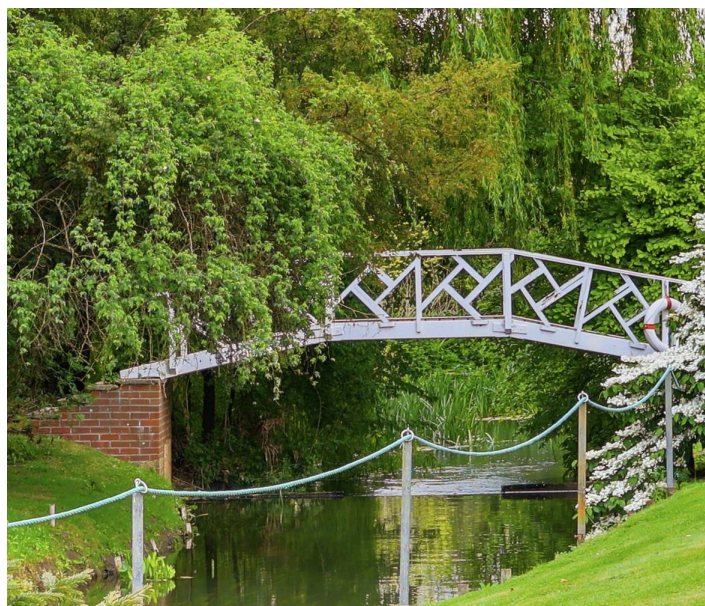
Howe Street, CM3 1BG

Occupying a magnificent plot within the picturesque semi-rural setting of Howe Street, The Mill House is an exceptional period residence extending to almost 6,200 sq ft, including an indoor pool complex, garaging, and annexe accommodation.

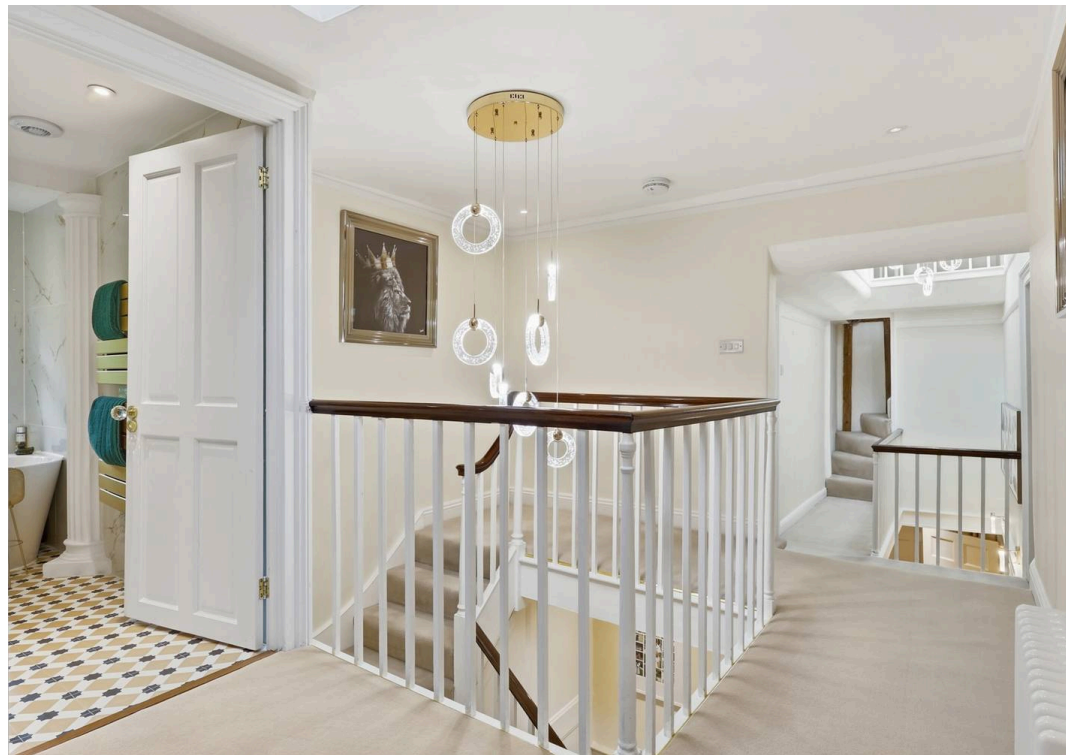
Council Tax band: E

Tenure: Freehold

- Exceptional detached period residence extending to almost 6200 sq ft
- Idyllic semi-rural setting with beautifully landscaped grounds
- Impressive indoor swimming pool complex
- Sweeping gated gravel driveway with ample parking and a range of outbuildings/garaging
- Luxurious principal suite with dressing room, en-suite and balcony
- Ideal for multi-generational family living with the benefit of a self-contained, one-bedroom annexe









The Mill House

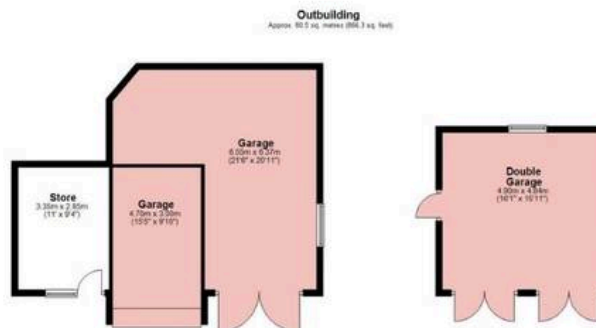
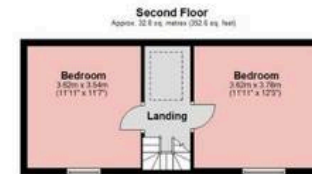
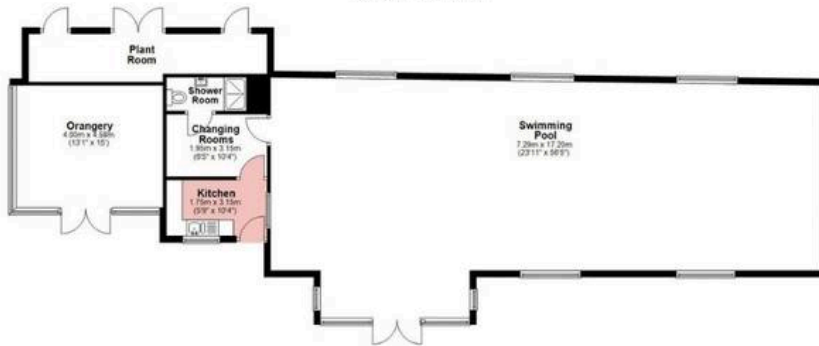
Total: Approx. Gross Internal Area 575.0 sq metres (6189.5 sq ft)



PERIOD
HOMES



Pool House
Approx. 154.8 sq. metres (1663.6 sq. feet)



Measurements are approximate and for illustration purposes only. While we do not doubt the accuracy and completeness, we advise you conduct a careful independent assessment of the property to determine monetary value

About Us

From charming cottages to country estates, all our homes have a story to tell... 'Period Homes' is one of a kind, an agency dedicated to the sale of character and period properties across Essex.

If you would like to buy a period home but you have a modern home to sell first, we can assist via our sister company, Walkers, which just so happens to have been voted Britain's Best Estate Agency in the British Property Awards. That way, both elements of your move are in the very best of hands.

Get In Touch



Browse Properties



PERIOD
HOMES



Psst... Have you heard of discreet marketing?

Many people lose out on their dream home to someone in a better position.

Often, it is because they have delayed putting their house on the market, preferring to find somewhere first and then sell.

That is why we have innovated a totally unique and highly confidential moving home solution to put you in a competitive position.

Let us find you a buyer without any advertising or pressure and without the neighbours knowing.

Your secret is safe with us...

Get in touch for a complimentary valuation.

Looking To Sell Or Let Your Home?

Book your free valuation to see how much your home is worth.

Contact Us

01277 288000



Our Website

periodhomes.co.uk



Our Address

Eaton House

High Street

Ingestone

CM4 9DW

