



# The Orchards, Mile Road, Widdrington, NE61 5QW

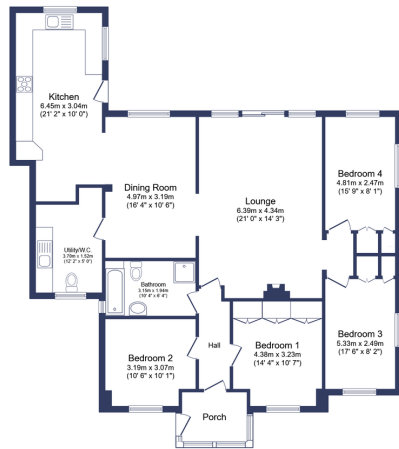
Offers Over £400,000

🛏️ 4 🚿 1 🚗 2

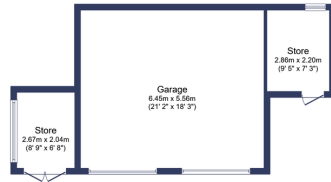


Discover this charming detached bungalow, ideally situated on a generous plot and offering spacious, versatile accommodation. The heart of the home is the expansive rear lounge, featuring a cosy log burner, perfect for relaxing evenings. Adjacent to this, a good-sized dining area provides an ideal setting for meals and entertaining. The well-equipped modern kitchen ensures a delightful cooking experience, complemented by a practical utility room and a convenient downstairs WC. This home boasts four well-proportioned bedrooms, providing comfortable private spaces for everyone. A four-piece family bathroom serves these bedrooms with ease. Externally, the property benefits from a detached garage and multi-car off-street parking. Enjoy the outdoors in the beautiful, large south-facing garden, offering a perfect sanctuary for relaxation and outdoor activities. This splendid home is nestled in beautiful surroundings with easy access to the coast.





**Floor Plan**  
Floor area 132.4 sq.m. (1,425 sq.ft.)



**Garage**  
Floor area 48.4 sq.m. (521 sq.ft.)

Total floor area: 180.8 sq.m. (1,947 sq.ft.)

This floor plan is for illustrative purposes only. It is not drawn to scale. Any measurements, floor areas (including any total floor area), openings and orientations are approximate. No details are guaranteed, they cannot be relied upon for any purpose and do not form any part of any agreement. No liability is taken for any error, omission or misstatement. A party must rely upon its own inspection(s). Powered by www.propertybox.co.uk



- Detached Bungalow
- Good Size Dining Area.
- Utility Room & Downstairs WC.
- Four Piece Family Bathroom.
- South Facing Large Garden.
- Spacious Rear Lounge With Log Burner.
- Well Equipped Modern Kitchen.
- Four Well Proportioned Bedrooms.
- Detached Garage & Multi Car Parking.
- Beautiful Surroundings & Near The Coast.

