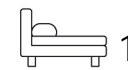




Living
made
better

Atrium Heights
Deptford, SE8 3FB



£2,000 PCM

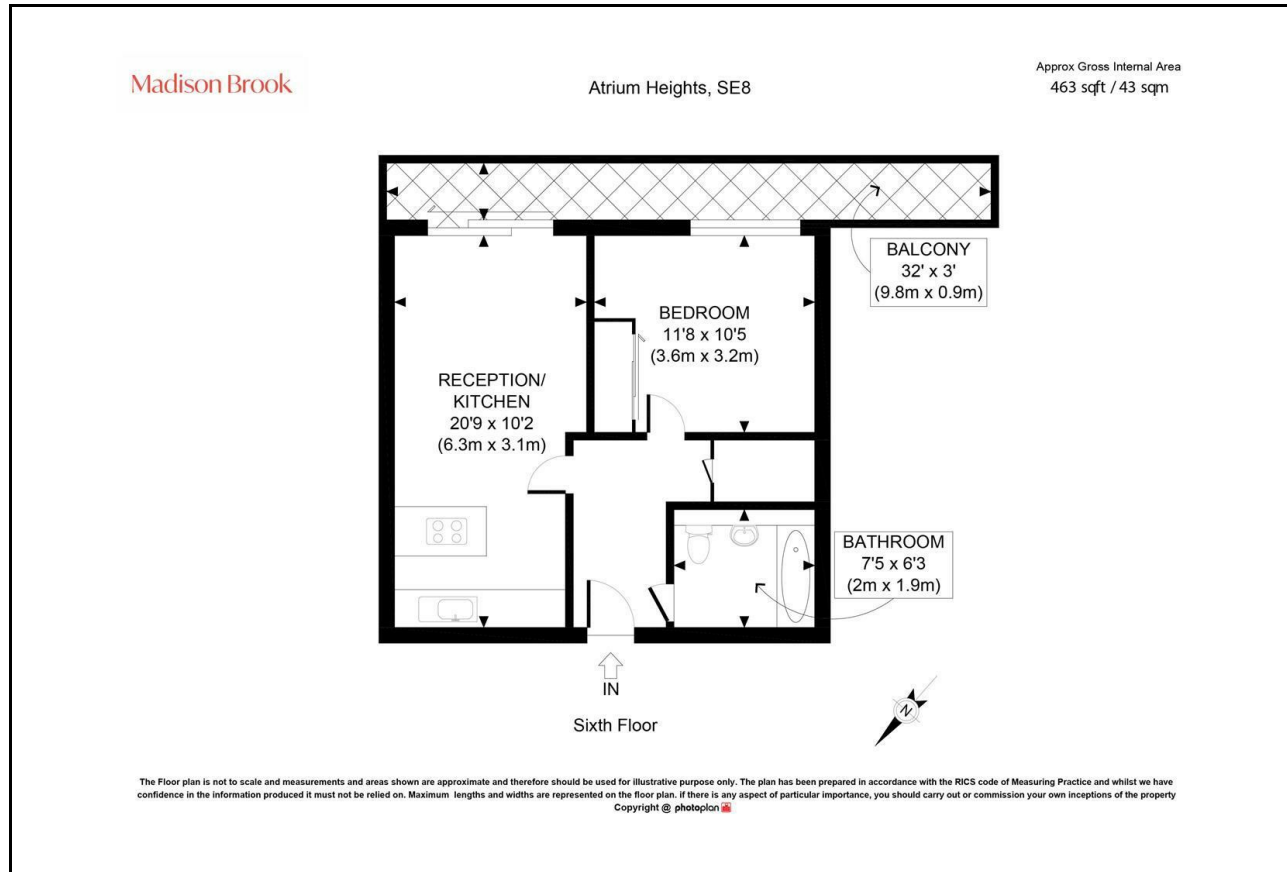
Atrium Heights, Deptford, SE8 3FB

Madison Brook

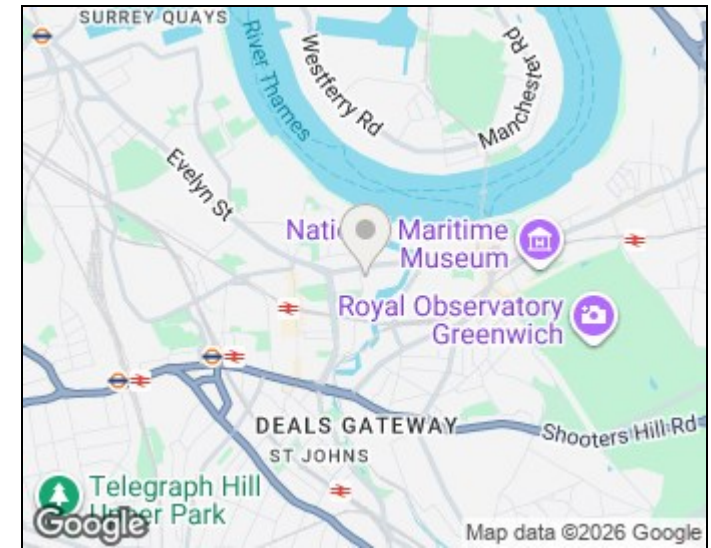
Property Summary

Stunning one bedroom apartment located on the 6th floor of this modern development in Atrium Heights. The apartment comprises a bright and airy, open plan reception featuring a fully fitted kitchen, a spacious master bedroom with ample built in wardrobe space and access to the private balcony with stunning views. The apartment further benefits from a three-piece family bathroom & a well proportioned storage cupboard in the hallway. The apartment benefits from being a short walk from Cutty Sark DLR & Greenwich mainline station, which offers superb transport links into Canary Wharf and the City. The development is also just a short walk from the local Waitrose Supermarket, Greenwich Town Centre & Greenwich Park.

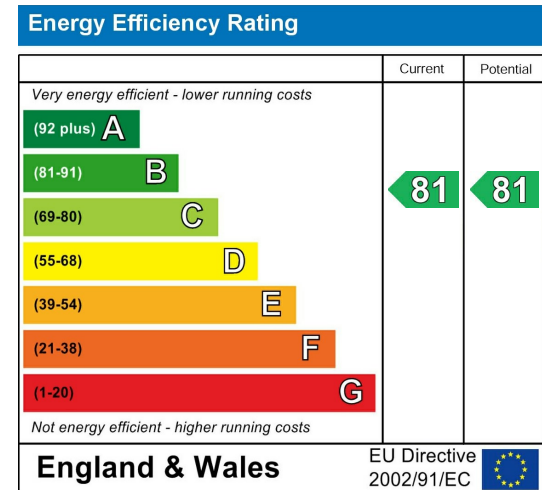
Floorplan



Area Map



Energy Efficiency Graph



These particulars, whilst believed to be accurate are set out as a general outline only for guidance and do not constitute any part of an offer or contract. Intending purchasers should not rely on them as statements of representation of fact, but must satisfy themselves by inspection or otherwise as to their accuracy. No person in this firm's employment has the authority to make or give any representation or warranty in respect of the property.

43 Loampit Vale, Lewisham, London, SE13 7FT

Tel: 020 3946 6200 Email:

lewisham@madisonbrook.com

<https://madisonbrook.com/>