



- Ground Floor Flat
- Laminate Floors
- Reposit Available
- EPC Rating E

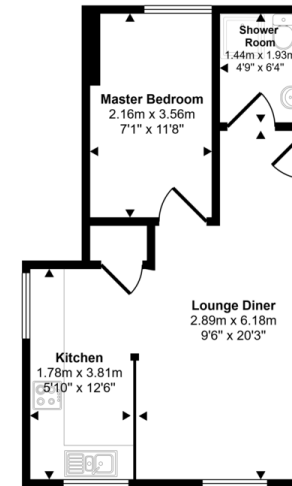
51 Kings Crescent, Edlington, Doncaster, DN12 1BD

£625 pcm

Available now is this stunning 1 bedroom ground floor apartment, fitted out to a high standard. Bright lounge and modern kitchen with built in electric hob, oven, and extract fan. Rear facing bedroom and adjacent shower room with w.c. wash hand basin and shower cubicle. The property is serviced by electricity for both heating and hot water and is close to local amenities. Parking is on the road to the front.



Approx Gross Internal Area
35 sq m / 377 sq ft



Floorplan

This floorplan is only for illustrative purposes and is not to scale. Measurements of rooms, doors, windows, and any items are approximate and no responsibility is taken for any error, omission or mis-statement. Icons of items such as bathroom suites are representations only and may not look like the real items. Made with Made Snappy 360.

Energy Efficiency Rating		Current	Potential
Very energy efficient - lower running costs			
(92-100)	A		
(81-91)	B		81
(69-80)	C		
(55-68)	D		
(39-54)	E	45	

Cotswold House First Floor, Bawtry Road, Wickersley, Rotherham, South Yorkshire, S66 2BL

www.bricknells-rentals.co.uk
01709 365584
enquiries@bricknells-rentals.co.uk

Agents Note: Whilst every care has been taken to prepare these particulars, they are for guidance purposes only. All measurements are approximate and for general guidance purposes only and whilst every care has been taken to ensure their accuracy, they should not be relied upon and potential buyers/tenants are advised to recheck the measurements