

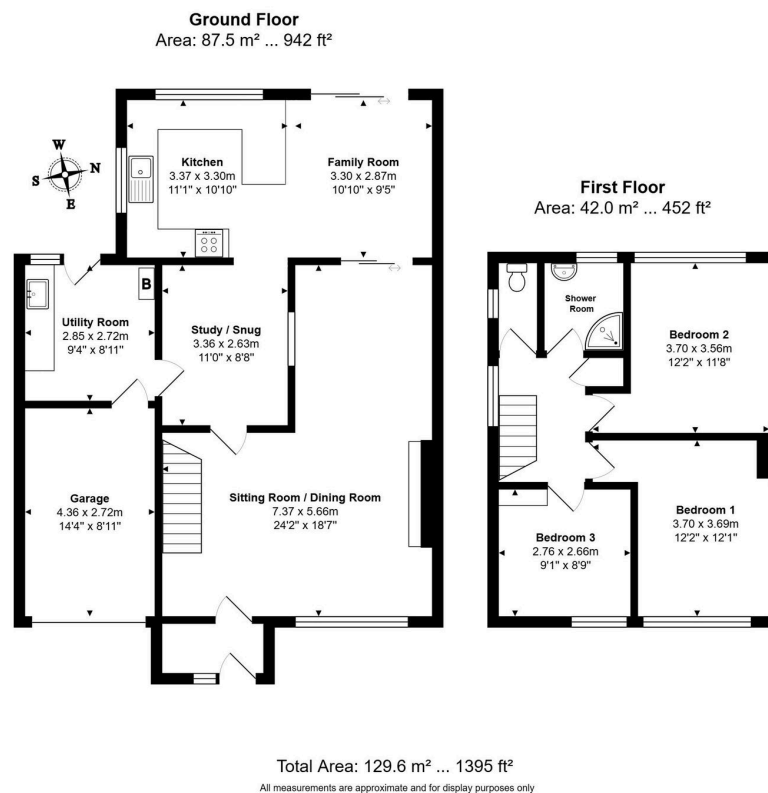
Parkway, St. Ives, PE27 5NS

Guide Price £375,000

3 1 2



- Extended three-bedroom semi with no forward chain
- Sitting room-dining room plus additional study or snug space
- Utility room plus integral garage for practical storage
- Driveway parking providing convenient off-road space
- Virtual tour available upon request
- Open-plan kitchen-family room with quality Bosch integrated appliances
- Freshly decorated and re-carpeted in recent months
- West-facing garden with established planting for excellent privacy
- Popular St Ives location south of St Audrey Lane
- EPC Rating D/58



If Calling to Enquire - Quote ref KP0855 - Parkway

Extended three-bedroom semi that's been updated throughout. Fresh décor, new carpets, and a fantastic kitchen-family room - ready to move straight in!