



BIRCH GROVE



1 Birch Grove, Eastleigh, SO50 4PY

£375,000

NO FORWARD CHAIN

Nestled in the sought-after area of Boyatt Wood, this well-presented three bedroom, two bathroom semi detached home offers a great balance of space and practicality across three floors. Tastefully maintained throughout, with minimal works required, it is ideal for buyers looking to move straight in.

Upon entering, you are welcomed by a spacious entrance hall. The ground floor features an open plan sitting/dining room, ideal for both everyday living and entertaining, along with a separate snug at the rear providing a cosy additional reception space. The kitchen is positioned at the front and is well laid out for day to day use.

ACCOMMODATION

Ground Floor

Entrance hall:

Stairs to first floor.

Sitting/dining room:

23'11" x 15'2" (7.29m x 4.63m) Doors to rear garden.

Snug:

9'1" x 7'10" (2.78m x 2.40m) Large storage cupboard.

Kitchen:

9'9" x 7'11" (2.98m x 2.41m) Range of units, including integrated fridge/freezer, dishwasher, as well as electric oven, gas hob with extractor over and space for a washing machine.

First Floor

Landing:

Storage cupboard and stairs to the second floor.

Bedroom 1:

14'4" into bay x 10'10" (4.38m into bay x 3.30m) Built in cupboard.

En-suite:

Shower cubicle, WC and wash basin.

Bedroom 3:

10'8" x 7'6" into bay (3.26m x 2.28m into bay)

Bathroom:

Suite comprising WC, wash basin and bath with shower over.

Second Floor

Bedroom 2:

10'11" x 9'1" (3.33m x 2.76m) Built-in cupboard.

Dressing room/Study:

9'1" x 6'11" (2.76m x 2.10m)

OUTSIDE

Front:

Lawn space and steps to front door.

Rear garden:

Large patio area, lawned space and gate to driveway in front of garage.

Garage:

16'3" x 8'0" (4.95m x 2.44m)

OTHER INFORMATION

Tenure:

Freehold

Approximate Age:

60's

Approximate Area:

1259 sq ft / 116.7 sq m

Sellers Position:

No forward chain

Heating:

Gas central heating

Windows:

UPVC double glazing

Infant/Junior School:

Shakespeare Infant School / Shakespeare Junior School

Secondary School:

Crestwood Community School

Local Council:

Eastleigh Borough Council - 02380 688000

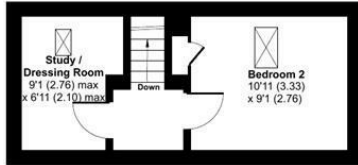
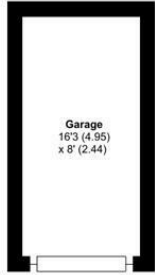
Council Tax:

Band C

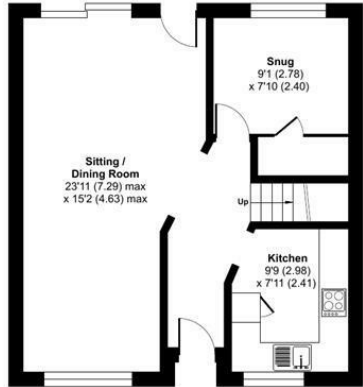
Agents Note:

If you have an offer accepted on a property we will need to, by law, conduct Anti Money Laundering Checks. There is a charge of £60 including vat for these checks regardless of the number of buyers involved.

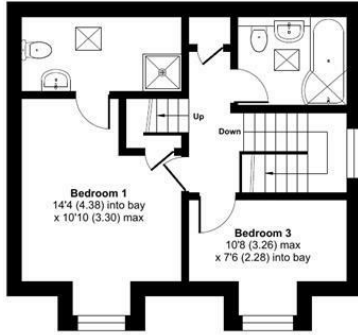
Ground Floor = 518 sq ft / 48.1 sq m
 First Floor = 412 sq ft / 38.2 sq m
 Second Floor = 200 sq ft / 18.5 sq m
 Garage = 129 sq ft / 11.9 sq m
 Total = 1259 sq ft / 116.7 sq m
 For identification only - Not to scale



SECOND FLOOR



GROUND FLOOR



FIRST FLOOR



| Energy Efficiency Rating | | Current | Potential |
|---|--|-------------------------|-----------|
| Very energy efficient - lower running costs | | | |
| (92 plus) A | | | |
| (81-91) B | | | |
| (69-80) C | | | |
| (55-68) D | | 59 | 66 |
| (39-54) E | | | |
| (21-38) F | | | |
| (1-20) G | | | |
| Not energy efficient - higher running costs | | | |
| England & Wales | | EU Directive 2002/91/EC | |

Floor plan produced in accordance with RICS Property Measurement 2nd Edition, Incorporating International Property Measurement Standards (IPMS2 Residential). © ritchiecom 2026. Produced for Sparks Ellison. REF: 1449086

94 Winchester Road, Chandler's Ford, Hampshire, SO53 2GJ

Sales: t: 02380 255333 e: property@sparksellison.co.uk

Lettings: t: 02380 018518 e: lettings@sparksellison.co.uk

While we endeavour to make our sales particulars fair, accurate and reliable, they are only a general guide to the property and, accordingly, if there is any point which is of particular importance to you please contact the office and we will be pleased to check it for you, especially if you are contemplating travelling some distance to view the property. These approximate room sizes are only intended as general guidance. You must verify the dimensions carefully before ordering carpets or any built in furniture. Please note we have not tested the services or any of the equipment or appliances in this property, accordingly we strongly advise prospective buyers to commission their own survey or service report before finalising their offer to purchase. These particulars are issued in good faith but do not constitute representations of fact or form part of any offer or contract. The matters referred to in these particulars should be independently verified by prospective buyers or tenants. Neither Sparks Ellison nor any of its employees or agents has any authority to make or give any representation or warranty whatever in relation to this property. Your home is at risk if you do not keep up repayments on a mortgage or other loan secured on it. Written quotations available on request. All loans secured on property. Life assurance usually required.



