



Cawthorn Apartments  
Fulham High Street, SW6









A stylish and very bright, luxury split level Penthouse apartment, arranged as a 24ft reception/dining/kitchen space with terrace over looking Bishops Park allotments, three double bedrooms with built in wardrobes, two bathrooms and cloakroom.

The property benefits from comfort cooling, secure underground parking, concierge and lift access.

Cawthorn Apartments (built circa 2018) is perfectly located on Fulham High Street which provides immediate access to shopping facilities and Putney Bridge underground station (District Line). The famous Bishops Park is also just around the corner.

- Luxury split level Penthouse apartment
- 24ft reception/dining/kitchen space, roof terrace
- Three double bedrooms, two bathrooms
- Comfort cooling, parking, concierge, lift

Asking Price £1,750,000

Score	Energy rating	Current	Potential
92+	A		
81-91	B	85 B	85 B
69-80	C		
55-68	D		
39-54	E		
21-38	F		
1-20	G		

**Tenure:** Share of Freehold 991 years 1 months  
**Service Charge:** £11000  
**Ground Rent:** £450  
**Local Authority:** Hammersmith & Fulham  
**Council Tax Band:** G

**Chestertons Fulham Road Sales**

654 Fulham Road  
 Fulham  
 London  
 SW6 5RU

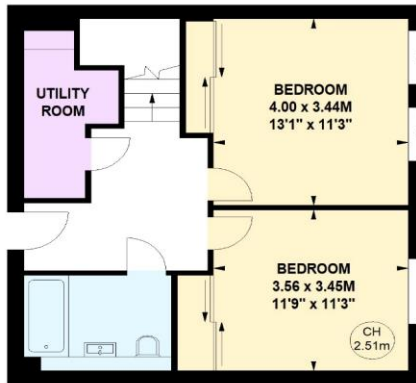
fulham@chestertons.co.uk  
 020 7384 9898

## Cawthorn Apartments, SW6

Approximate gross internal area  
136.84 sq m / 1473 sq ft



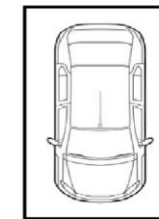
Key :  
CH - Ceiling Height



**Fifth Floor**



**Sixth Floor**



**Parking Space**

The floor plan is not to scale and measurements and areas shown are approximate and therefore should be used for illustrative purposes only.  
The plan has been prepared in accordance with the RICS code of Measuring Practice and whilst we have confidence in the information produced, it must not be relied on.  
If there is any aspect of particular importance, you should carry out or commission your own inspection of the property.

