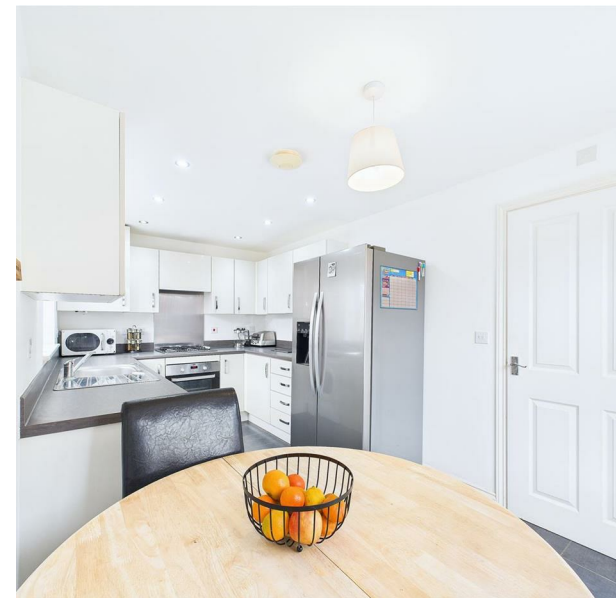


Oakway Drive, Woodville, Swadlincote, DE11 8FZ

£230,000

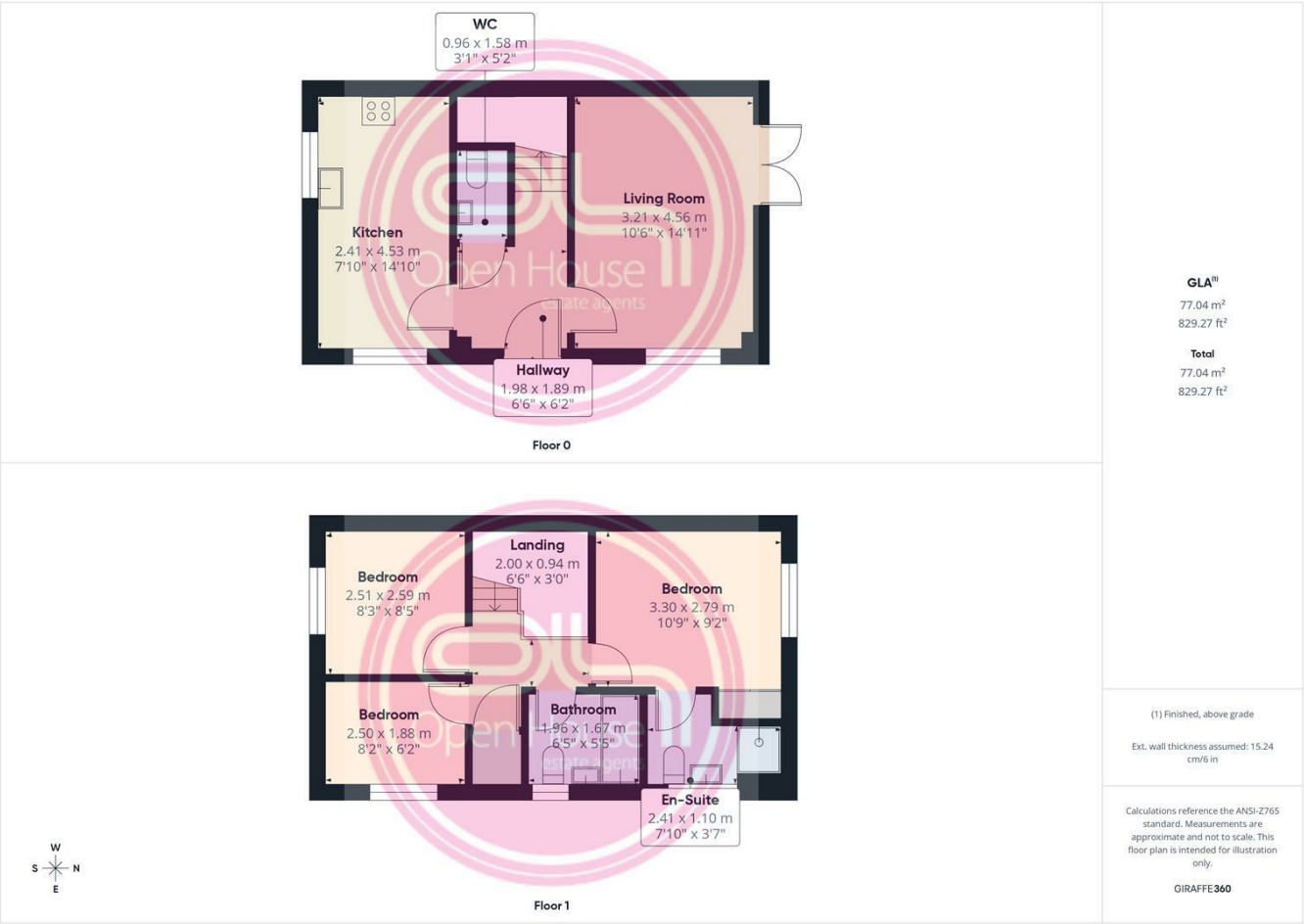
Council Tax Band: B



Set within a sought-after modern development in Woodville, this attractive three-bedroom home offers bright, well-planned accommodation that is ideal for first-time buyers, young families or downsizers wanting something ready to move into. The property combines a spacious dining kitchen, a generous rear living room and three comfortable bedrooms (including an en-suite main bedroom), together with a low-maintenance garden and two allocated parking spaces. Local shops, schools and everyday amenities are all close at hand, with Swadlincote, Burton upon Trent and Ashby-de-la-Zouch easily reached by road or bus.



Open House Burton & Swadlincote



Energy Efficiency Rating		
	Current	Potential
Very energy efficient - lower running costs		
(92 plus) A		95
(81-91) B	83	
(69-80) C		
(55-68) D		
(39-54) E		
(21-38) F		
(1-20) G		
Not energy efficient - higher running costs		
England & Wales	EU Directive 2002/91/EC	