



## Haslemere Road, Southsea, PO4 9AN

### Asking Price £415,000

GD3 Property are please to offer to the market this beautiful, four-bedroom townhouse in Southsea which is a perfect family home.

The property features a recently refurbished master suite, complete with a modern en-suite, bathroom and a spacious dressing room. There are two additional generous sized double bedrooms with a further small double bedroom, all served by a family bathroom and an additional separate WC/Utility Room. The kitchen provides ample space for a dining table and chairs, making it perfect for everyday family living and entertaining. The home further benefits from two reception rooms, and an office offering flexible living.

Situated in a sought-after area of Southsea, the property is close to schools, is 0.9 miles from the seafront and has on street permit parking is available. Overall, this is a spacious, attractive and high specification home with a recently upgraded master suite, ready to move into.

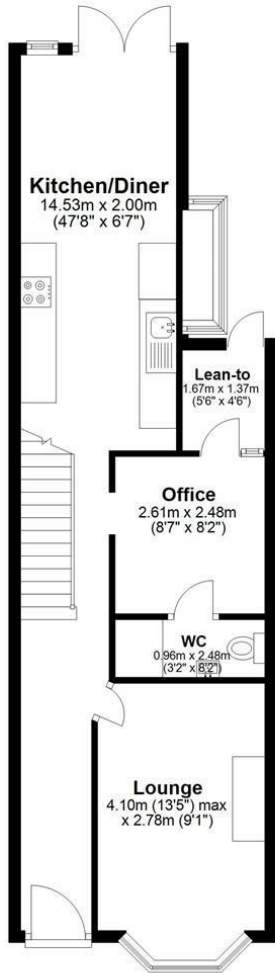
#### Disclaimer

All dimensions are approximate and are quoted for guidance only, their accuracy cannot be confirmed. Reference to appliances and / or services does not imply they are necessarily in working order or fit for the purpose. Buyers are advised to obtain verification from their Solicitors as to the freehold / Leasehold status of the property, the position regarding any fixtures and fittings and where the property has been extended / converted as to Planning Approval and Building Regulations compliance. These particulars do not constitute or form part of an offer or contract, nor may they be regarded as representations. All interested parties must, themselves verify their

**Haslemere Road, Southsea, PO4 9AN**

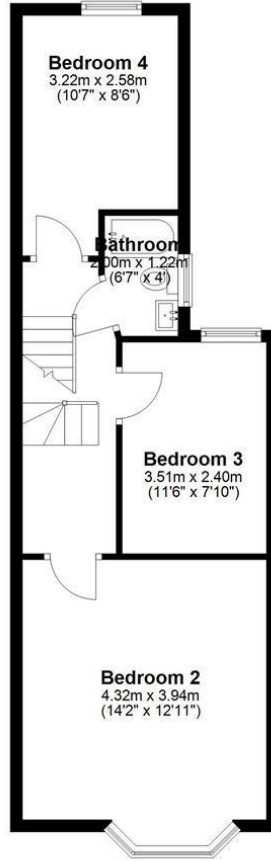
### Ground Floor

Approx. 53.0 sq. metres (570.8 sq. feet)



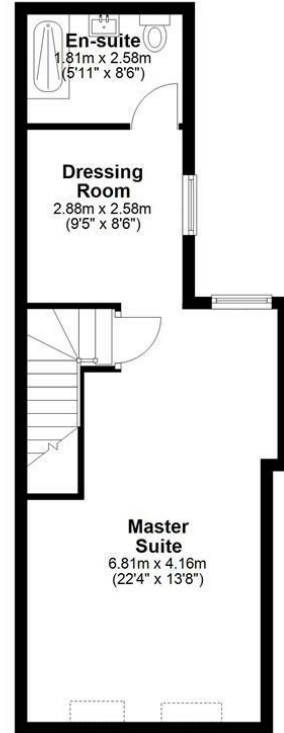
### First Floor

Approx. 45.9 sq. metres (493.9 sq. feet)



### Second Floor

Approx. 37.8 sq. metres (407.0 sq. feet)



Total area: approx. 136.7 sq. metres (1471.6 sq. feet)

