



18 Buttercup Drive, Christchurch BH23 4TY

£350,000

Mitchells

1963 — TODAY



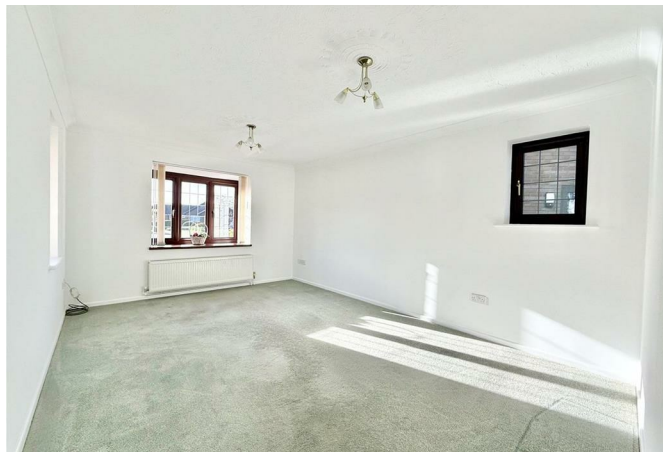
Buttercup Drive, Christchurch

A very smart, semi-detached bungalow approaching 900sq ft with a well maintained large garden on the highly sought after Hoburne Farm Development.



The Property

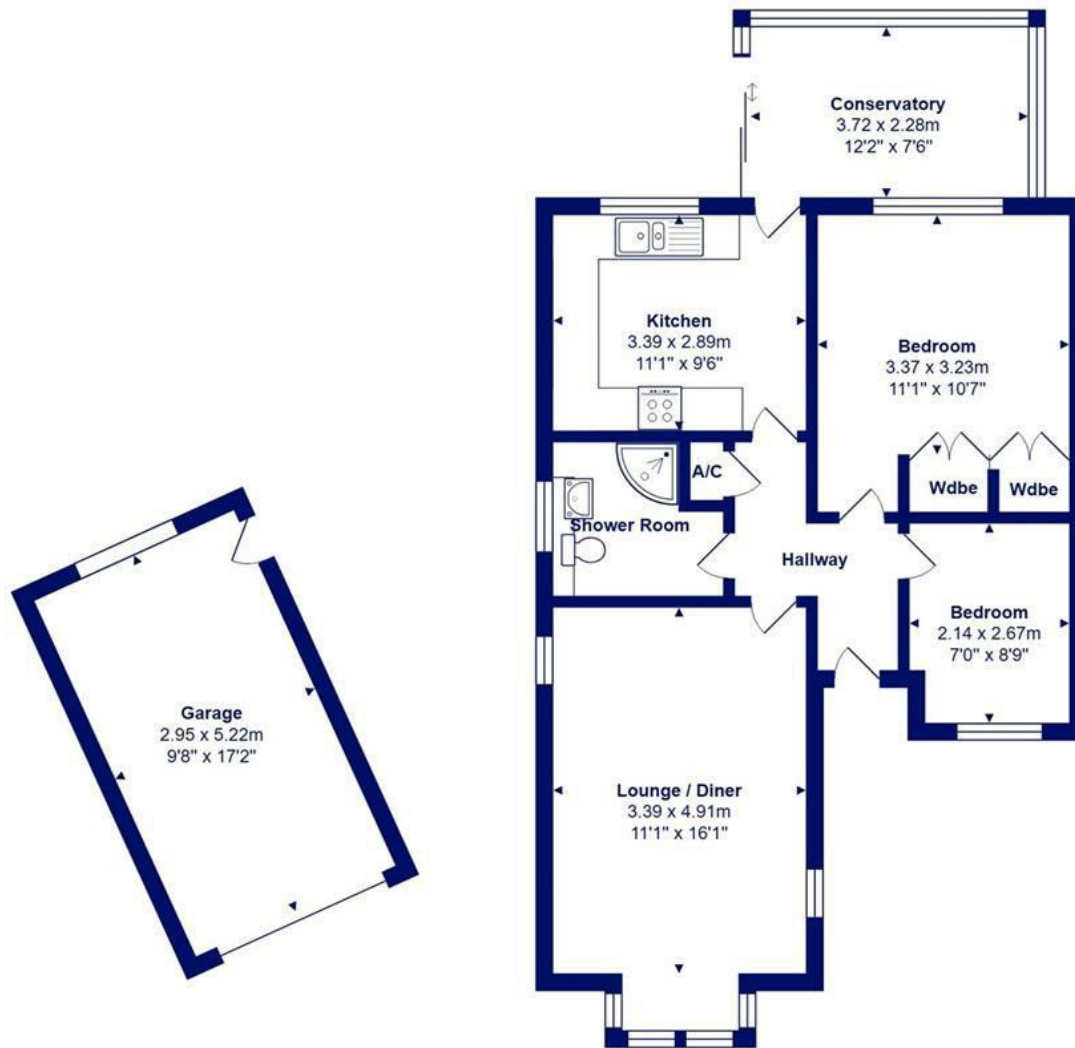
- A well presented semi detached bungalow
- Two bedrooms, main with built-in wardrobes
- Fully tiled family shower room
- Smart, well modernised kitchen with outlook & access to the rear garden
- Conservatory extension
- Larger than usual plot/garden
- Single garage and off-road parking
- Excellent scope to extend (STPP)
- Popular Hoburne Farm development within walking distance of Friars Cliff & Sainsbury's superstore
- Offered chain free





Location





Total Area: 83.3 m² ... 897 ft²
 All measurements are approximate and for display purposes only







www.mitchells.uk.com
Highcliffe@mitchells.uk.com
01425 272206

Highcliffe
284 Lymington Road
Highcliffe
Christchurch
BH23 5ET

