



Westworth House Down Place, London, W6 9JH

Welcome to

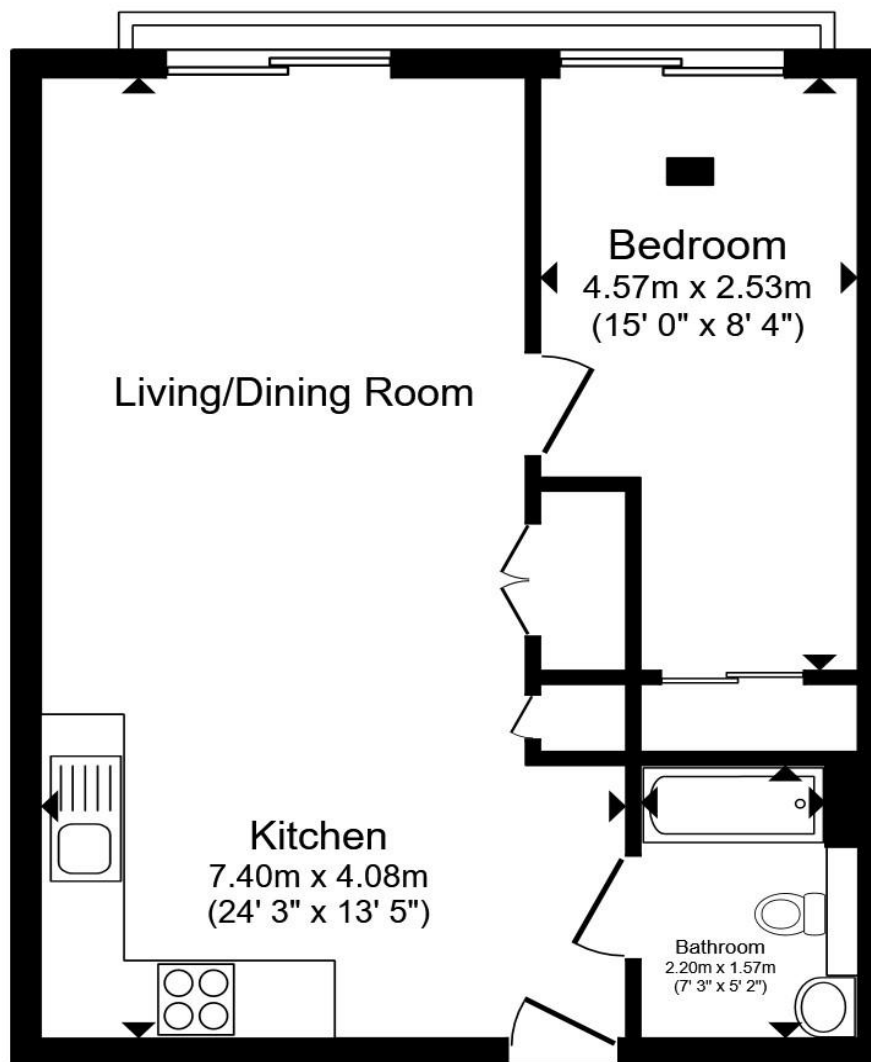
Westworth House Down Place, London

This well presented and modern one bedroom apartment is ideally located for the amenities and transport links Hammersmith has to offer, the flat is beautifully maintained, offering circa 465sq ft in size and benefits from a Juliet balcony.

Situated in the heart of Hammersmith, Westworth House is just moments from the River Thames, Chiswick High Road and Kensington High Street. This vibrant location is within easy reach of scenic walks, popular bars, cafés and restaurants.

Conveniently located just 0.3 miles from Ravenscourt Park underground station (District line) and 0.3 miles from Hammersmith Broadway and underground station (serving Piccadilly, District, Circle, and Hammersmith & City lines). The Piccadilly line ensures direct access to Heathrow Airport. Additionally, the A4/M4 arterial road provides easy accessibility to the West End (6 miles), Heathrow Airport, and the M25.





Total floor area 43.6 m² (469 sq.ft.) approx

This floor plan is for illustrative purposes only. It is not drawn to scale. Any measurements, floor areas (including any total floor area), openings and orientation are approximate. No details are guaranteed, they cannot be relied upon for any purpose and they do not form part of any agreement. No liability is taken for any error, omission or misstatement. A party must rely upon its own inspection(s). Powered by www.propertybox.io

Welcome to

Westworth House Down Place, London

- Modern & Contemporary
- Open Plan Reception/Kitchen
- Juliet Balcony
- Excellent Transport Links
- Close To The River

Tenure: Leasehold EPC Rating: D

Council Tax Band: D Service Charge: 4360.00

Ground Rent: 450.00

This is a Leasehold property with details as follows; Term of Lease 999 years from 25 Dec 2015. Should you require further information please contact the branch. Please Note additional fees could be incurred for items such as Leasehold packs.

This well presented and modern one bedroom apartment is ideally located for the amenities and transport links Hammersmith has to offer, the flat is beautifully maintained, offering circa 465sq ft in size and benefits from a Juliet balcony.

Guide price £420,000



view this property online [barnardmarcus.co.uk/Property/WKT107620](https://www.barnardmarcus.co.uk/Property/WKT107620)



Property Ref:
WKT107620 - 0003

1. MONEY LAUNDERING REGULATIONS Intending purchasers will be asked to produce identification documentation at a later stage and we would ask for your co-operation in order that there is no delay in agreeing the sale. 2. These particulars do not constitute part or all of an offer or contract. 3. The measurements indicated are supplied for guidance only and as such must be considered incorrect. Potential buyers are advised to recheck measurements before committing to any expense. 4. We have not tested any apparatus, equipment, fixtures or services and it is in the buyers interest to check the working condition of any appliances. 5. Where an EPC, or a Home Report (Scotland only) is held for this property, it is available for inspection at the branch by appointment. If you require a printed version of a Home Report, you will need to pay a reasonable production charge reflecting printing and other costs. 6. We are not able to offer an opinion either written or verbal on the content of these reports and this must be obtained from your legal representative. 7. Whilst we take care in preparing these reports, a buyer should ensure that his/her legal representative confirms as soon as possible all matters relating to title including the extent and boundaries of the property and other important matters before exchange of contracts.

Barnard Marcus is a trading name of Sequence (UK) Limited which is registered in England and Wales under company number 4268443, Registered Office is Cumbria House, 16-20 Hockliffe Street, Leighton Buzzard, Bedfordshire, LU7 1GN. VAT Registration Number is 500 2481 05.



barnard marcus



020 7603 1384



WestKensington@barnardmarcus.co.uk



66 - 68 Shepherds Bush Road, West
Kensington, LONDON, W6 7PH



[barnardmarcus.co.uk](https://www.barnardmarcus.co.uk)

Please note the marker reflects the
postcode not the actual property