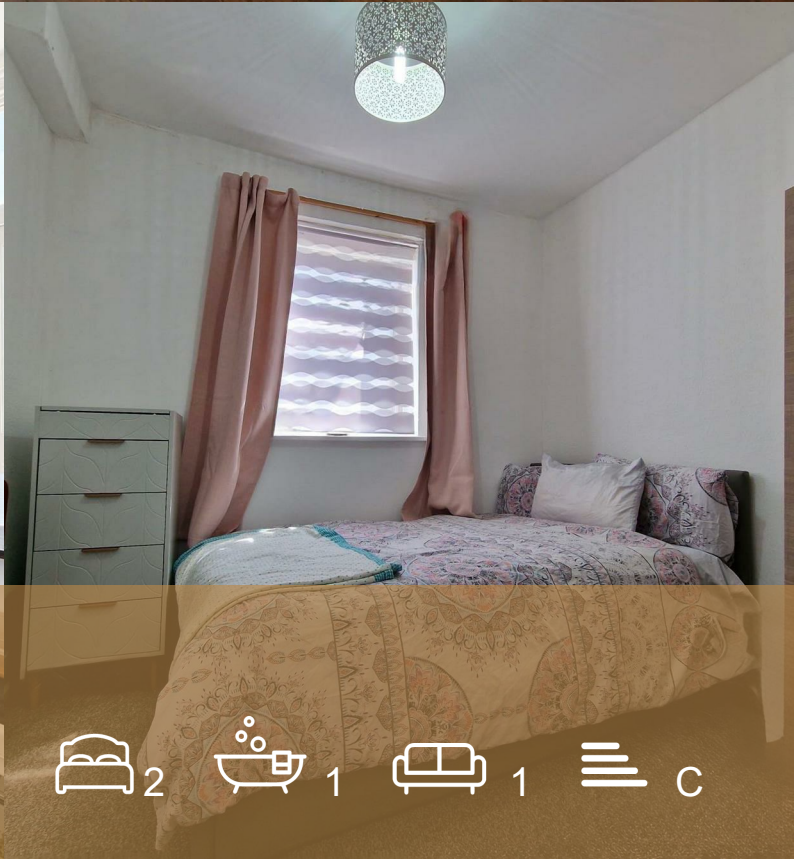




lettingInternational



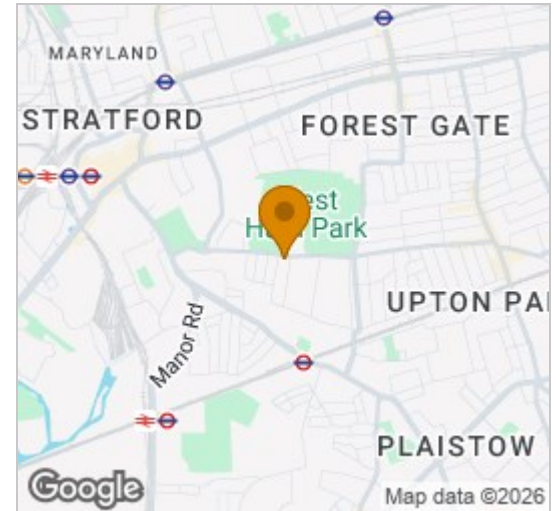
Flat Above, 146A Portway  
, Stratford, E15 3QW  
£325,000

2 1 1 C

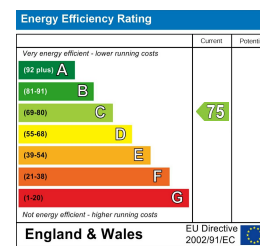
## Floor Plan



## Area Map



## Energy Efficiency Graph



## Viewing

Please contact our Letting International LTD Office on 02085549999 if you wish to arrange a viewing appointment for this property or require further information.



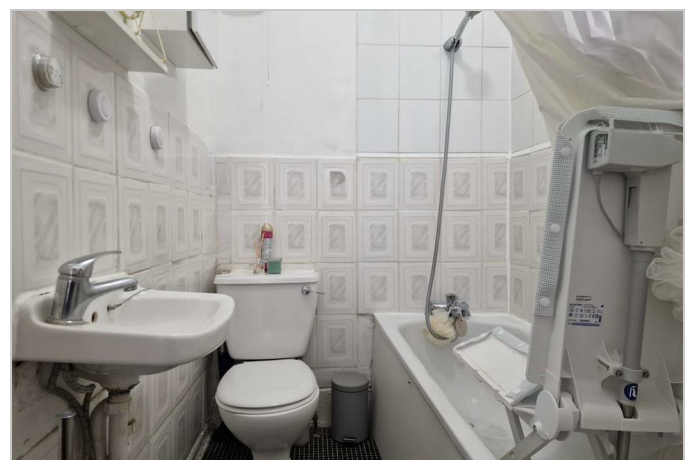
Nestled in the vibrant area of Portway, Stratford, this charming ground floor property offers a delightful living experience. Spanning an impressive 603 square feet, the residence features a well-proportioned reception room that provides a welcoming space for relaxation and entertainment. The property boasts two comfortable bedrooms, perfect for families or those seeking a home office.

The bathroom is conveniently located, ensuring ease of access for all residents. One of the standout features of this property is the lovely garden, which presents an ideal spot for outdoor enjoyment, whether it be for gardening enthusiasts or those who simply wish to bask in the sun.

Situated in close proximity to Stratford Station, this home benefits from excellent transport links, making it an ideal choice for commuters and city dwellers alike. The area is rich in amenities, with shops, restaurants, and parks all within easy reach, enhancing the overall appeal of the location.

Additionally, there is potential to extend the property, subject to planning permission, allowing for future growth and personalisation to suit your needs. This property is not only a wonderful place to live but also presents an opportunity for rental income, making it a savvy investment choice.

In summary, this two-bedroom ground floor property in Portway, Stratford, combines comfort, convenience, and potential, making it a must-see for anyone looking to settle in this thriving area.



These particulars, whilst believed to be accurate are set out as a general outline only for guidance and do not constitute any part of an offer or contract. Intending purchasers should not rely on them as statements of representation of fact, but must satisfy themselves by inspection or otherwise as to their accuracy. No person in this firm's employment has the authority to make or give any representation or warranty in respect of the property.