



## 30A Westminster Way, Botley, Oxford, Oxfordshire, OX2 0LW

£1,450 PCM - 11th April 2026

- One bedroom ground floor apartment
- Gas CH
- Parking for one car
- Mains gas electricity and water
- Unfurnished
- Communal garden
- Council Tax Band B
- Integrated appliances
- Bike shed
- EPC rating C

## 30A Westminster Way, Oxford OX2 0LW

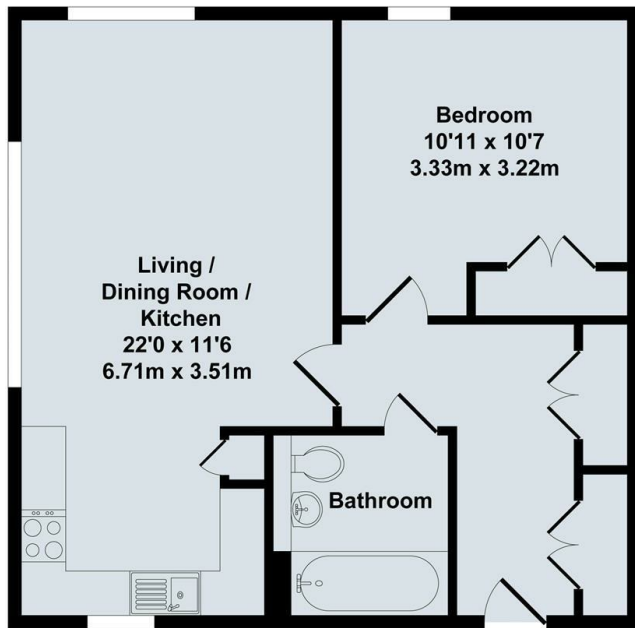
One bedroom ground floor apartment finished to a high standard and available unfurnished. Easy access to Oxford City Centre. Double bedroom with fitted wardrobes, Bathroom with shower over, Open plan style Living/Dining room/Kitchen - fully fitted with oven, gas hob, fridge/freezer and washer/dryer, Doors to terrace, Gas central heating, Communal garden. Parking for one car.



Council Tax Band: B

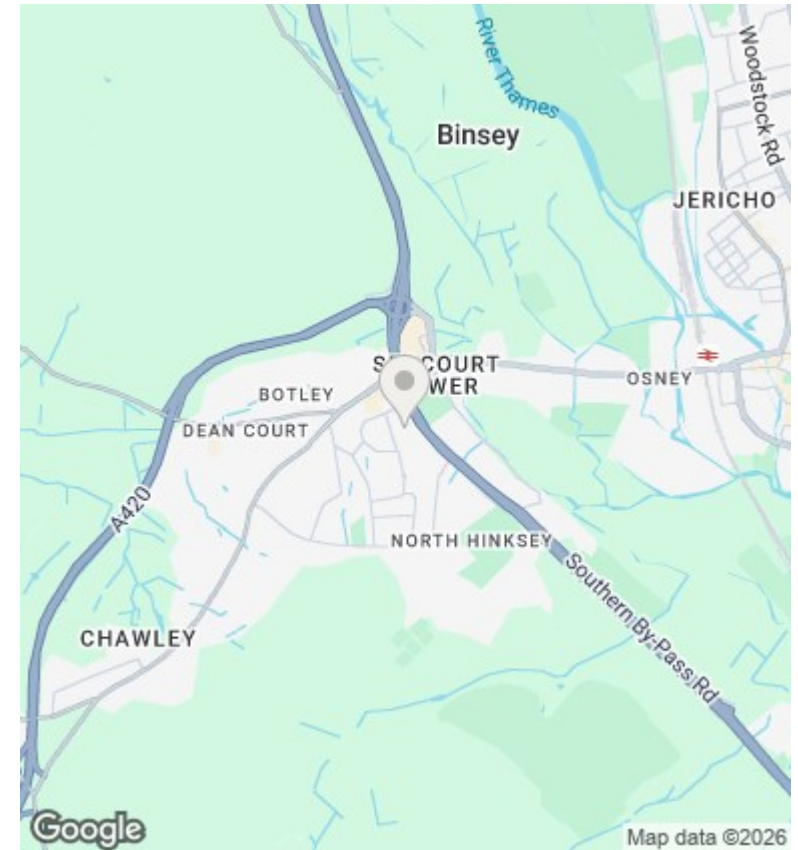






Ground Floor

Total Approx. Floor Area 493 Sq.Ft. (45.80 Sq.M.)  
 All items illustrated on this plan are included in the "Total Approx Floor Area"



Directions

Viewings

Viewings by arrangement only. Call 01865 515900 to make an appointment.

Council Tax Band

B

Energy Efficiency Rating		
	Current	Potential
<i>Very energy efficient - lower running costs</i>		
(92 plus) <b>A</b>		
(81-91) <b>B</b>		
(69-80) <b>C</b>	79	79
(55-68) <b>D</b>		
(39-54) <b>E</b>		
(21-38) <b>F</b>		
(1-20) <b>G</b>		
<i>Not energy efficient - higher running costs</i>		
<b>England &amp; Wales</b>		EU Directive 2002/91/EC