



DRAKEFIELD ROAD, SW17

£2,175,000

- Victorian family home
- Circa 3000 sqft
- South facing garden
- Heaver estate
- Potential to extend
- Energy rating: tbc





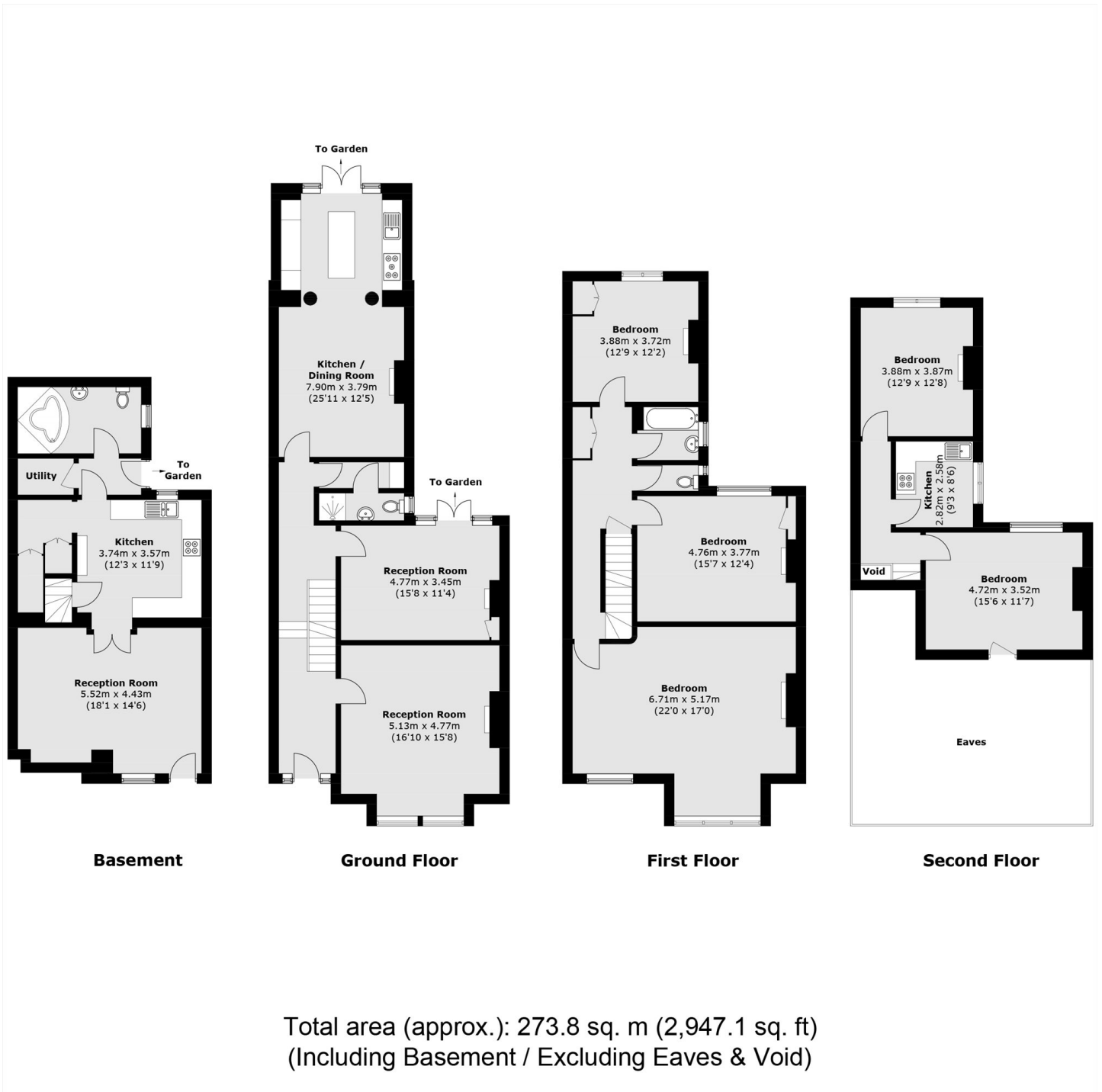
## ABOUT THE HOME

A charming Victorian family home, laid out over four stories and boasting just shy off 3000 sqft of living space. The property has been well maintained by the current owners whilst preserving a wealth of original features and benefits from a mature south facing garden.

Drakfield Road is a popular tree lined road which runs through the heart of the Heaver Estate connecting Tooting Bec Common to Balham High Road. Residents benefit from easy access to an array of local amenities including the shops, bars and restaurants of Tooting Bec, Balham and all that lies between the two. There are a number of outstanding schools in the local vicinity and great transport links into the city via the Northern Line and Southern Rail.






**JACKSONS BALHAM**

8-11 Balham Station Road,  
 London, SW12 9SG  
 Sales: 020 8675 6555  
 Lettings: 020 8675 6565

Energy Rating: We aim to make our particulars both accurate and reliable. However they are not guaranteed; nor do they form part of an offer or contract. If you require clarification on any points then please contact us, especially if you're traveling some distance to view. Please note that appliances and heating systems have not been tested and therefore no warranties can be given as to their good working order.