



Cromwell Road, SW7

£1,200 Per week

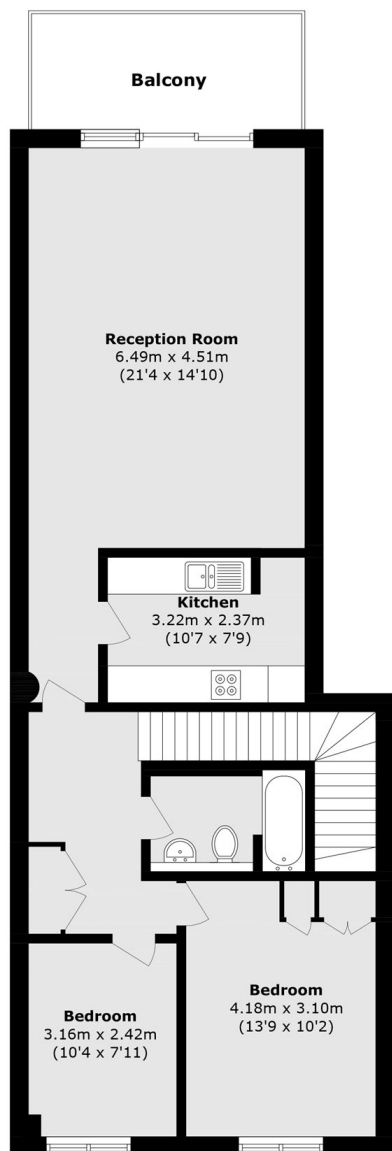
This is one of the three bedrooms split-level apartments located on the ninth floor of Point West. The ninth floor has fifty-six apartments, of which only six benefit from this specific layout.

Point West Apartments are located close to Gloucester Road Underground Station. The building benefits from a David Lloyd gym on the ground floor, and a Sainsbury's supermarket is conveniently situated adjacent to the property.

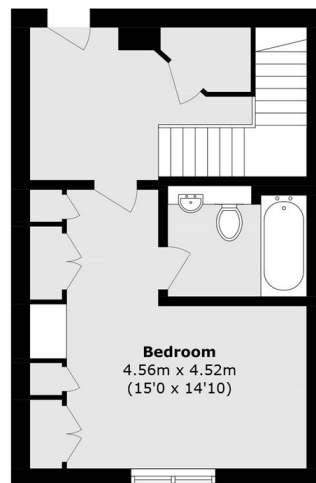
Features

- Point West
- Three Bedrooms
- Two Bathrooms
- Big Living Room
- West Facing
- Balcony

Cromwell Road, London, SW7



Eighth Floor



Ninth Floor

Total area (approx.): 116.4 sq. m (1252.9 sq. ft)
Balcony Total (approx.): 8.7 sq. m (93.6 sq. ft)