



Watton Road, Holbury, Holbury, SO45 2LW

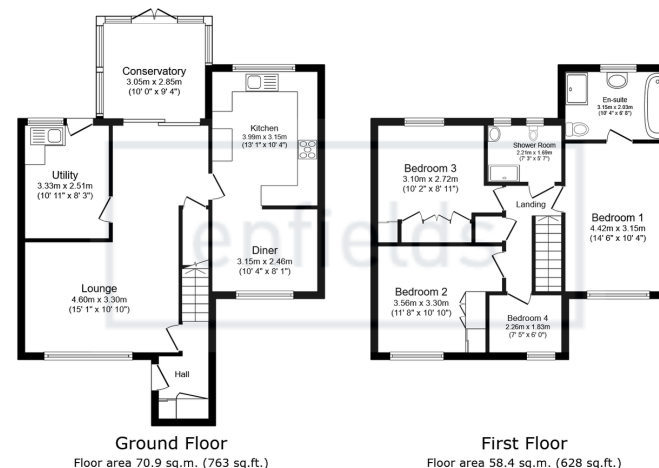
Guide Price £350,000

🛏 4 🚿 2 🛋 3



- Extended Family Home
- Four Bedrooms
- Generous Corner Plot
- Three Reception Rooms
- Solar Panels
- No Forward Chain
- Two Story Side Extension
- En-Suite To Master Bedroom
- Garage And Parking
- Private Gardens





Total floor area: 129.3 sq.m. (1,391 sq.ft.)

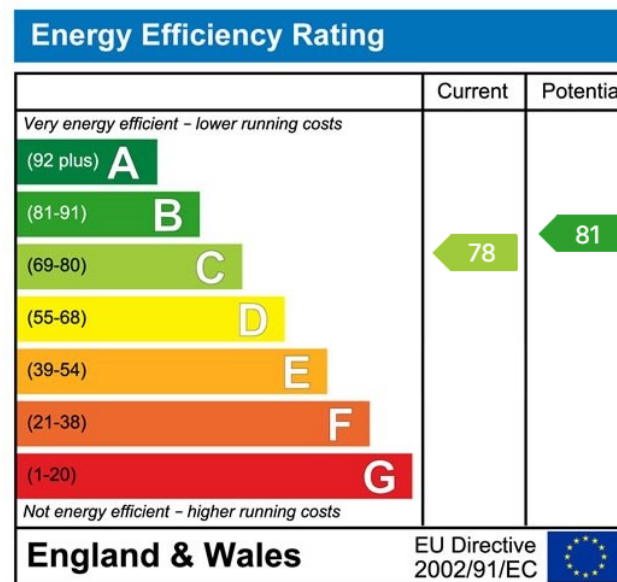
This floor plan is for illustrative purposes only. It is not drawn to scale. Any measurements, floor areas (including any total floor area), openings and orientations are approximate. No details are guaranteed, they cannot be relied upon for any purpose and do not form any part of any agreement. No liability is taken for any error, omission or misstatement. A party must rely upon its own inspection(s). Powered by www.Propertybox.io

enfields

Enfields are pleased to offer to the market this four bedroom end of terrace family home situated in the highly sought after Holbury area and benefits from a generous corner plot, two story extension and no forward chain.

Externally, this property offers enclosed front, side and back gardens with rear access to a garage within a nearby block and an allocated parking space. The ground floor comprises of entrance hall with storage cupboard, spacious living and dining room, additional reception room, modern kitchen, conservatory and a large utility room that previously served as the original kitchen.

Upstairs there are four bedrooms, including three double bedrooms and master bedroom with four-piece en-suite bathroom and an additional shower room.



www.enfields-southampton.co.uk

It is Enfields policy to respect any sole agency currently in force and we would not be able to commence marketing until this has expired or been terminated. If you fail to terminate any previous agreement you could be liable for two sets of fees. Enfields Hythe is a trading name of YTF LTD Registered office: 345 Shirley Road, Southampton, Hampshire, England, SO15 3JD. Company Registration No: 10459987. VAT Registration No: 281 2975 81.

Enfields Lettings - Embley Management LTD T/A Enfields. Registered Address: 345 Shirley Road, Southampton, Hampshire, England, SO15 3JD. Company Registration No: 14847604. VAT Registration No: 439 8546 45.

