



Sinclair Road, W14

£550,000

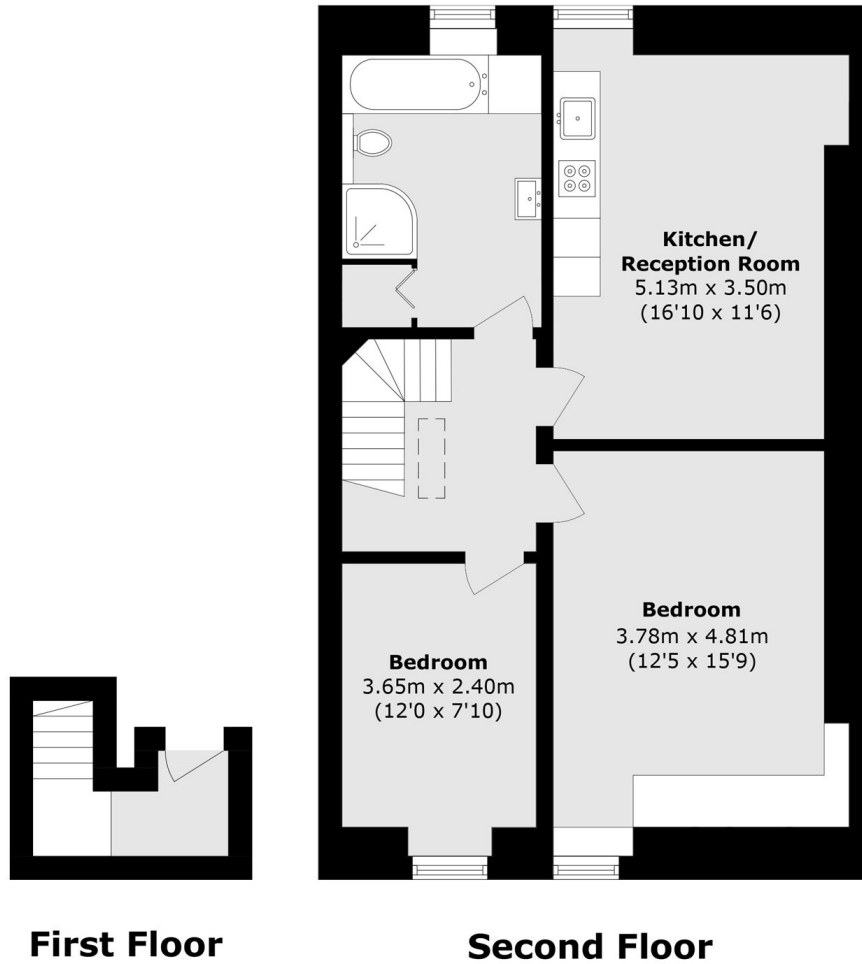
A well-presented top-floor apartment featuring modern interiors, two double bedrooms, a bathroom with separate bath and shower, and a bright open-plan kitchen/living area.

The apartment is ideally situated close to the local amenities of Shepherd's Bush, with excellent transport links from Kensington (Olympia) station, Shepherd's Bush station, and Hammersmith station. The open green spaces of Holland Park are also within easy reach, offering a peaceful retreat.

Features

- Share Of Freehold
- No Onward Chain
- Top Floor
- Two Double Bedrooms
- Kensington Olympia
- Holland Park Greenery's

Sinclair Road, London, W14



Total area (approx.): 71.9 sq. m (773.9 sq. ft)